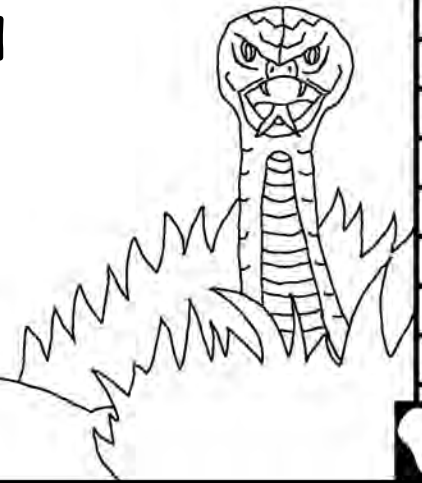


Bibele ya vana Yi mi tisela

Masungulo ya kwatisa hi munhu



Yi tsariwile hi: Edward Hughes
Yi kombisiwile hi: Byron Unger
Alastair Paterson
Yi lunghisiwile hi: M. Maillot; Tammy S.
Hi hundzuluxeriwe hi: christian-translation.com
Yi endliwile hi: Bible for Children
www.M1914.org

BFC
PO Box 3
Winnipeg, MB R3C 2G1
Canada

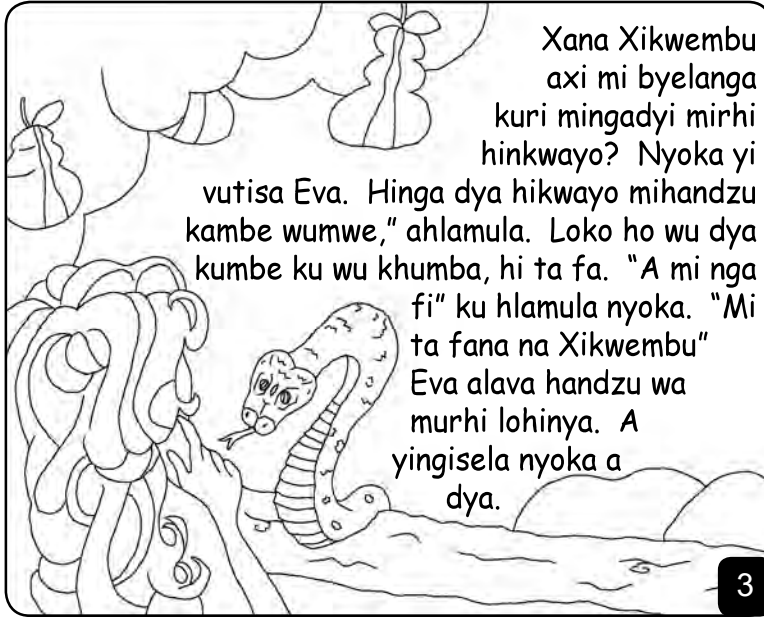
©2021 Bible for Children, Inc.
Layisense: Wa pfumeleriwa ku kopela no printa hungu leri,
kambe a wu pfumelriwi ku ri xavisa.

1

Xikwembu xi endle hinkwaswo!
Loko xi endle munho wo sungula
Adam, utsame a tangeni wa Eden
nsati wakona Eva. Alavi na ntsako
wo hetiseka va yingisela
Xikwembu ni kutipiwa hi
vukana bya xona
kuzaku fika
sikurinwe ...



2



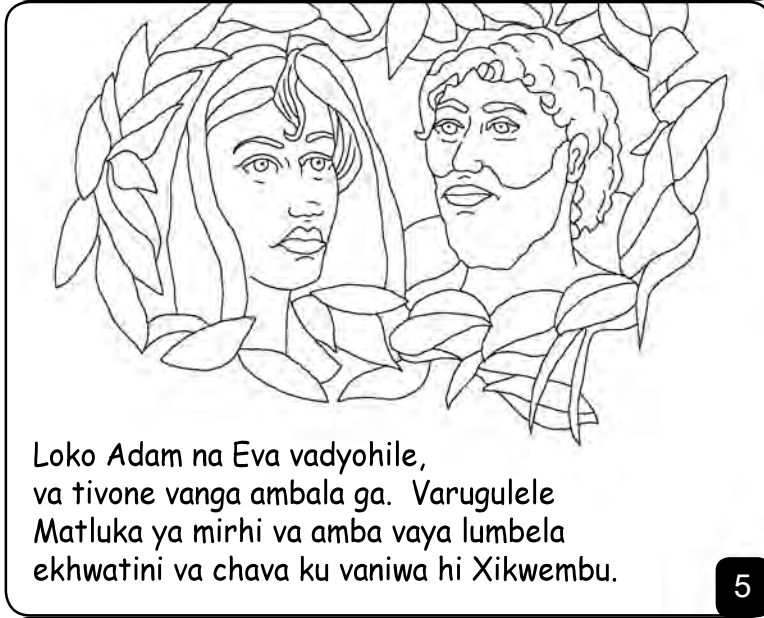
Xana Xikwembu axi mi byelanga kuri mingadyi mirhi hinkwayo? Nyoka yi vutisa Eva. Hinga dya hikwayo mihandzu kambe wumwe," ahlamula. Loko ho wu dya kumbe ku wu khumba, hi ta fa. "A mi nga fi" ku hlamula nyoka. "Mi ta fana na Xikwembu" Eva alava handzu wa murhi lohinya. A yingisela nyoka a dya.

3



A ndzhaku ka loko Eva a tulle nawu wa Xikwembu unyitile na Adam handzu adya na yena. Adam atane a rile "aku anga huli nawu wa Xikwembu."

4



Loko Adam na Eva vadyohile, va tivone vanga ambala ga. Varugulele Matluka ya mirhi va amba vaya lumbela ekhwatini va chava ku vaniwa hi Xikwembu.

5



Loko dyambu ri ya aku peleni Xikwembu xi tile xi tangeni xiswitivile leswi endliweke hi Adam na Eva. Adam a sola Eva. Eva a sola nyoka.

Xikwembu xiku "nyoka yi rhukaniwile, wansati uta ku vava loko a veveka vana." "Adam, hikuva u dyohile, misava yi rhukaniwile hi mitwa na mahlwehlwehleve. U ta tirha u dzuka nyuku ku kuma swakudya swa siku rinwana na ririwana."

6



Xikwembu xi humesa Adam na Eva etangeni loni saseka hikuva va dyohile va hambanyiswe na Xikwembu xa ku nyika vutomi.

7



Xikwembu xi endla langavi ku va humesa. Xikwembu xi endla swi embalo hi madzovo swa Adam na Eva. Xikwembu a xi ya kuma kwini madzovo?

8

Hi nkarhi, adyangu wu va kona ka Adam na Eva mativula ya vona ya mufana kayina. Ari murimi. Jaha ra vona ra vambirhi, Abel ari muvisi. Siku rinwana Kayini anyikelela Xikwembu hi matsavu Abel anyikela hi nyimpfu ya yena leyo hlawuleka.

Xikwembu xitsaka hi mangandelo ya Abel.



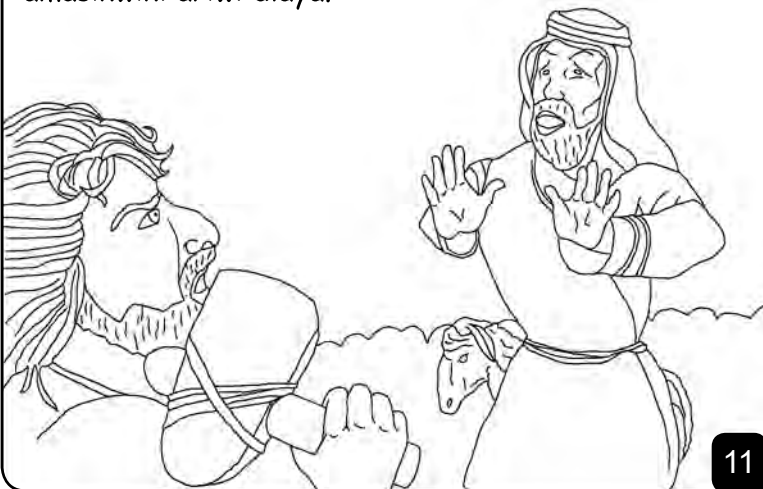
9

Xikwembu axinga tsakanga hi magandzelo ya Kayina. Kayina akwata. Kambe Xikwembu xiku, "Loko wo endla leswa kahle ungaka unga khe nsiwi kee?"



10

Ku kwata ka Kayina aku yanga helo. U Jumile Abel amasinwini ariwi dlaya.



11

Xikwembu xi vulavulena Kayina. "Ukwihhi boti wawena, Abel?" Kayina aku anga tivia hembra, "Xana himina muhla yisi wa boti wa mina kee?" Xikwembu xiba Kayina hiku endla leswaku anga tshoveli chumu a sinwini ya yena Xinwi endla mutsendeleki.



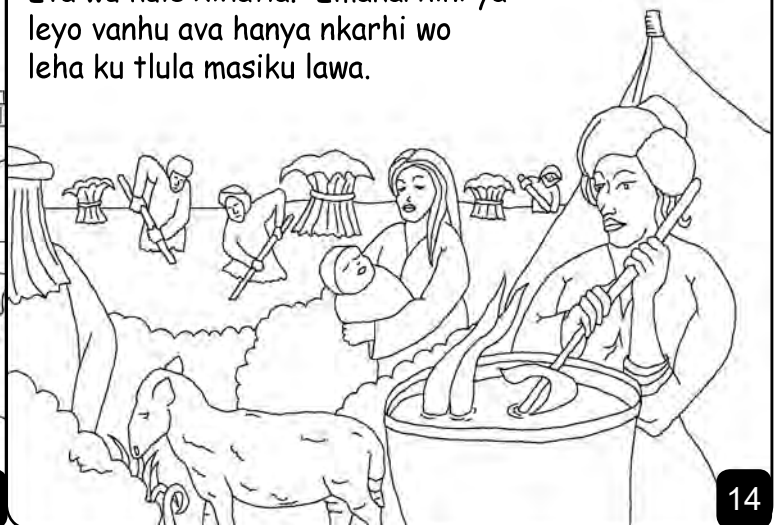
12

Kayina ahamba na vukona bya Xikwembu utekane na nhwana wa Adam na Eva. Vakurise ndyangu. Hi xikarhana nyana vantukulu va Kayisa vatala tsindza lowu awu kumeke.



13

Hihala tlhelo, ngangu wa Adam na Eva wu kule xihatla. Emakarhini ya leyo vanhu ava hanya nkarhi wo leha ku tlula masiku lawa.



14

Loko hwana wa yena wa jaha a velekiwile, Eva aku, "Xikwembu ndzi nyike Sethi a ta siva Abel." Sethi ari nwana waxikwembu loyi anga hanya 912 wa malembe athela ava na vana vo tala.



15

A misaveni, vanhu va ve va nyanya kuva valoyi tani hi loko rixaka riya risiyerisana. A ku heteleleni Xikwe xi kungulota ku herisa vanho na Swiharhi na hinyenyena hinkwato. Xikwembu axi tisola kuva xi endle vanhu.



Kambe munhu unwe a tsakisa Xikwembu ...

16

Wanuna loyi akuri Nowa wa rixaka ra Sethi, Nowa a lulamile athela anga sorisi ufambe na Xikwembu. U dyondzisile na vana vakwe va nharhu vamendza ku yingisela Xikwembu. Hil'oko Xikwembu xikunguhata



ku tirhisa Nowa hi ndlela yo hlamarisa swinene.

17

Masungulo ya kwatisa hi munhu

Hungu leri humaka eka rito ra Xikwembu, Bibe, ri kumeka eka
Geneses 3-6

"Ku ngena ka marito ya wena ku nyika kuvonakala." Pisalema 119:130

18

Makumu

2



60

19

Bibe ye hi byela hungu ra Xikwembu xa hina xa ku hlamarisa lexi hi vumbeke xi tlhela xi lava leswaku hi xi tiva.

Xikwembu xa swi tiva leswaku hi endlile swilo swo biha, leswi xi swi vulaka xidyoho. Hakelo ya xidyoho i rifu, kambe Xikwembu xi ku rhandzile swonghasi xi rhumile n'wana wa xona a ri yexe, Yesu, leswaku a ta fa e xihambanweni a hakela swidyoho swa wena. Yesu u tlherile a pfuka ekufeni a ya ekaya etilweni! Loko u pfumela eka Yesu u tlhela u kombela ku rivaleriwa swidyoho, u ta swi endlal! U ta ta eka wena a ta hanya kona sweswi, kutani u ta hanya na yena hi laha ku nga heriki.

Loko u pfumela leswaku leswi i ntiyiso, vula leswi eka Xikwembu: Eka Yesu, na pfumela leswaku u Xikwembu, u hundzuke munhu leswaku u ta fela swidyoho swa mina, sweswi wa hanya nakambe. Nghena evuton'wini bya mina u ndzi rivalela swidyoho swa mina, leswaku ndzi ta va na vutomi lebyi ntshwa sweswi, siku rinwani ndzi ta tshama na wena hi laha ku nga heriki. Ndzi pfuni ku ku landzela na ku hanyela wena tani hi n'wana wa wena. Amen.

Hlaya Bibe u vulavula na Xikwembu hi masiku hinkwawo!
Yohana 3:16

20