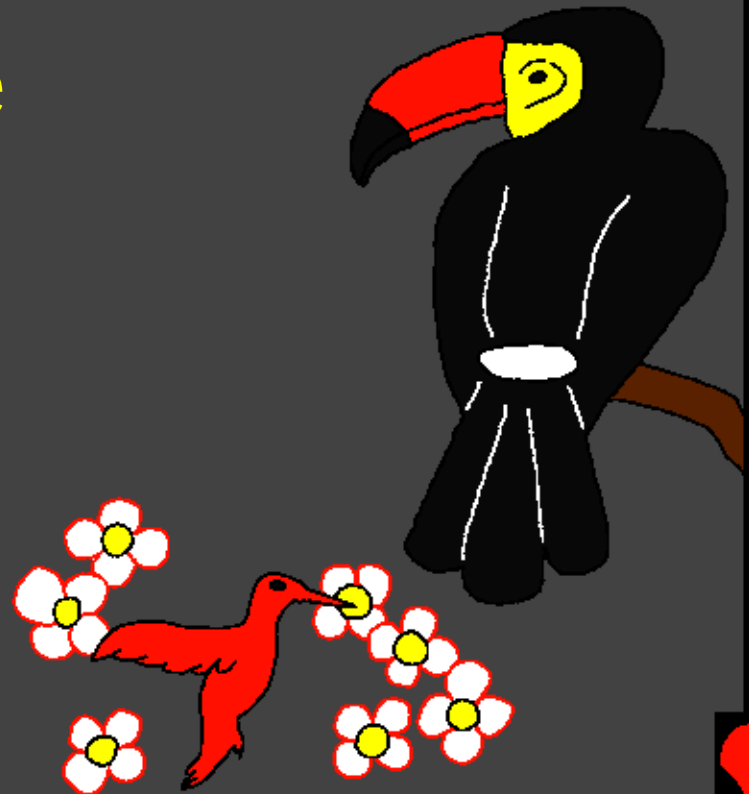
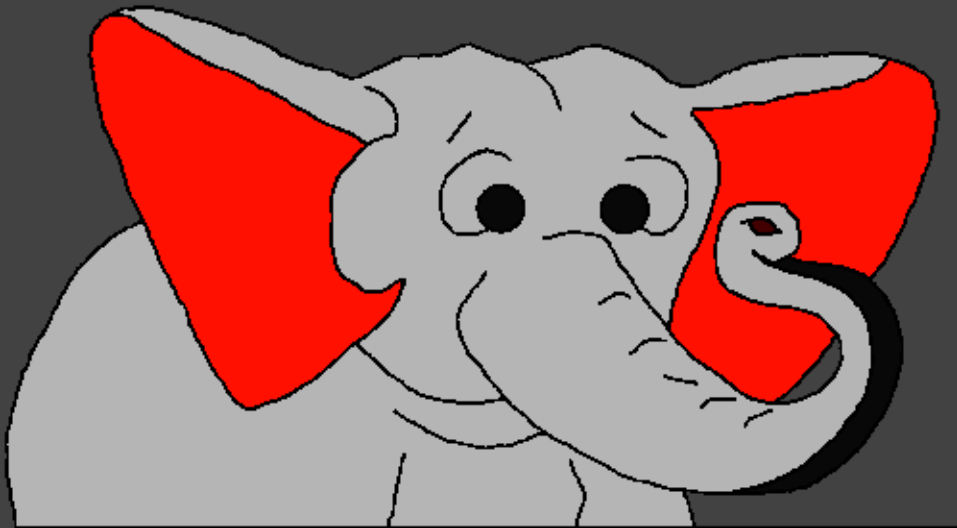


# Bivhili ya Vhana

## Yo Nekedza

Musi Mudzimu a tshi  
sika zwothe



**Yo Nwaliwa Nga: Edward Hughes**

**Yo Faniselwa Nga: Byron Unger; Lazarus  
Alastair Paterson**

**Yo Tendelana Nga: Bob Davies; Tammy S.**

**Talutshedzelwa Nga: [christian-translation.com](http://christian-translation.com)**

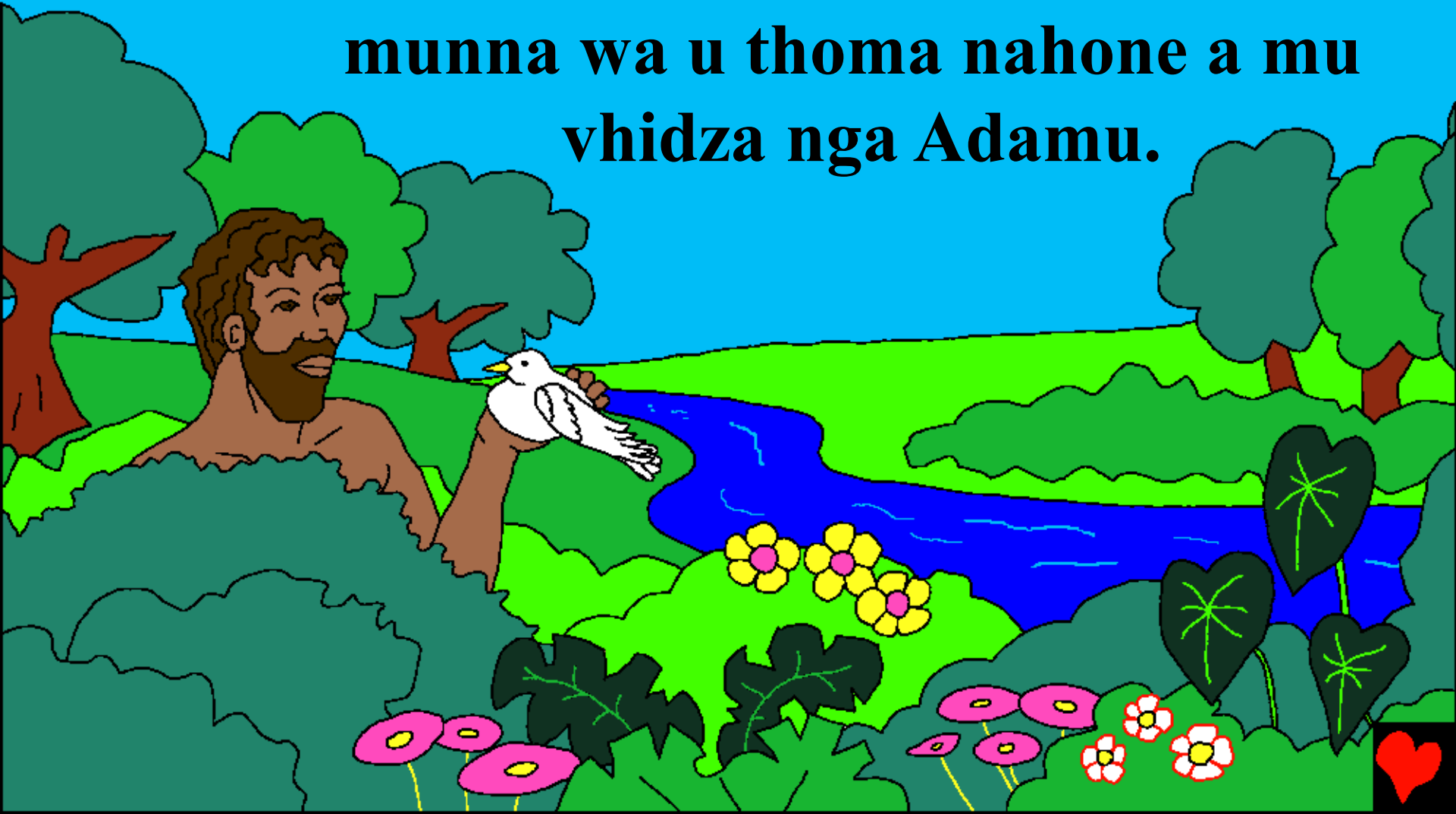
**Yo Bveledzwaho Nga: Bible for Children  
[www.M1914.org](http://www.M1914.org)**

**©2020 Bible for Children, Inc.**

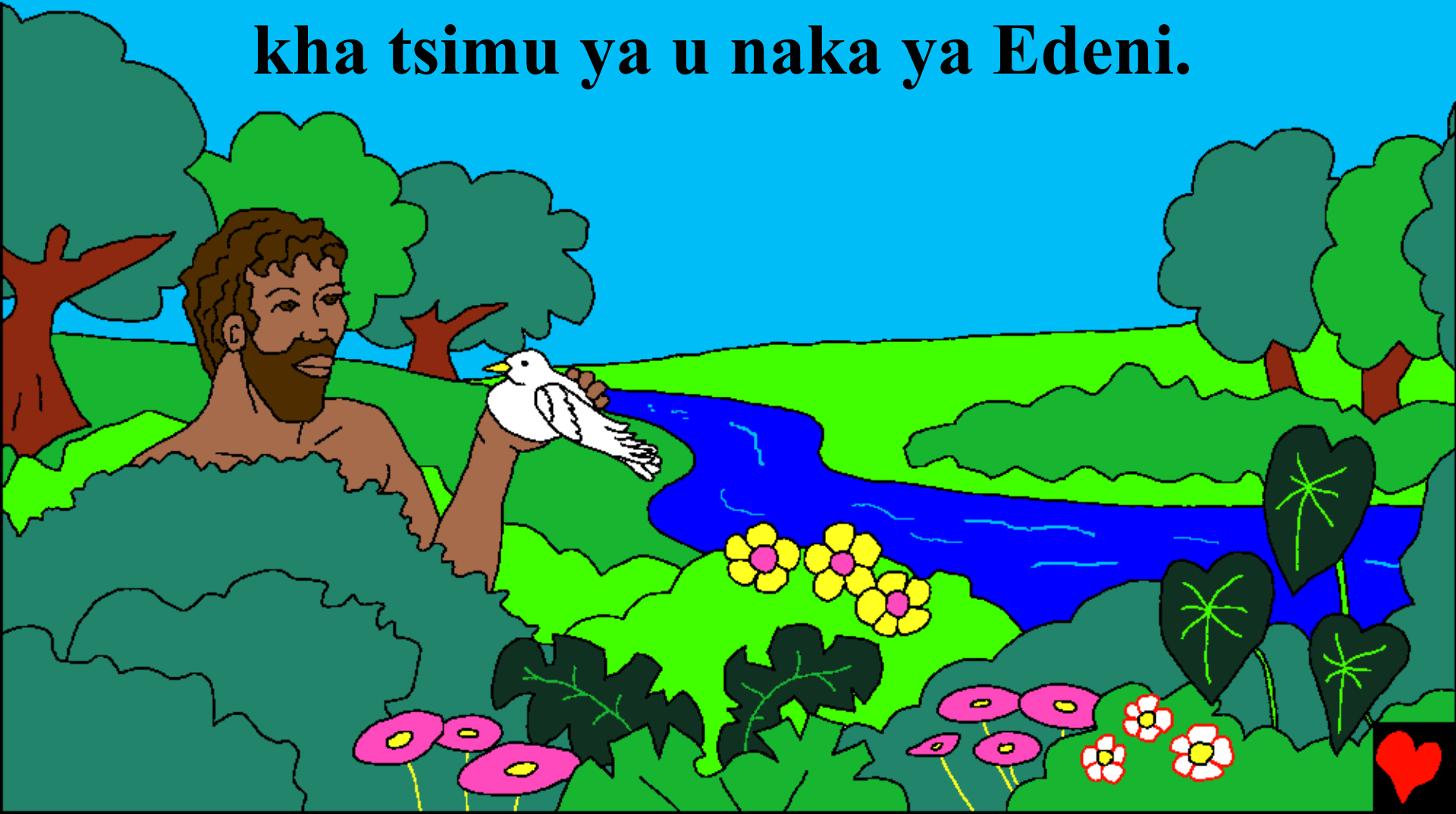
**Laisentse: ni na ndugelo ya u kopa kana u gandisa heyi nganea,  
musi ni tsha iti bindula nga yone.**



**Rine ra sika ane? Bivhili, Ipfi la Mudzimu,  
li khou amba uri vhathu vothe vha khou  
thoma hani. Kale, Mudzimu u khou sika  
munna wa u thoma nahone a mu  
vhidza nga Adamu.**



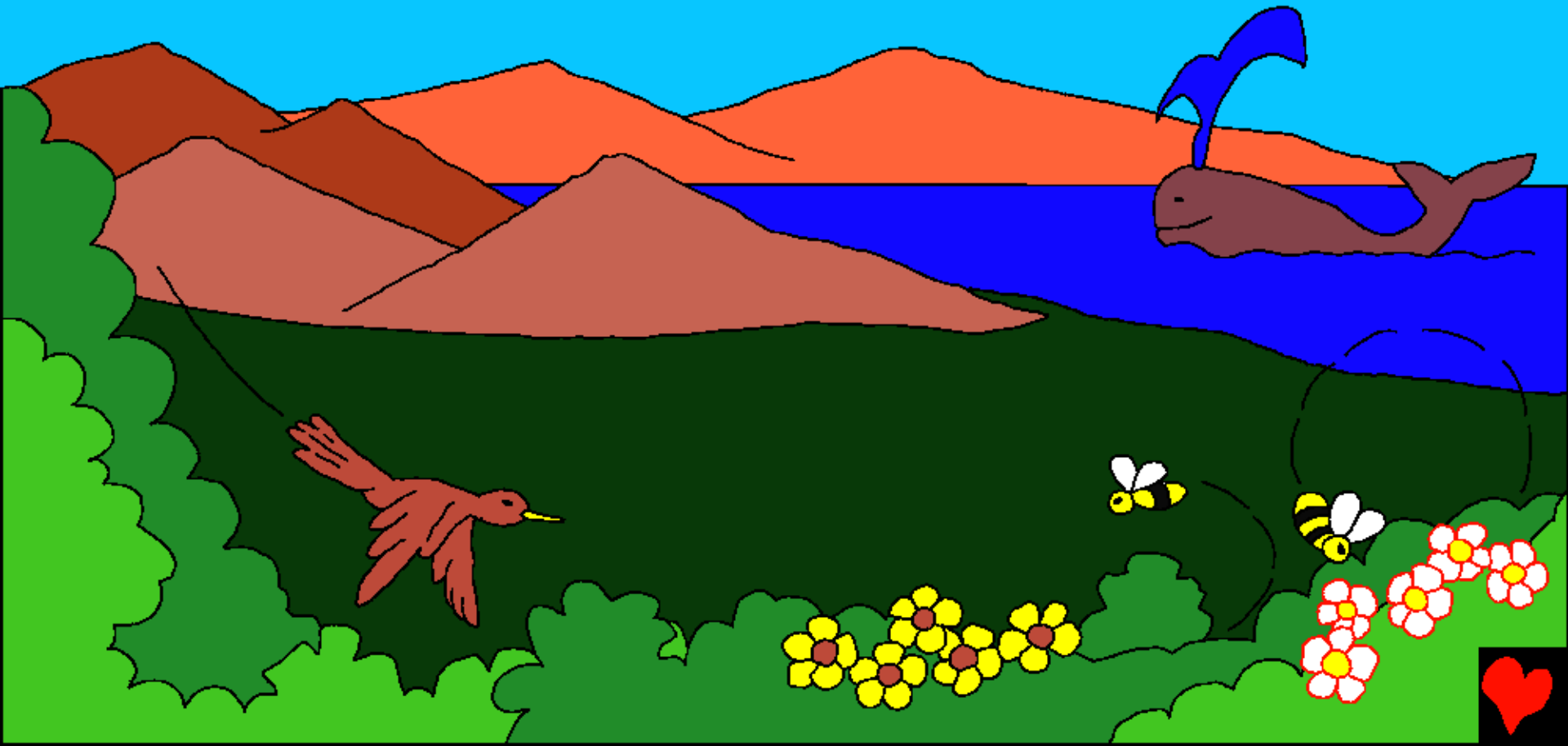
**Mudzimu u khou sika Adamu a tshi shumisa  
buse. Musi Mudzimu a vhudzulela mufemo  
kha Adamu, a khou tshila. A diwana a tshi  
kha tsimu ya u naka ya Edeni.**



**Sa athu Mudzimu o sika Adamu, Wa sika shango la u vha na zwito zwa u naka. Nga zwiṱuku nga zwituku Mudzimu o sika mivhundu, tshikhalani, maluvha a nukhelelaho na miri milapfu, ...**



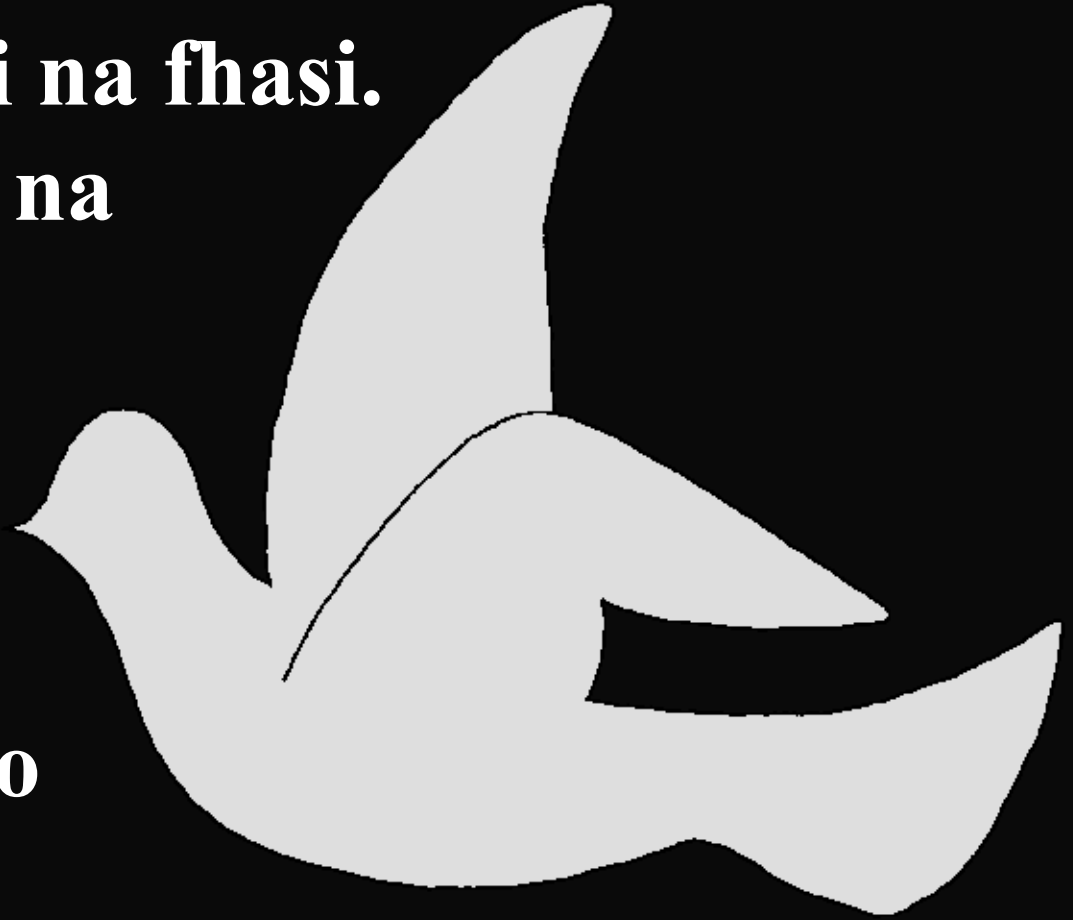
**... tshinoni dza mathenga a mivhala o naka  
na dzinotshi, khovhe khulwane na  
khumba. Zwi re zwone ndi uri, Mudzimu  
o sika zwothe zwi nga vha hone – zwothe.**



**U rangani, sa athu Mudzimu  
o sika tshithu, ho vha hu si  
na tshithu nnḁa ha  
Mudzimu. Hu si na  
vhathu kana  
fhethu kana  
zwito. Tshithu.**



**Hu si na tshedza na swiswi.  
Hu sin a n̄tha hu si na fhasi.  
Hu si na mulovha na  
matshelo. Hu vhe  
hu na Mudzimu  
fhedzi We a  
vhe a sin a  
mathomo. Zwenezo  
Mudzimu a ita!**

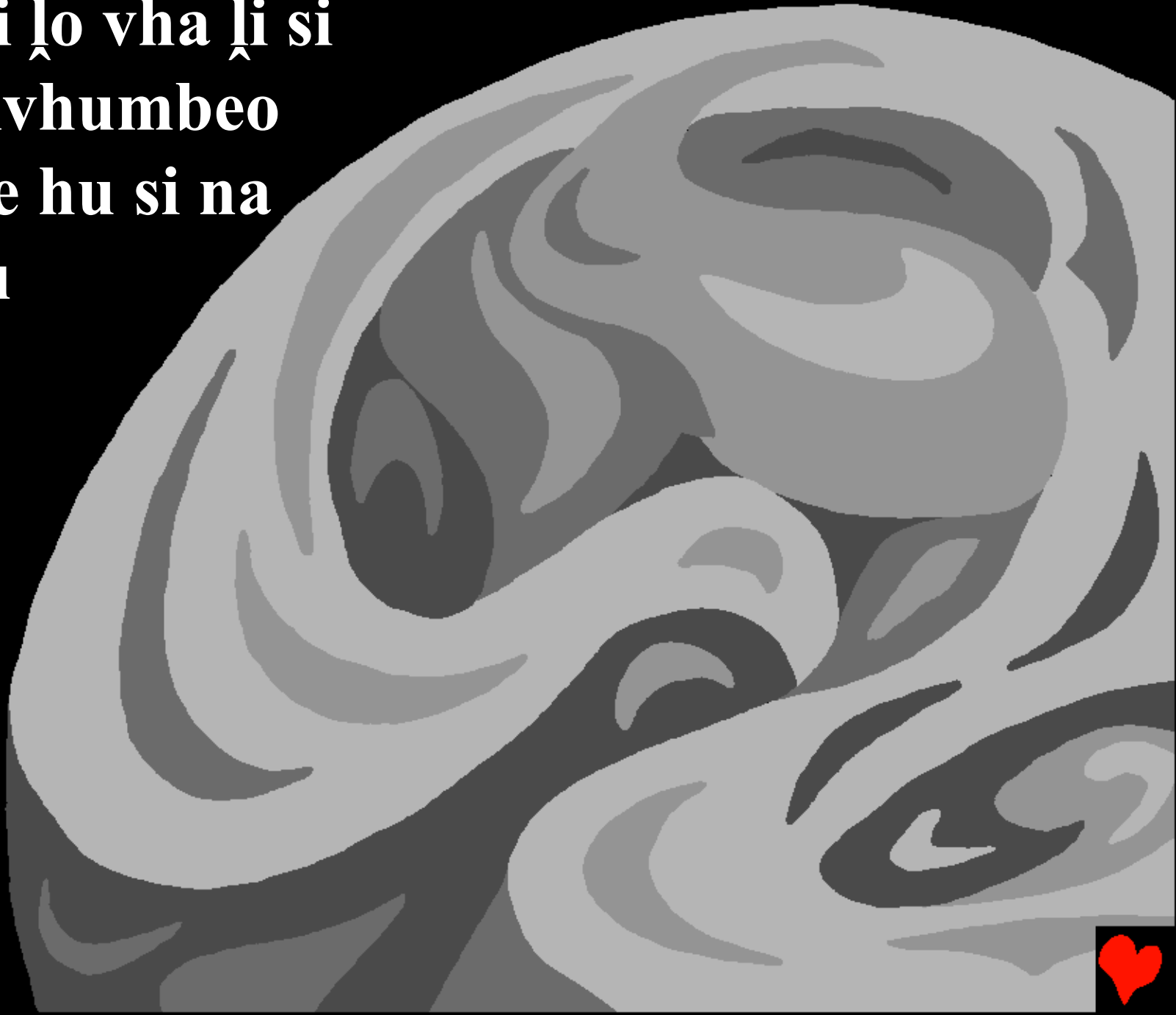




**U rangani Mudzimu o sika  
ḷiṭadulu na ḷifhasi.**



**Ḳifhasi Ḳo vha Ḳi si  
na tshivhumbeo  
nahone hu si na  
tshithu  
khaḲo.**



**Ho vha hu na swiswi.**

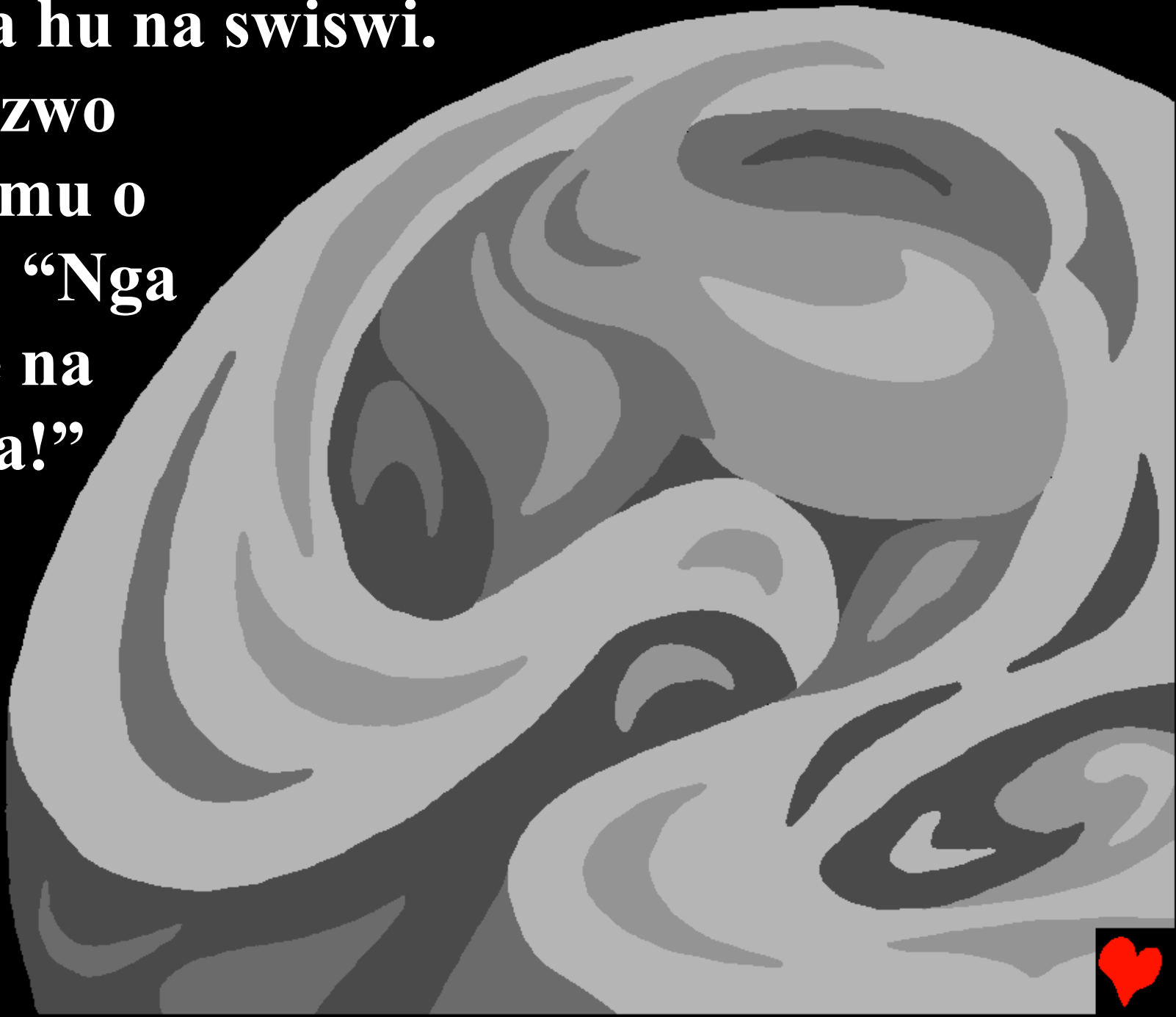
**Zwenezwo**

**Mudzimu o**

**amba. “Nga**

**hu vhe na**

**tshedza!”**



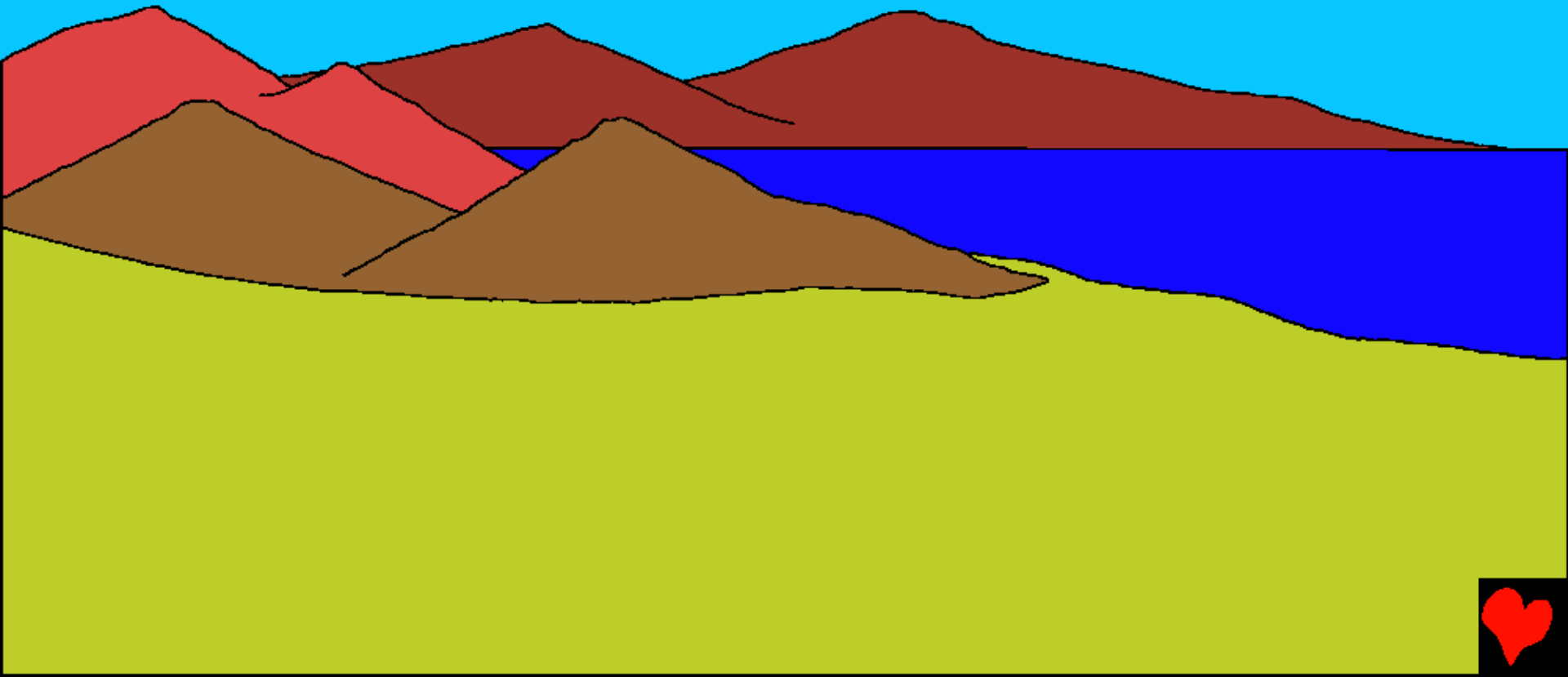
**Tshedza tsha mbo di vha hone. Mudzimu a  
sedza a vhona tshedza tshi tshavhudi, a  
fhandekanya tshedza na swiswi.**



**Tshedza Mudzimu a ri tshi pfi masiari,  
swiswi a ri li pfi vhusiku. La kovhela, la  
tsha, la vha duvha la u ranga.**



**Nga duvha la vhuvhili, Mudzimu a disa  
madi a madanzhe na dzivhani nga ndila yo  
dzudzanyeaho nga fhasi ha Litadulu. Nga  
duvha la vhuraru, Mudzimu a ri, “Lo  
omaho li vhonale.” Nahone zwa itea.**



**Mudzimu nahone o laedza mahatsi na  
maluvha na tshiri na miri  
uri di bvelele.**



**Nahone zwo bvelela.  
La kovhela, la tsha, la vha  
duvha la vhuraru.**





Zwenezwo Mudzimu a ita duvha,  
na nwedzi, na naledzi zwinzhi  
uri a hu na muthu ane a  
nga dzi vhala. La kovhela,  
la tsha, la vha  
duvha la vhuna.



Zwivhumbiwa zwa  
lwanzheni na  
zwickhovhe na  
zwiṅoni wi vhe zwi  
tevhela kha mutevhe  
wa Mudzimo.

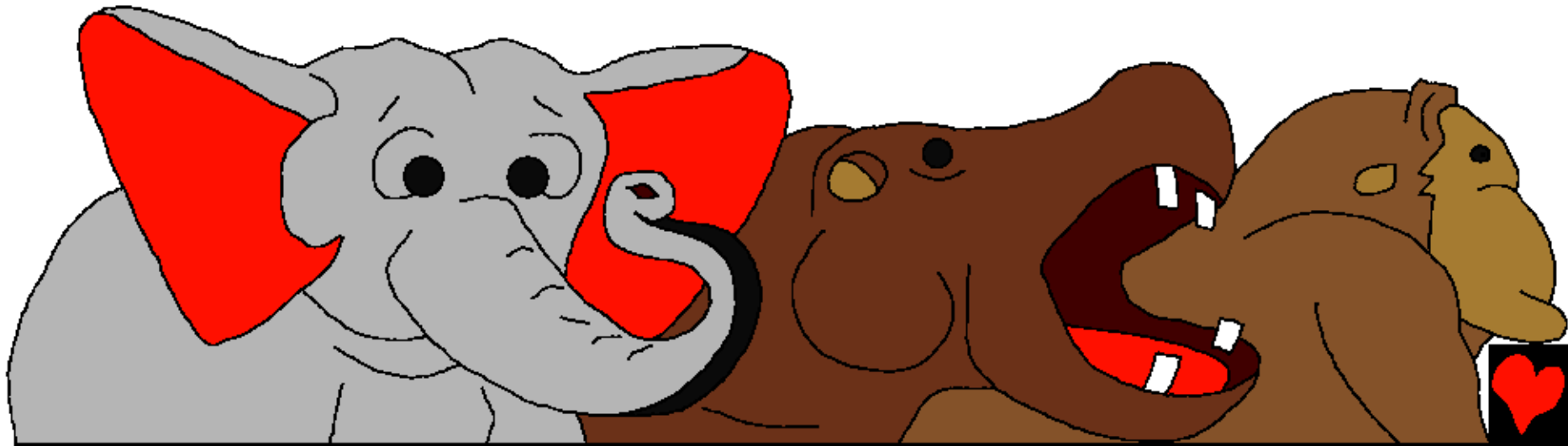


**Nga duvha la vhutano  
la Wo ita zwickhovhe  
khulwane na thukhu,  
mphwe tsha milenzhe  
milapfu na zwinoni  
zwa mivhala.**

**Mudzimu Wo sika  
zwivhumba ledzi uri  
dzi dadze shango. La  
kovhela, la tsha, la vha  
duvha la vhutano.**



**Nga murahu ha zwine, Mudzimo o amba dovha. A ri, “Lifhasi nga li vhe na zwisikwa zwi tshilaho zwi tshi ya nga tshakha dzazwo...” mifuda yothe ya zwipuka na zwikhokhonono na zwikokovhi zwa vha hone. Ho vha hu na ndou hedzi khulukhulu na mahondo.**



**Mapfene a mikhwa i sa divhalei na ngweṅa  
he dzi si na vhulondi. Zwivhungu na  
dzithudwa na zwimange. Mifuda yothe ya  
zwipuka yo sika hi Mudzimu misi iyo.**

**La kovhela, la tsha, la vha duvha la  
vhutanu na vhuthihi.**



**Mudzimu wa ita tshiñwe tshithu nga duvha  
la vhu vhutanu na vhuthihi - zwithu zwo  
khetheaho vhukuma. zwithu zwothe I vhe  
zwi khou lugela Muthu.  
Ho vha hu na zwiliwa  
kha tsimu na zwipuka  
u mu shumela.**



**Mudzimu a ri, “ga ri vhumbe muthu ri tshi difanyisa, a fane na rine, a vhuse khovhe dza lwanzheni, na zwinoni, na zwifuwo, na lifhasi lothe, na zwipuka zwothe zwi kokovhaho mavuni.” MUDZIMU A VHUMBA MUTHU A TSHI DIFANYISA; O MU VHUMBA A TSHI FANA NA MUDZIMU...**



**Mudzimu wa amba  
na Adamu. “U nga  
di la muri munwe  
na munwe afho  
tsimuni, hone muri  
u neaho thalukanyo  
ya zwivhuya na  
zwivhi u songo u la;  
wa vhuya wa u la,  
vhukuma u do fa.”**





**Muṅe washu Mudzimu a ri, “A si zwavhudi muthu a tshi dzula e ethe. Ndi do mu vhumbela mufarisi o mu fanelaho.” Muue washu Mudzimu a dzhia mavu a vhumba phukha dza shango na zwinoni, a zwi disa ha muthu u vhona uri a nga zwi vhidza hani.**



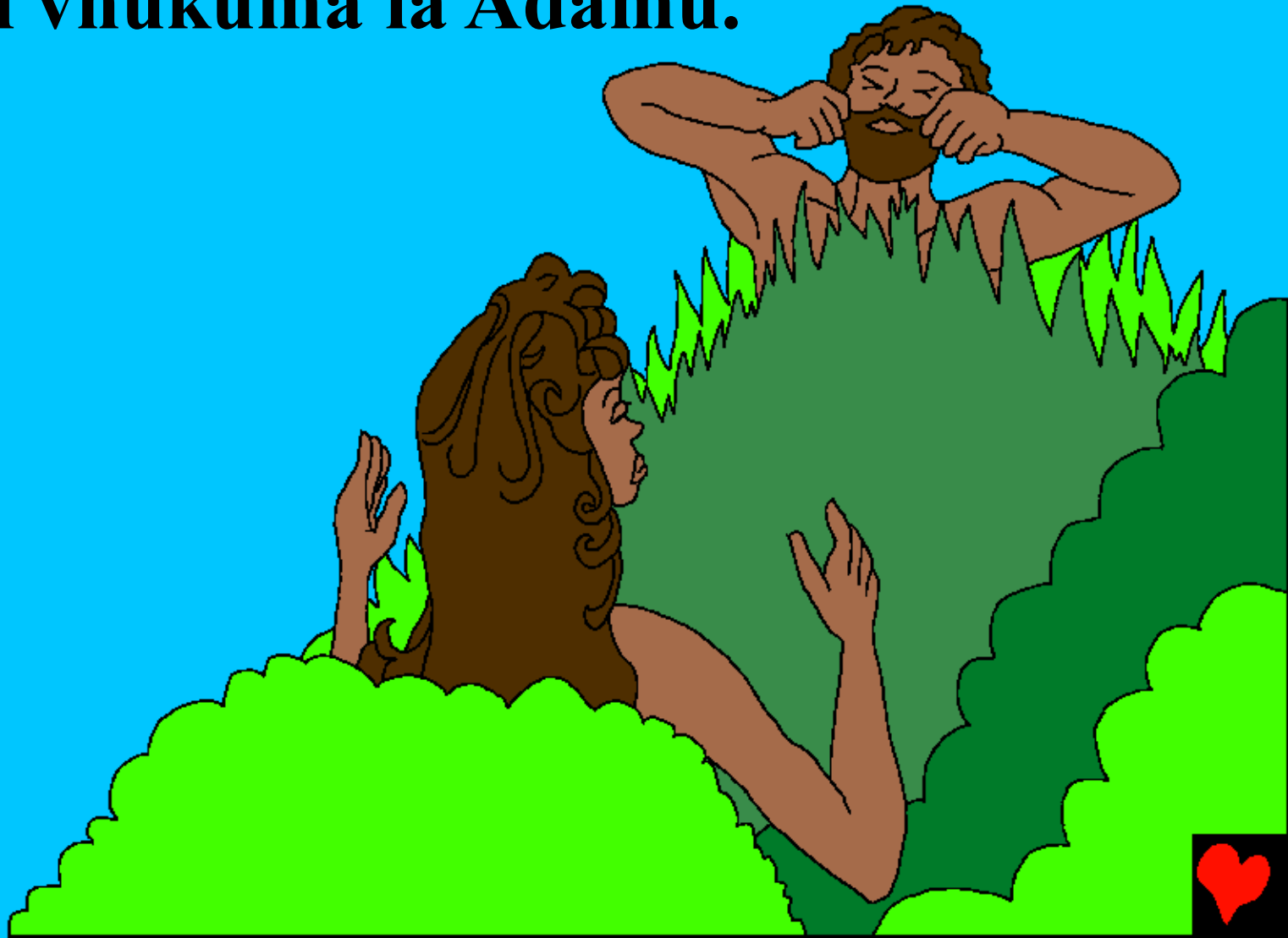
**A nga vha o vha a tshi khou thanya nga  
maanda uri a kone u zwi ita zwenezwo.  
Huno muthu o rina madzina  
a zwifuwo, na zwinoni, na  
phukha dzothe dza shango,  
hone a si wane mufarisi o  
mu fanelaho.**



**Mudzimu a ededza Adamu khofhe khulu.  
A tshi bvisa luvhabvu lwawe musi a tshee  
o edela, Mudzimu a vhumba  
musadzi nga luvhabvu  
lwe a lu bvisa  
kha Adamu.**



**Heyi musadzi hoyi Mudzimu  
a kou mu sika ndi shaka  
lavhudhi vhukuma la Adamu.**



**Mudzimu o fhedza mushumo wawe  
wothe wa u sika Mudzimu a ri duvha  
la vhutanu na vhuvhili li vhe na  
mashudu li vhe likhethwa nge  
a awela ngalo.**



**Kha tsimu ya Edeni, Adamu na Eva  
musadzi wawe vha vhe vha ni dakalo  
vha tshi thetshesela Mudzimu.  
Mudzimu a vha a MURENA  
wavho, Munei wavho  
na Khonani yavho.**



**Musi Mudzimu a tshi sika zwothe**

**Nganea ha Ipfini la Mudzimu, Bivhili**

**tshi wana kha**

**Genesi 1-2**

**“U dzhena ha Iphi Lwawu hu a fhatusa.”**

**Dziphisalema 119:130**



**Vhufhelo**





Heyi nganea ya Bivhili I khou ri vhudza nga  
Mudzimu washu wavhudi we a ri kondela na we a  
toda uri ri Mu divhe.

Mudzimu wo tshi divha uri ri khou ita zwa zwivhi,  
zwe akhou zwi amba uri ndi tshivhi. Mvelelo ya  
tshivhi hu lufu, fhedzi Mudzimu o khou ni funa  
shango zwingafha-ngafha, a vhuya a nekedza  
Murwa wawe ethe uri a fe kha tshifhambano na  
uri a tarafiwelwe zwivhi zwau. Nga zwenezo Yesu  
a vuwa nahone a ya hayani kha Tadulu! Arali ni  
khou tenda kha Yesu nahone ni Mu humbele uri a  
ni hangwele zwivhi zwahu, U do zwi ita! U do da a  
khou dzula ngomu kha inwi, nahone ni khou dzula  
Nae nga hu sa fheli.



**Arali ni tshi tenda uri heyi ndi yone ngoho,  
amba zwenezo kha Mudzimo:**

**Yesu Ane Nda Mufuna, ndi khou tenda uri  
Mudzimu ndi lwe, nahone o no vha muthu uri U  
khou fela zwivhi zwanga, nahone zwino Ni khou  
Tshila. Dzena kha vhutshiloni vhangana nahone U  
ndi hangwele zwivhi zwanga, uri ndi khou vha na  
vhutshilo vhuswa zwino, nahone ndi to vha na Lwe  
nga hu sa fheli. Nthuse uri ndi kone u Ni  
thetshelesa ndi tshile ufana na nwana Wanu.**

**Vhalani Bivhili nahone ni ambe na Mudzimu  
duvha linwe na linwe! Yohane 3:16**

