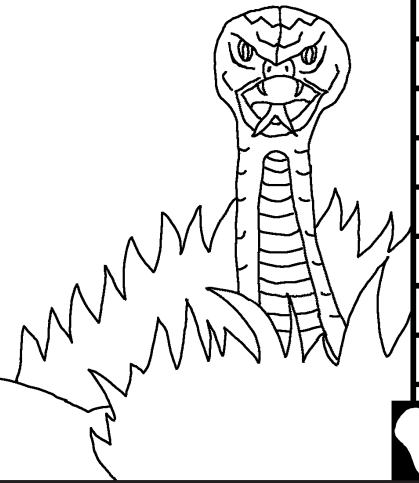


# Baibulo ja Wanache Jikumpela

## Kutanda kwa yisawusyo ya mundu



Jakulembegwa ni: Edward Hughes  
Jakwambulaga ni: Byron U.; Lazarus; Alastair P.  
Jajitichidwe ni: M. Maillot; Tammy S.  
Jagopolelaga ni: Phiri Williams  
Japanganisigwe ni: Bible for Children  
[www.M1914.org](http://www.M1914.org)

BFC  
PO Box 3  
Winnipeg, MB R3C 2G1  
Canada

©2021 Bible for Children, Inc.  
Chikundisyo: Mkwete wukoto wa kulemba kapena  
kwambula ndanoji nambo ngasumisya.

1

MLUNGU WAPANGANYISYE  
CHINE CHILICHOSOPE! Apo  
Mlungu piwapanganyisye mundu  
jwandanda, Adamu, jwalakwe  
watamaga mu mgunda wa Edeni ni

wamkwakwe, Hawa. Waliji  
wakusengwa ni kusimangana kwa  
Mlungu pasikati  
pawo mpaka  
lisiku line ...



2



"Ana Mlungu wamsalile kuti mkalya kutyochela kuyitela yosope?" Lijoka lyamuwusisye Hawa. "Tukomboleka kulya isogosi yosope nambo chimo," wajanjile yoyo. "Naga tukulya kepan kwaya chele chisogosicho, tuchiwa." "Ngasimwa," lijoka lyasisisye.

3



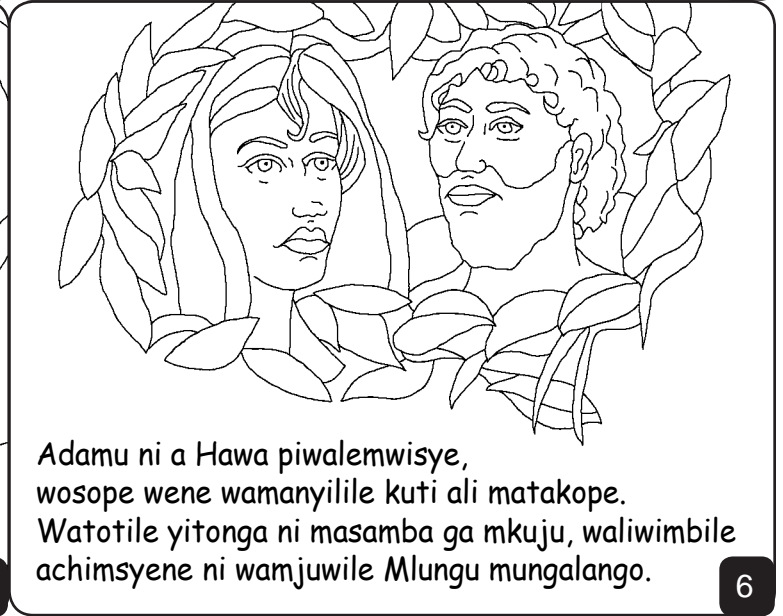
"Jemanja timchiwa mpela Mlungu." Hawa walakalache yisogosi yamchitelachi. Wajipikanile lijoka lila ni walile chisogosicho.

4



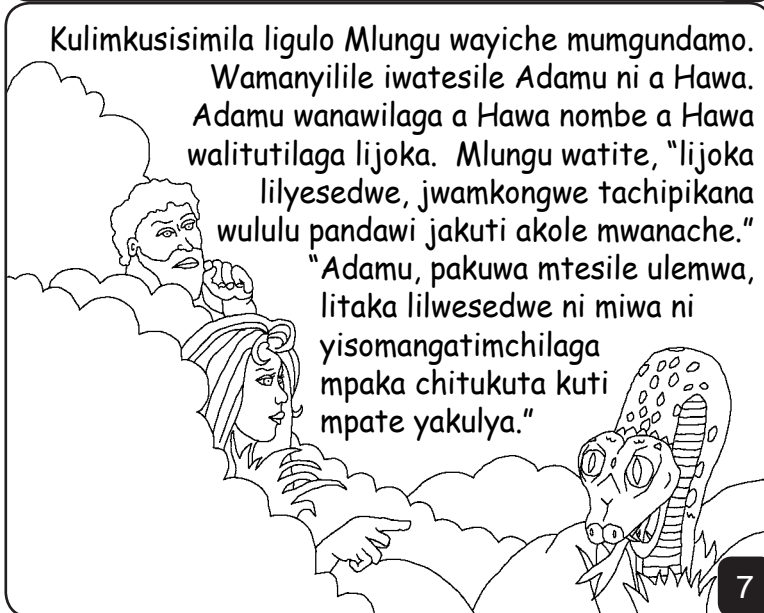
A Hawa piwatesile wungampikanila Mlungu watendekasisye Adamu kulya nombe nawo chisogosicho. Adamu akatite, "Yiyayi! Une ngindeka kumpikanila Mlungu."

5



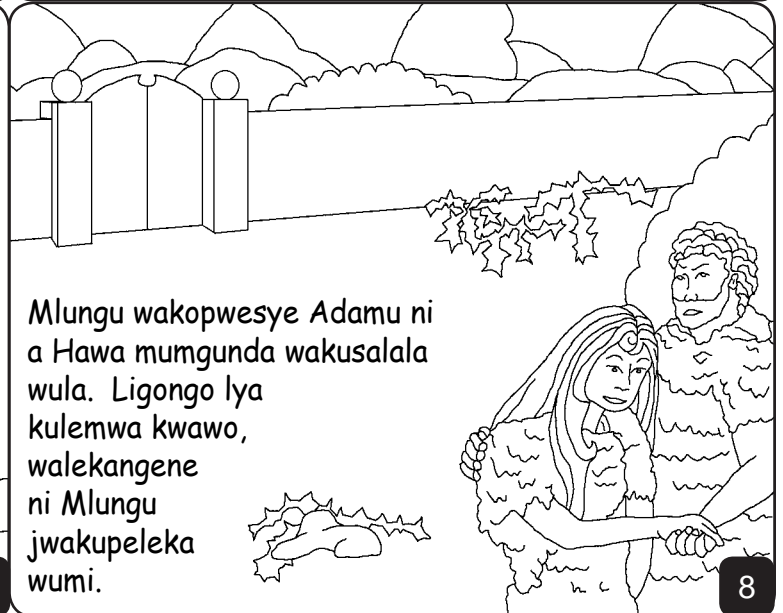
Adamu ni a Hawa piwalemwisye, wosope wene wamanyilile kuti ali matakope. Watotile yitonga ni masamba ga mkuju, waliwimbile achimsyene ni wamjuwile Mlungu mungalango.

6



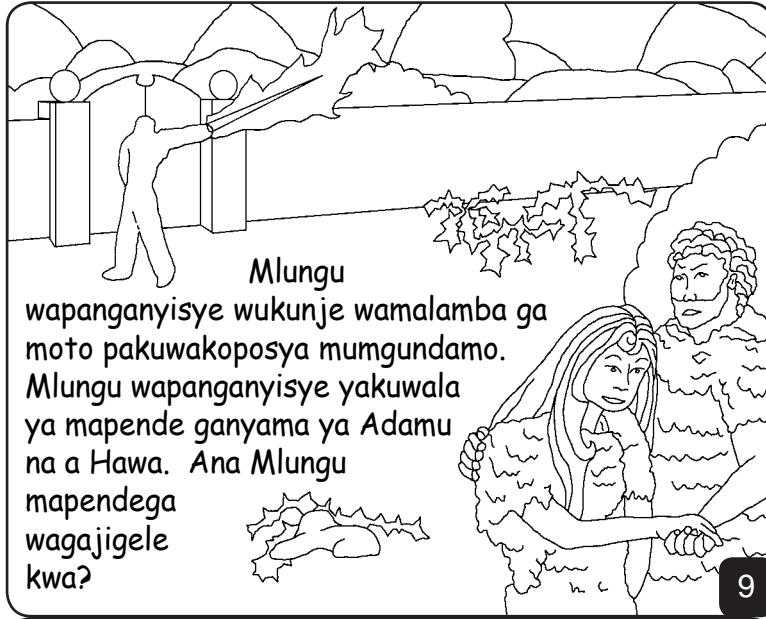
Kulimkuisimila ligulo Mlungu wayiche mumgundamo. Wamanyilile iwatesile Adamu ni a Hawa. Adamu wanawilaga a Hawa nombe a Hawa walitutilaga lijoka. Mlungu watite, "lijoka lilyesedwe, jwamkongwe tachipikana wululu pandawi jakuti akole mwanache." "Adamu, pakuwa mtesile ulemwa, litaka lilwesedwe ni miwa ni yisomangatimchilaga mpaka chitukuta kuti mpate yakulya."

7



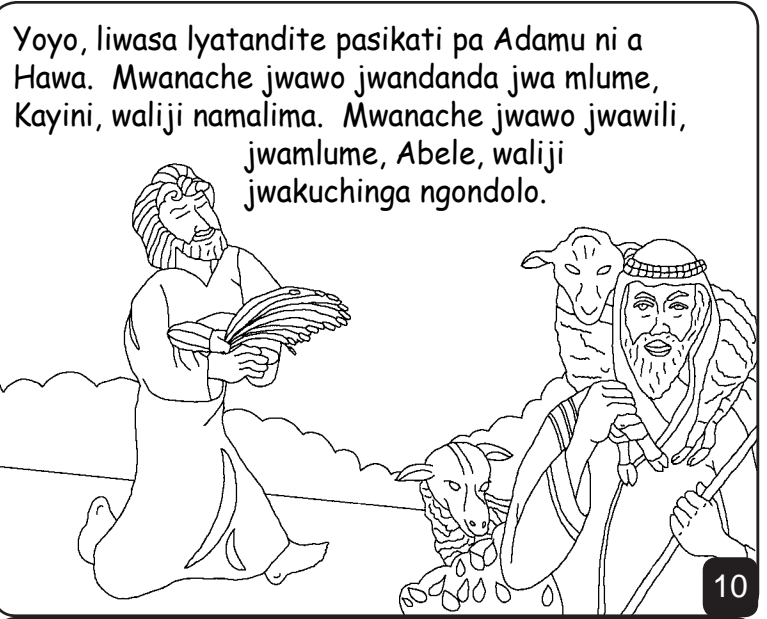
Mlungu wakopwesye Adamu ni a Hawa mumgunda wakusalala wula. Ligongo lya kulemwa kwawo, walekangene ni Mlungu jwakupeleka wumi.

8



Mlungu wapanganyisye wukunje wamalamba ga moto pakuwakoposya mumgundamo. Mlungu wapanganyisye yakuwala ya mapende ganyama ya Adamu na a Hawa. Ana Mlungu mapendega wagajigele kwa?

9



Yoyo, liwasa lyatandite pasikati pa Adamu ni a Hawa. Mwanache jwawo jwandanda jwa mlume, Kayini, waliji namalima. Mwanache jwawo jwawili, jwamlume, Abele, waliji jwakuchinga ngondolo.

10



Lisiku line Kayini wajigele mtuka wakwe way a kumigunda kwa Mlungu. Abele wajigele ngondolo syambone mnope mpela mtuka kwa Mlungu. Mlungu wasangalele ni mtuka wa Abele.

11



Mlungu nganasengwa kose ni mtuka wa Kayini. Kayini watumbile mnope. Nambo Mlungu watite, "Ana mlitesile yindu yambone, ngasimpochedwa nomwe wakwe?"

12



Lutumbile lya Kayini nganilutyoka kose. Palipapite ndawi wamputile Abele mpaka kumbulaga!

13



Mlungu wawechete kwa Kayini. "Mpweni alikwapi, Abele?" "Ngingumanyilila," Kayini wa lambwisye. "Ana une ndi mlonda jwa mpwanga?" Mlungu wa mpele Kaiyini chilango pakumtyochesya wukomboli wa unamchilima nikuwa jwakwambaga kwenda jenda.

14

Kayini watosile pameso pa a MBUJE. Walombele mwanache jwamkongwe jwa Adamu ni a Hawa. Wakwete liwasa. Mwangapita ndawi, yisukulu ni yisukulu ya Kayini yatupene mpaka



gumbasya musu wuwawutandisye.

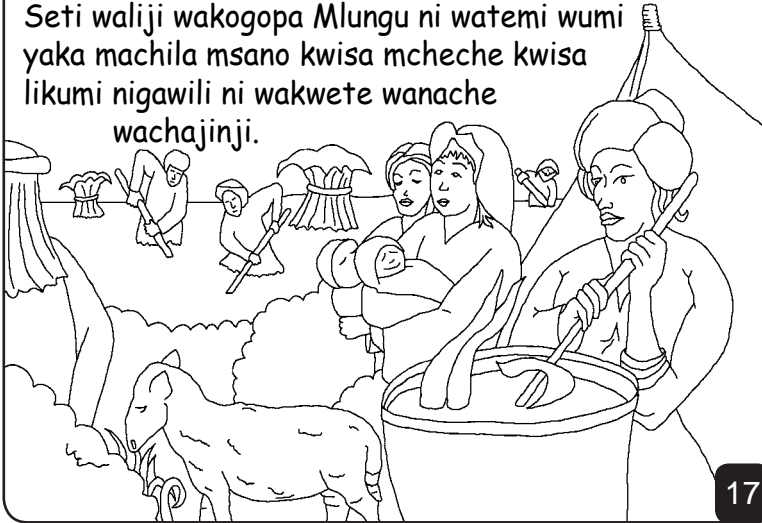
15

Pajele ndawiji liwasa lya Adamu ni a Hawa lyakusile mwachitema. Masiku gelega watamaga wumi welewu kupunda lelo.



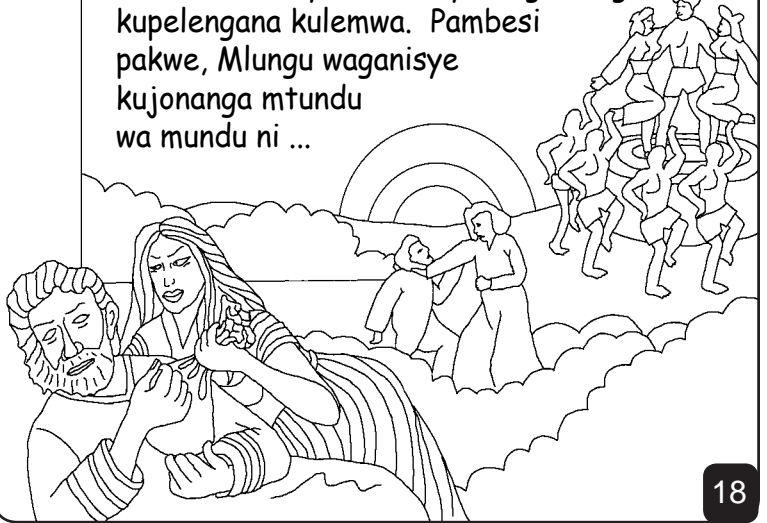
16

Ndawi jele mwanache jwawo Seti piwapali, a Hawa watite, "Mlungu ambele Seti kwichisya pa Abele." Seti waliji wakogopa Mlungu ni watemi wumi yaka machila msano kwisa mcheche kwisa likumi nigawili ni wakwete wanache wachajinji.



17

Pachilambo, wandu waliji wakulemwa mwakuti lukosyo ni lukosyo wagambaga kupelengana kulemwa. Pambesi pakwe, Mlungu waganisye kujonanga mtundu wa mundu ni ...



18

... yinyama ni ijuni. Mlungu wadandawile kuti wapanganyisye mundu. Nambo mundu jumo wasangalesye Mlungu ...



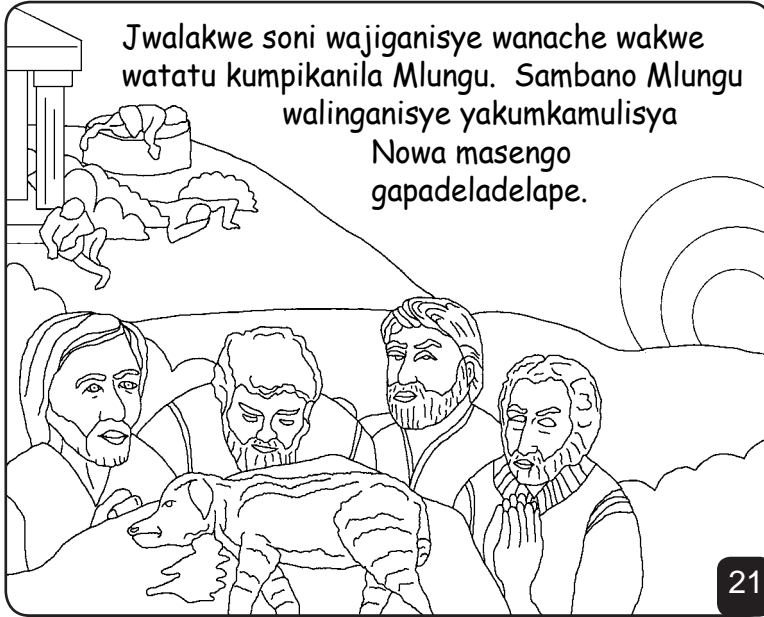
19

Mundu jweleju waliji Nowa. Jwalukosye lwa Seti, Nowa waliji jwakulupichika soni jwangali chipasipasi. Wajesile ni mlungu.



20





Jwalakwe soni wajiganisye wanache wakwe watatu kumpikanila Mlungu. Sambano Mlungu walinganisye yakumkamulisa Nowa masengo gapadeladelape.

21

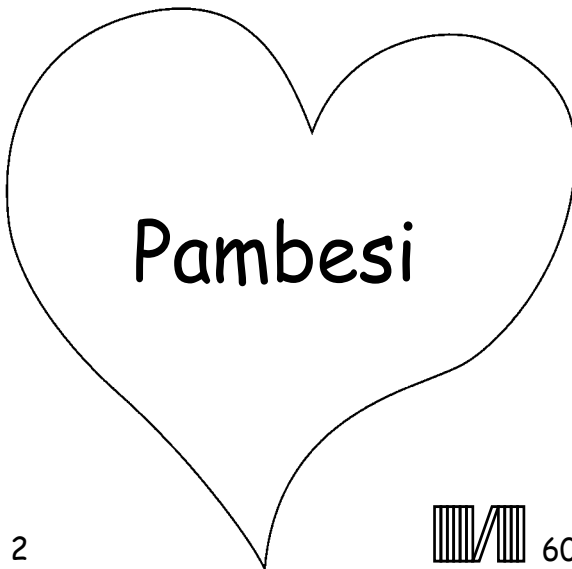
Kutanda kwa yisawusyo ya mundu Ndano jakutyochela M'malowe ga Mlungu, Bayibulo,

jikusimanikwa mu

Ndandililo 3-6

"Chipata cha malowe gawochikusapeleka lilanguka." Sabuli 119:130

22



Pambesi

2

60

23

Ngani sya mbayibulo si sikutusalila ya Mlungu jwetu jwakusimonjesya juwatupanganyisyewe soni jwakusaka kuti mmwe mummanyeye.

Mlungu akumanyilila kuti tutesile yakusakala yakusatendaga sambi. Chilango chasambi ni chiwa, nambo Mlungu akusa mnonyelaga kwakuti watumisye mwanache gwakwe jumpepe, Yesu, kukuwa pa msalaba nikupochela chilango ligongo lyasambi syenu.

Ni Yesu wajimwiche kuwawe niwapite kumangwawo kwini.

Naga mkukulupilila mwa Yesu nikumwenda jwalakwejo kuti amkululuchile sambi syenu, tachitenda yalakweyo. Tayiche kutama nomwe sambano nimwesoni timchiwa mwajwalakwejo mpaka kalakala.

Naga mkukulupililaga kuti achi chili chakuwona, wechetani ayi kwa Mlungu:

Wakunonyelwa Yesu, ngukulupilila kuti kwele ali Mlungu ni wawe mundu kuti awile sambi syetu, soni sambano ali chijumi. Chonde ayiche muwumi wangu nikungululuchila sambi syangu kuti myoyo mpaka ngole soni wumi wasambano, mkuti lisiku line singawe niwalakwe kundawi syosope. Angamuchisye kuti nakulupilileje wawo nikuwa ni wawo mpela mwana gwawo. Ami.

Walanjeje Bayibulo nikuwecheta ni Mlungu lisiku nilisiku! Yohane 3:16

24