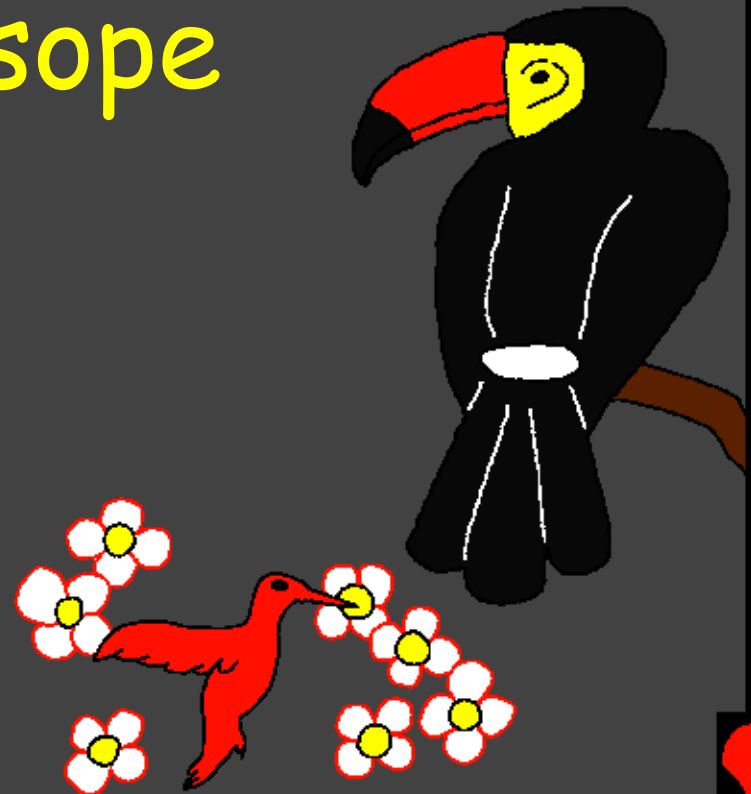


Baibulo ja Wanache
Jikumpela

Apo Mlungu ali
apanganyisye yosope



Jakulembegwa ni: Edward Hughes

Jakwambulaga ni: Byron Unger; Lazarus;
Alastair Paterson

Jajitichidwe ni: Bob Davies; Tammy S.

Jagopolelaga ni: Phiri Williams

Japanganisigwe ni: Bible for Children
www.M1914.org

©2020 Bible for Children, Inc.

Chikundisyo: Mkwete wukoto wa kulemba kapena
kwambula ndanoji nambo ngasumisya.



Ana watupanganyisye we
wani? Baibulo malowe ga Mlungu,
gakutusalila katande ka wandu.



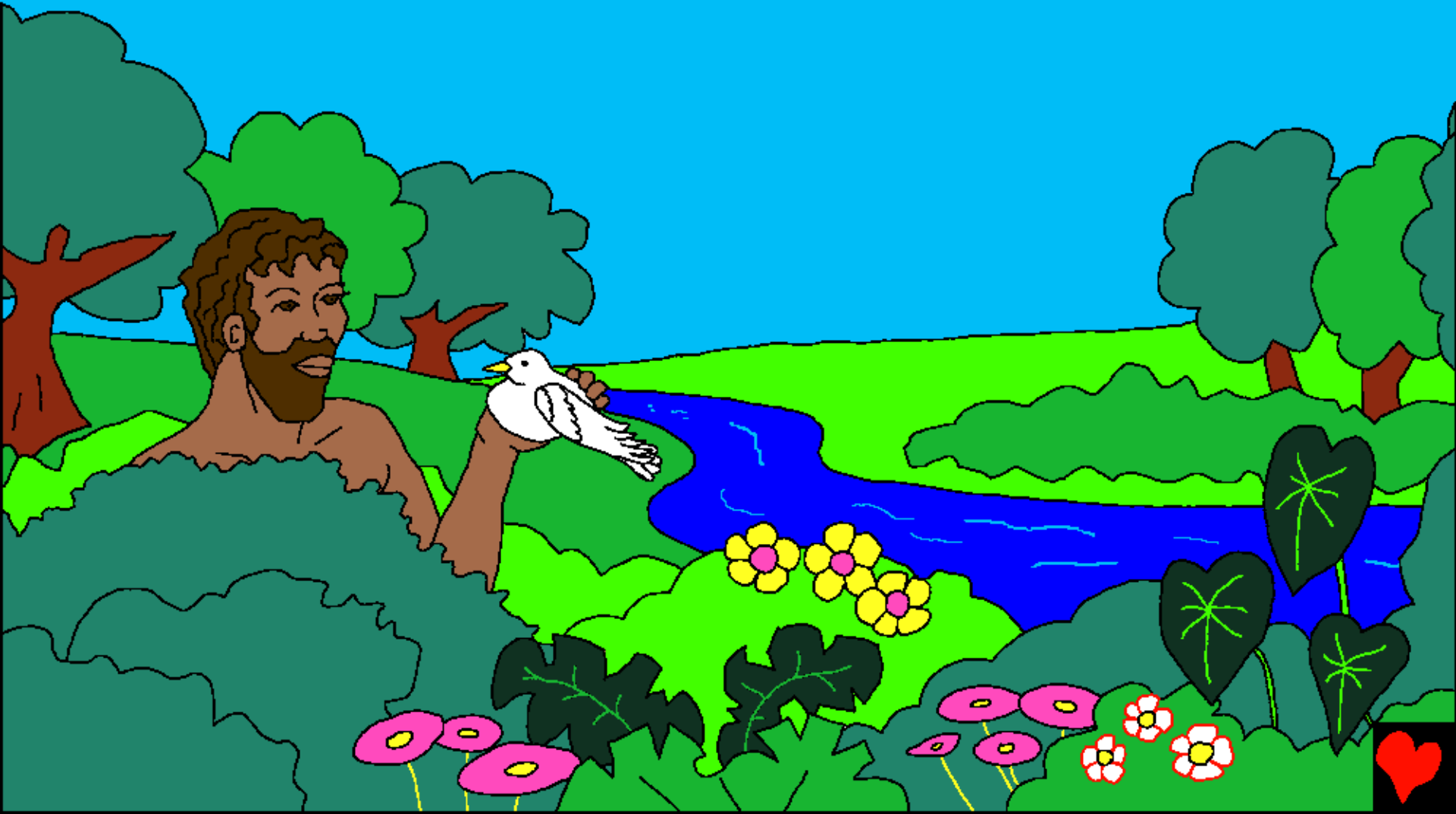
Kalakala mnope, Mlungu
wapanganyisye mundu jwandanda
mkunta Adamu.



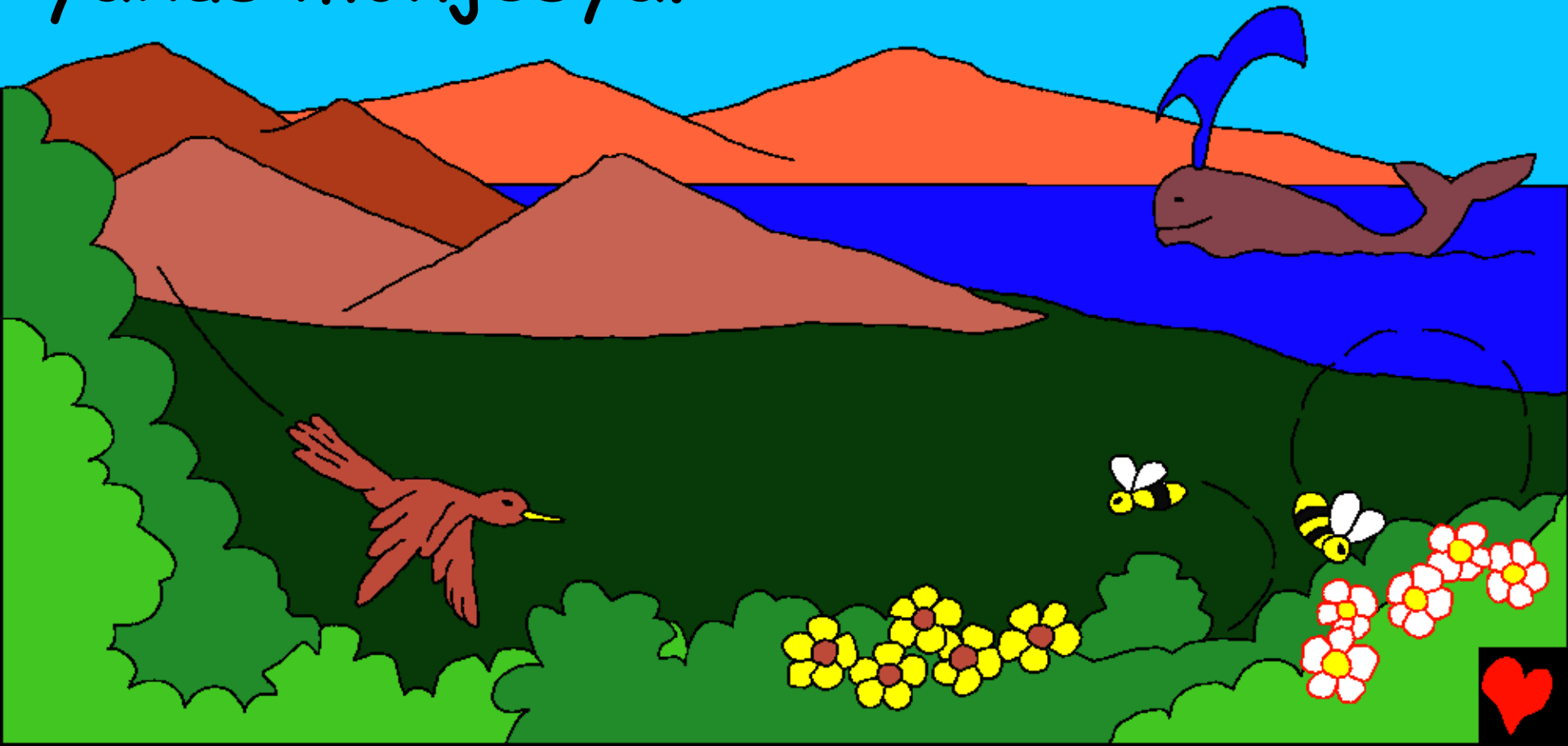
Mlungu wampanganyisye kutochela
kwilongo-litaka. Apo Mlungu
piwapepeleje mbepo mwa Adam,
wawele wa wumi.



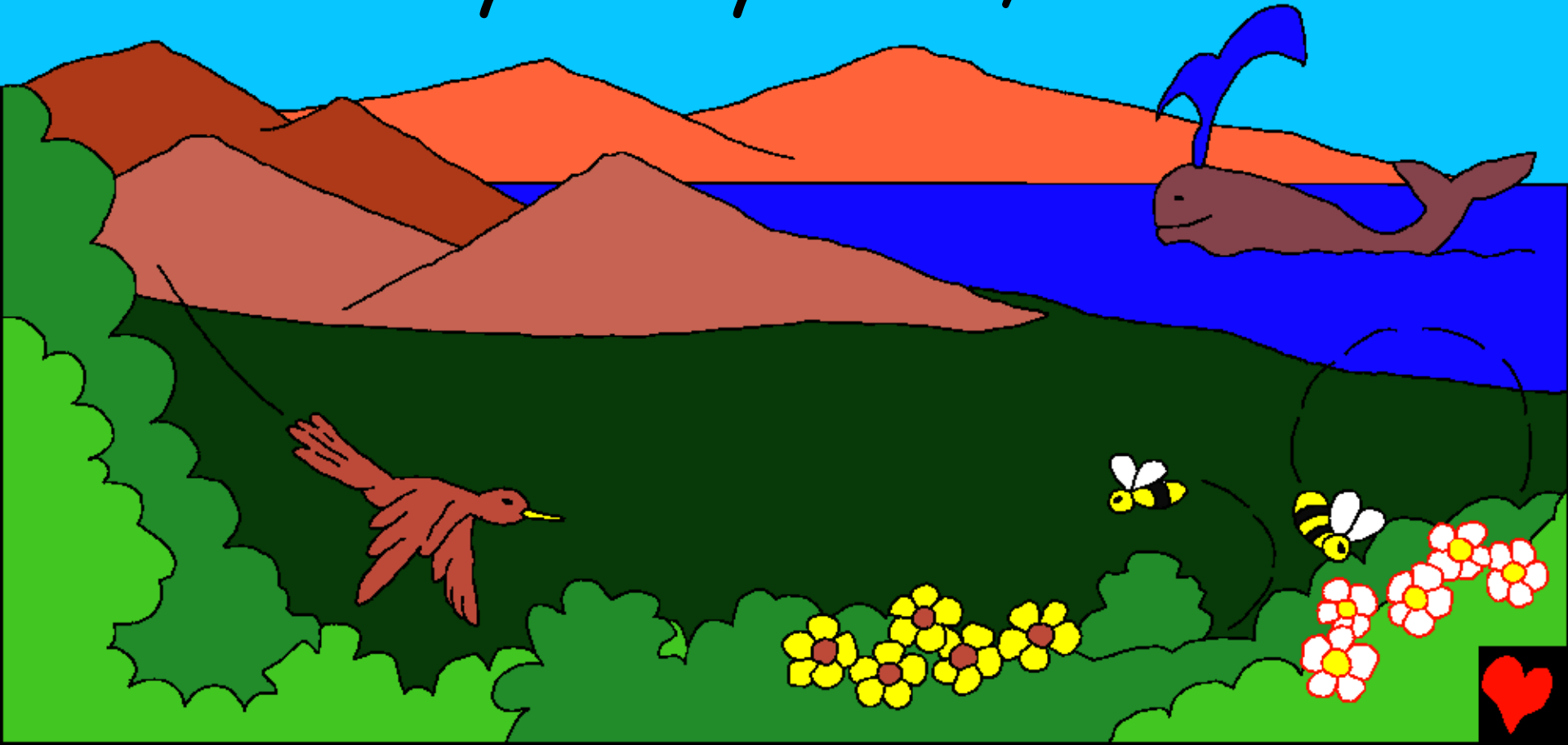
Wasumanikwe asyene mumgunda
wakusalala wa Edeni.



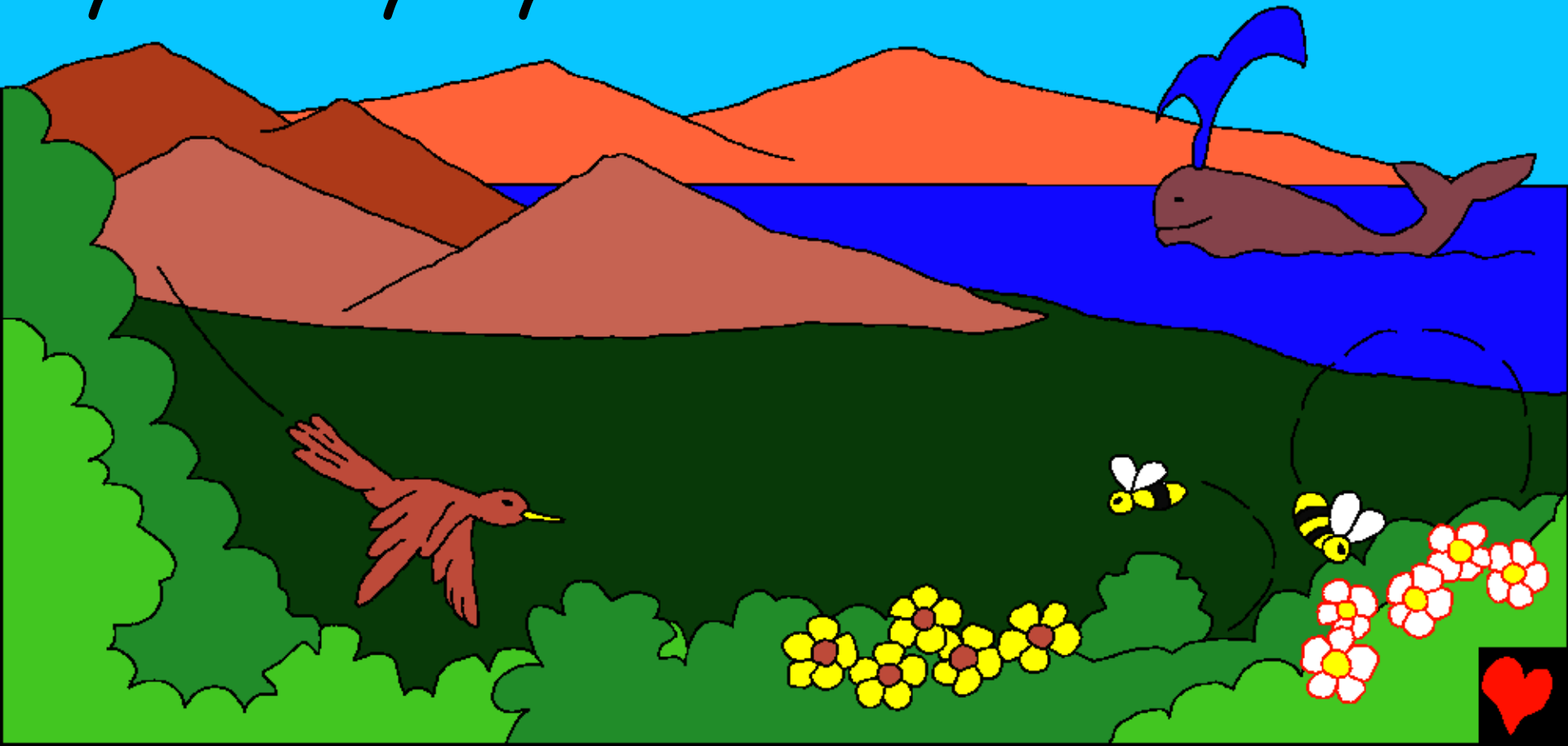
Mlungu mkinapanganye Adamu,
wapanganyisye chilambo chakusalala
nikugumbasya ni yindu
yakusimonjesya.



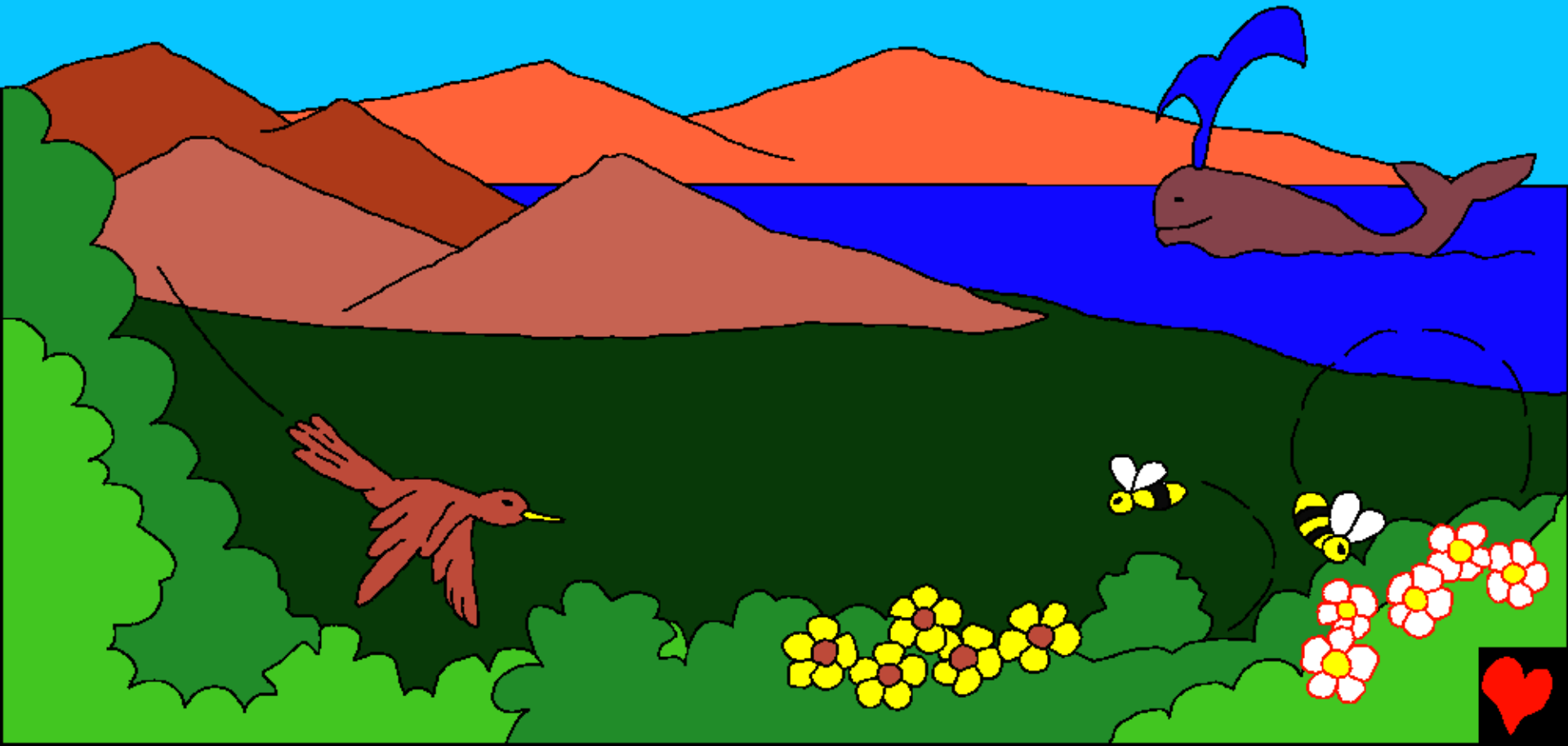
Panandi panandi Mlungu
wapanganyisye malo ga matumbi,
gatyatyatya, maluwa ga kununjila
kwika soni yitela yelewu, ...



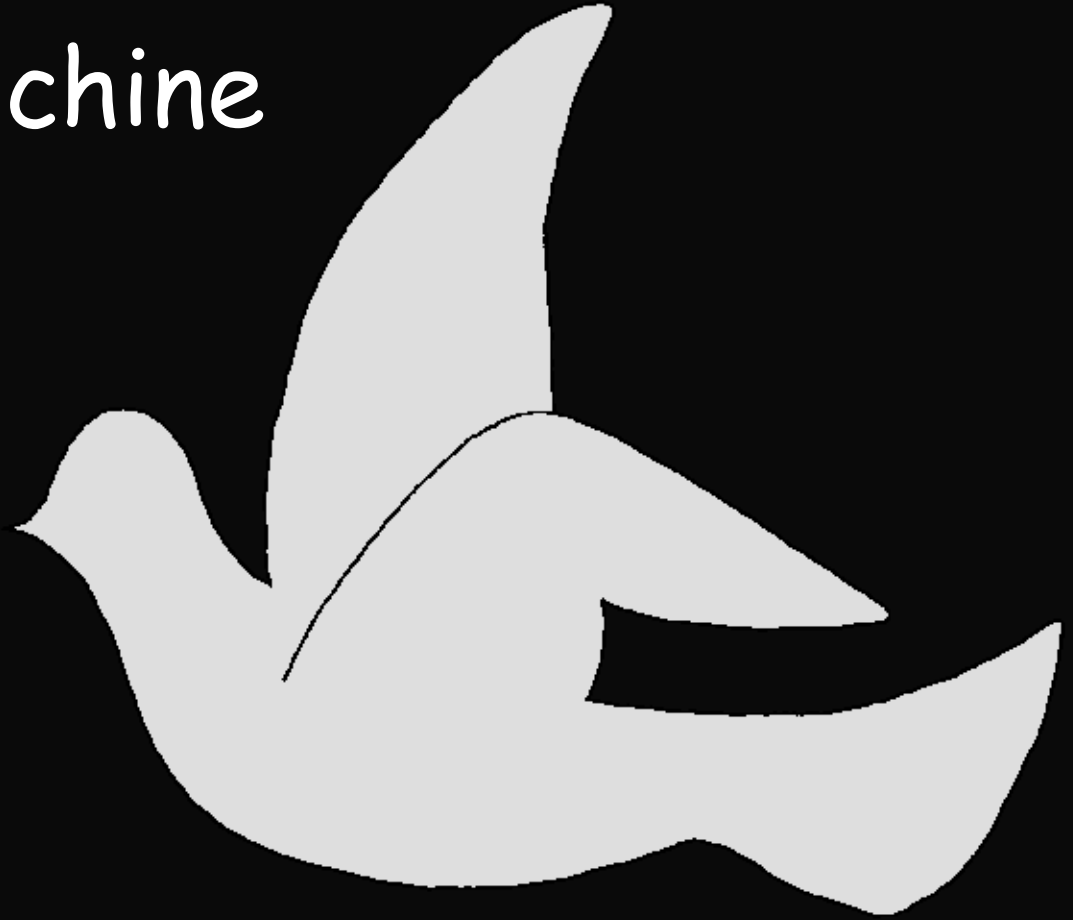
... ijuni yakusalala mang'omba
ni nyuchi, somba syekulungwa
syang'anda mmatope ni ngonokono
syakutelyesya.



Tugambe kuti Mlungu
wapanganyisye chine chilichose
chichipali-wosopeyene.



Pandanda pene,
mkinapanganye chine
chilichosope,
paliji pangali
chilichose,
Mlungupe.
Paliji pangali
wandu, malo
niyindu.



Paliji pangali kandu.

Paliji pangali

lilanguka

kapena chipi.

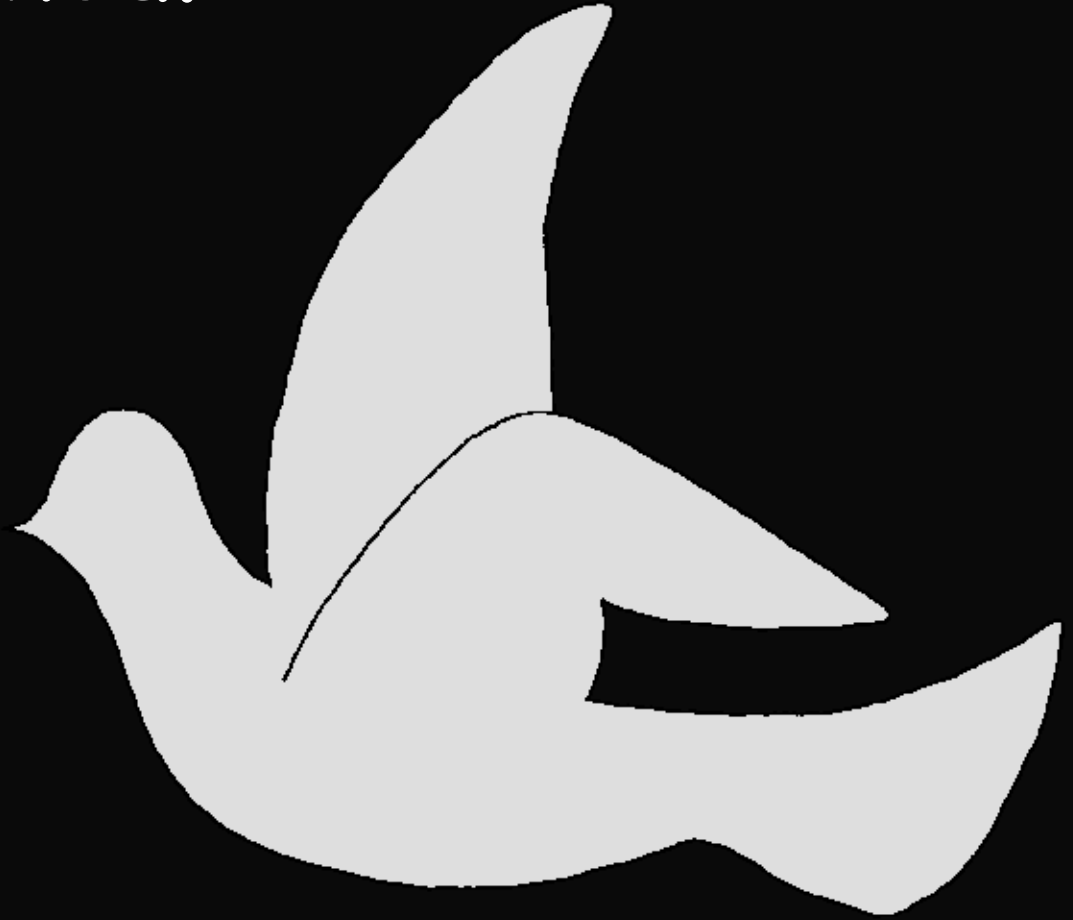
Kwaliji

kwangali

chikwesya

kapen

chitiwi.

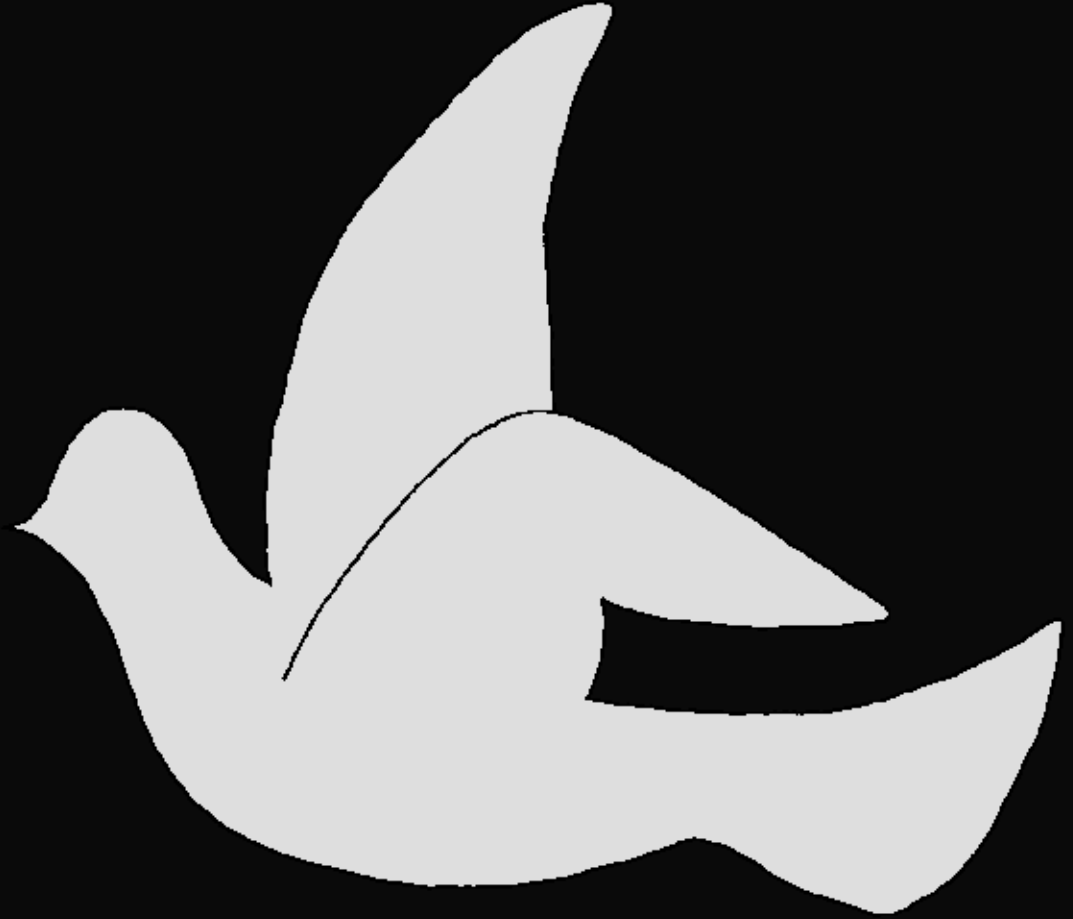


Kwaliji kwangali liso
kapena Malawi.

Kwaliji kwana
Mlungupe.

Juwaliji
jwangali
ndandililo.

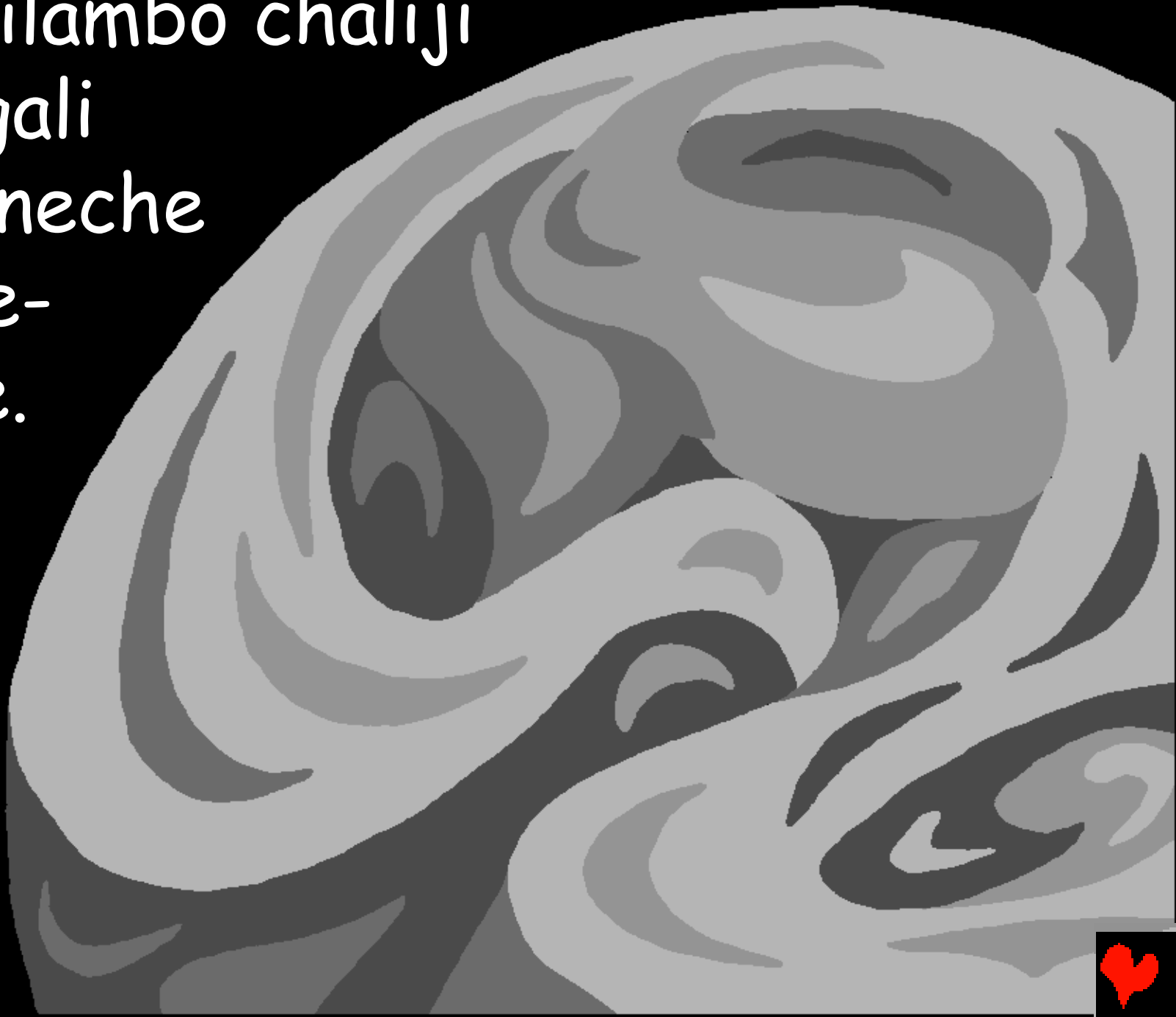
Yoyo Mlungu
watesile!



Pandandililo pene Mlungu
wapanganyisye kwinani ni
chilambo chapasi.



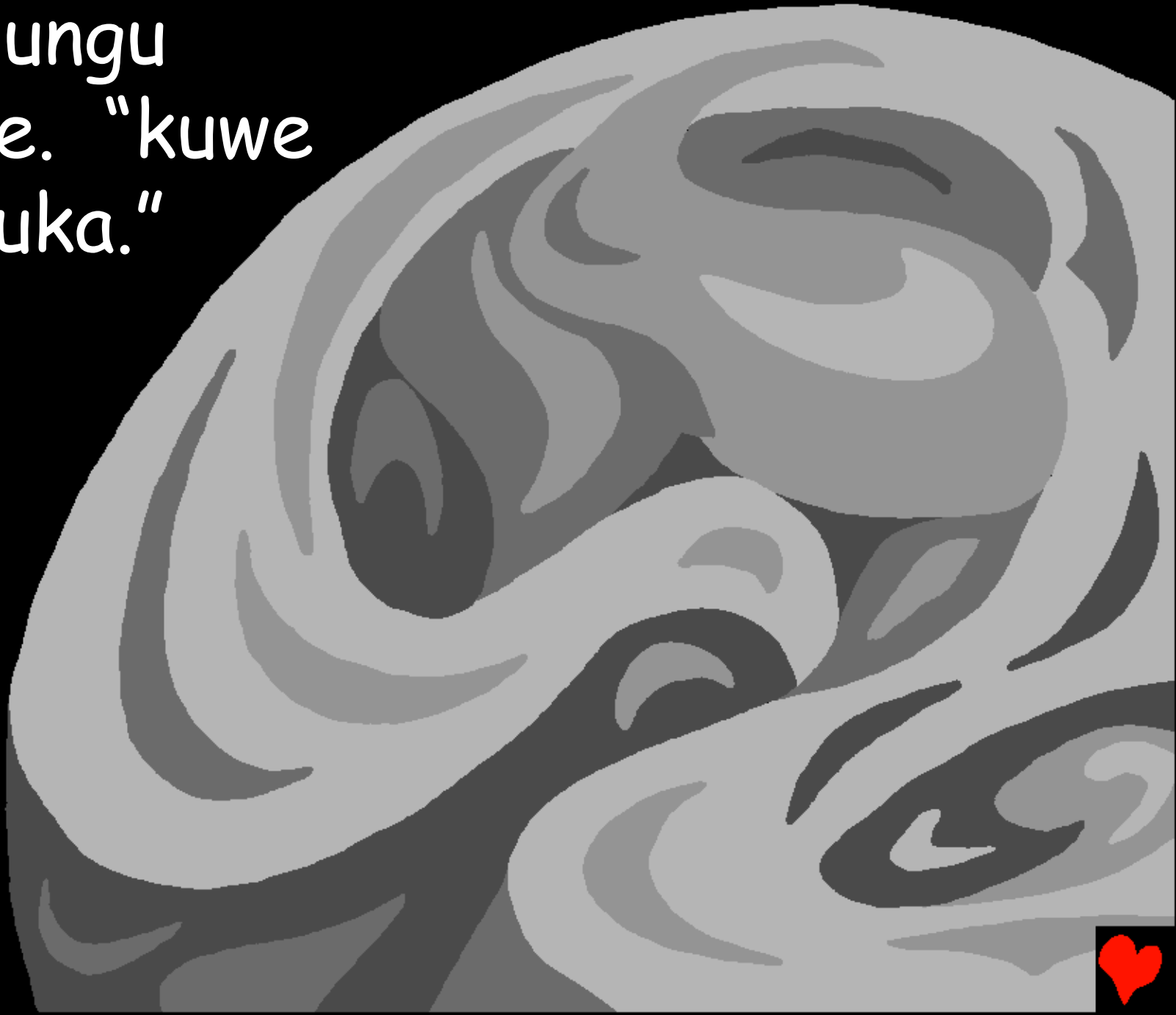
Ni chilambo chaliji
changali
wuwoneche
wusye-
syene.



Chipi chaliyi chili
chigumbele
posope.



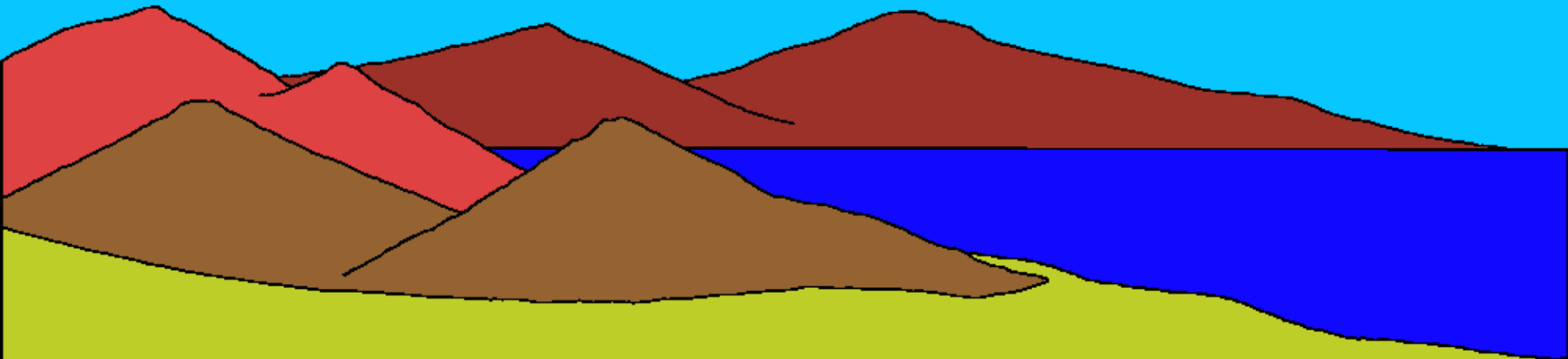
Ni Mlungu
watite. "kuwe
lilanguka."



Niyoyo kwaiche kulanguka. Mlungu
walikolasile lilanguka kuti lisiku
nichipi wachikolasile chilo. Niyoyo
ligulo soni kundawi yaliji lisiku
lyandanda.



Lisiku lyawiri, Mlungu walamulile
mesi ga mbwani, nyasa kuwa
pampepe pasi kwinani.



Lisiku lya tatu, Mlungu watite, "kuwe
kwana mkuli." Nipo yatite yoyo.



Mlungu soni walamulile kuti kuwe
manyasi ni maluwa ni
mawukutu ni
yitela.



Nipo yatendekwe. ligulo
soni kundawi yaliji
lisiku lyatatu.



Mlungu soni wapanganyisye
lyuwa, ni mwesi ni ndondwa
syejinji syakuti pangali
jwakombola kusiwalanga.



Ligulo lyayiche soni
kundawi kuyiche
lisiku lya mcheche.



Yawumi
ya mnyasa
ni somba
kwisa soni
yijuni Mlungu
wayilinganyisye
lisiku lya msano.



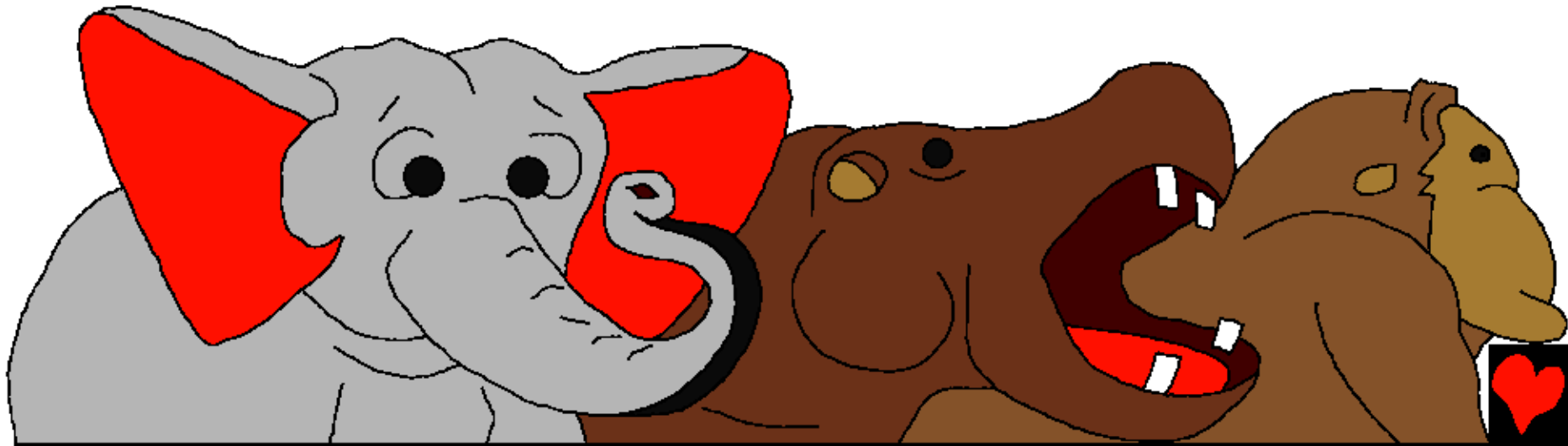
Jwalakwe
wapanganyisye
somba
syekulungwa
ni twamwana,
ndiwatiwa
syelewu ngongolo
tujuni twa mwana
twakusalala.



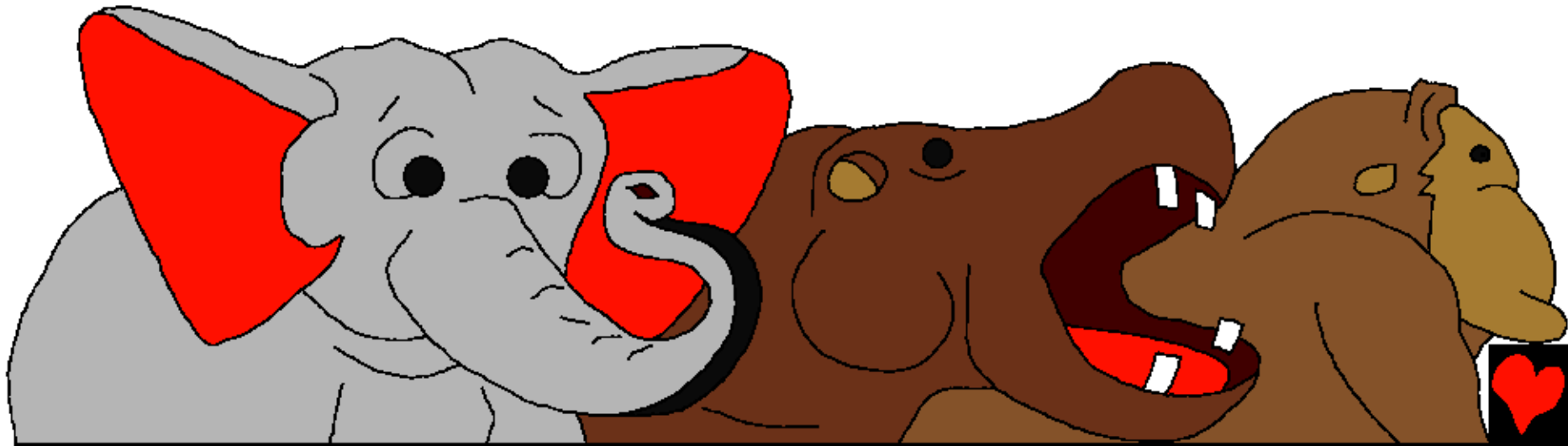
Mlungu
wapanganyisye
somba syamitundu
yelekangane
kuti yisengweje
pachilambo ni
mnyasa ni mwinani.
Yoyo ligulo ni
kundawi kwayiche
ali nilisiku lyamsano.



Pambesi payeleyi, Mlungu
wawechete soni. Watite, "chilambo
chikole yawumi..." Mtundu wuliwose
wa yinyama, tulombo ni yakwawa
yosope yapanganyikwe.



Kwapali ndembo syagwendanya
chilambo ni tulumbo twa nyasa.
Majani, swala syelewu nipo ngwena
syawukali ni achigotogolo nipo soni
yiwulu. Mitundu josope jayinyama
wapanganyisye Mlungu lyele lisiku.



Ligulo soni kundawi yawele
lisiku lya msano ni chimo.



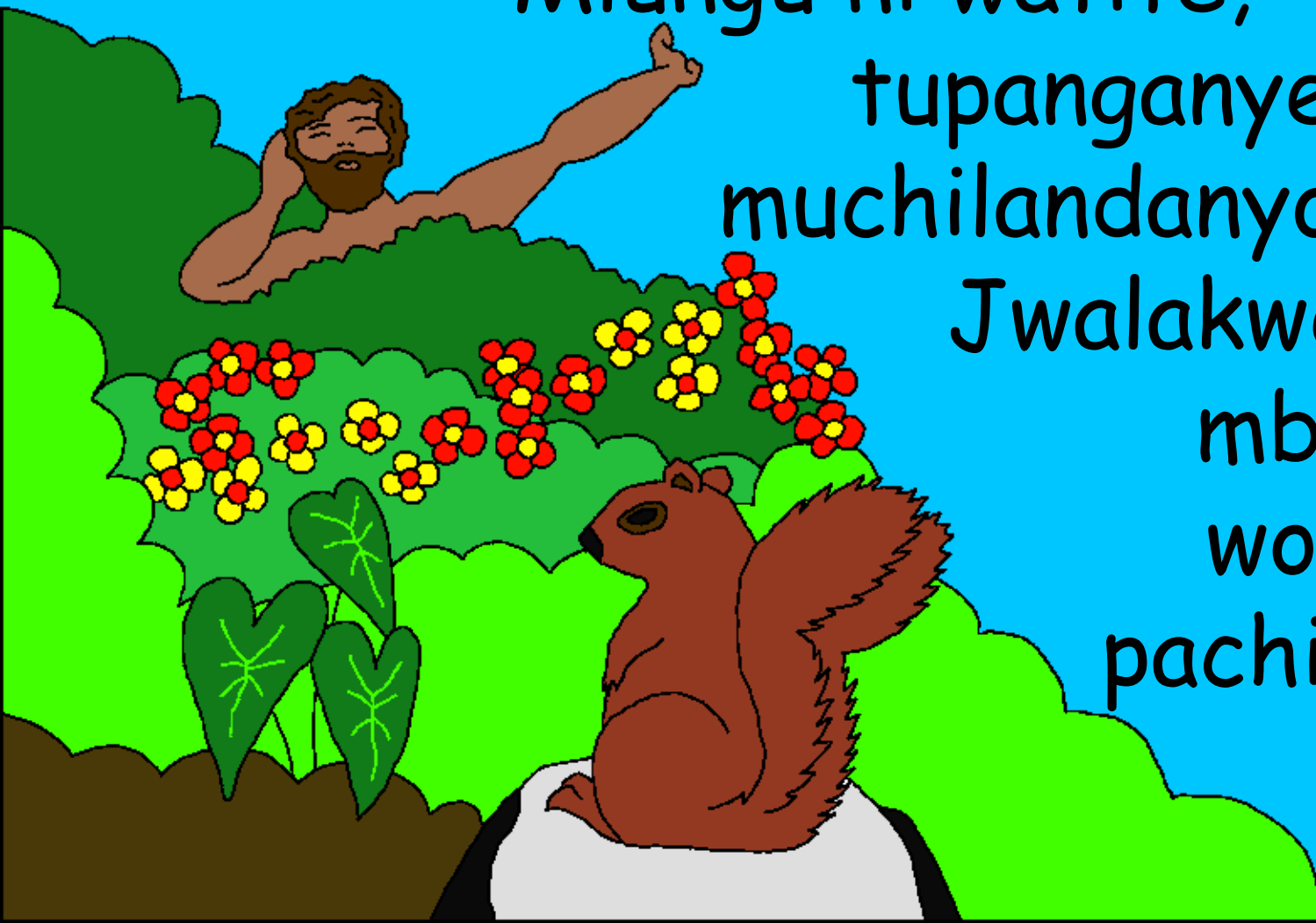
Mlungu watesile chine chakwe lisiku
Iya msano ni chimo- chindu
chakusosekwa. Chine
chilichose chali
mmalo mwake
ligongo Iya
mundu.



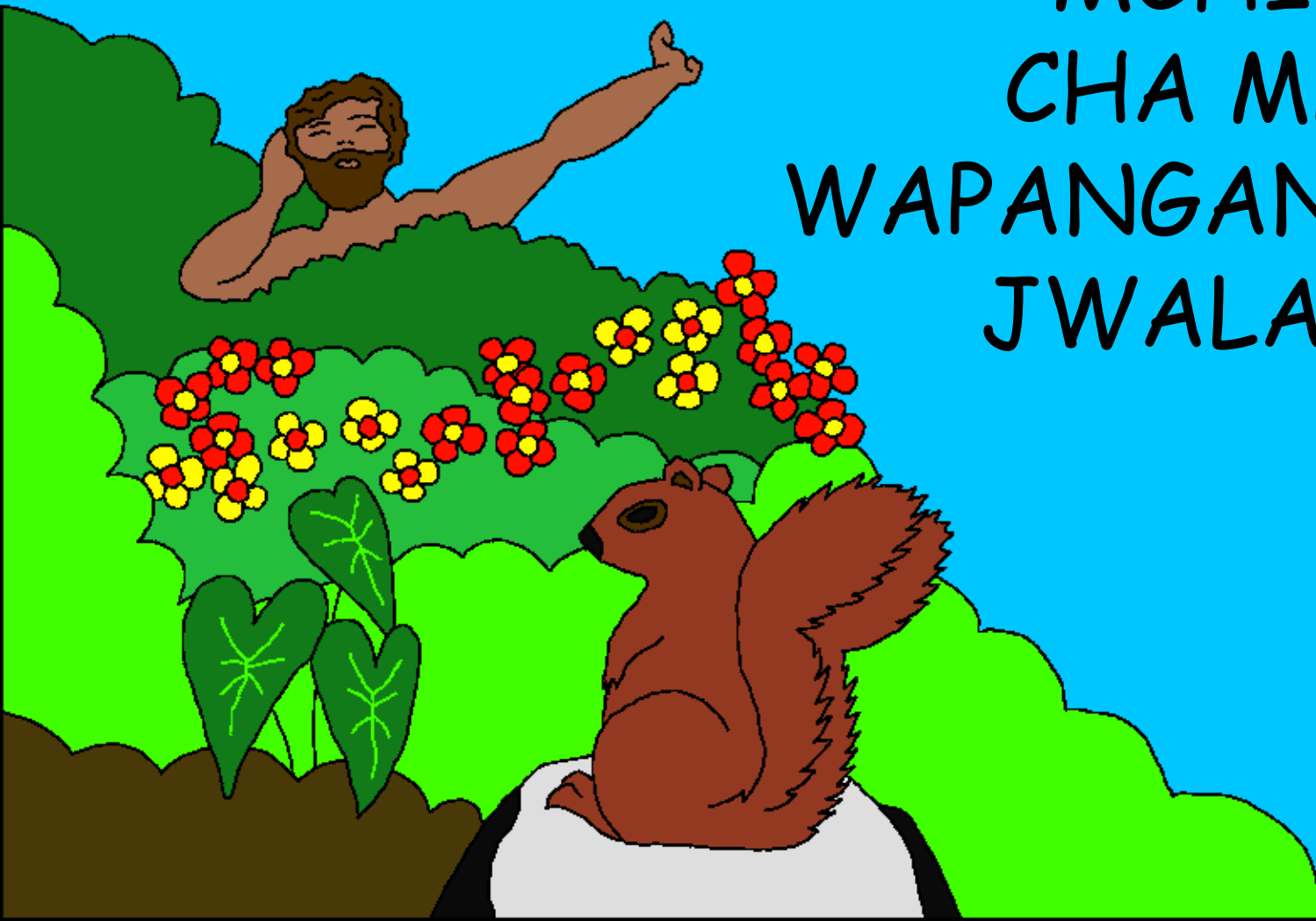
Paliji pana yakulya nambo soni
yinyama yakumkamusya mundujo.

Mlungu ni watite, "kwende
tupanganye mundu
muchilandanyo chetu.

Jwalakwejo awe
mbuje jwa
wosope ya
pachilambo."



YOYO MLUNGU WAPANGANYISYE
MUNDU MCHILOSYO CHAKWE;
MCHILOSYO
CHA MLUNGU
WAPANGANYISYE
JWALAKWE ...



Mlungu
wawechete
kwa Adam.
"Mlye
chilichose
chimkusaka
kutyochema
mumgundamu.



Nambo kasimlya
kutyochema
mchitela
chakupeleka
wumanyisi
wayambone
ni yakusakala.



Naga simlye
yakutyochela
mwalakwemu
nditu
timchiwa."



Ambuje Mlungu watite soni,
"nganikuwa kwambone kuti
jwamlume awe jika.
Tinimpanganyisye
jwakumkamuchisya."



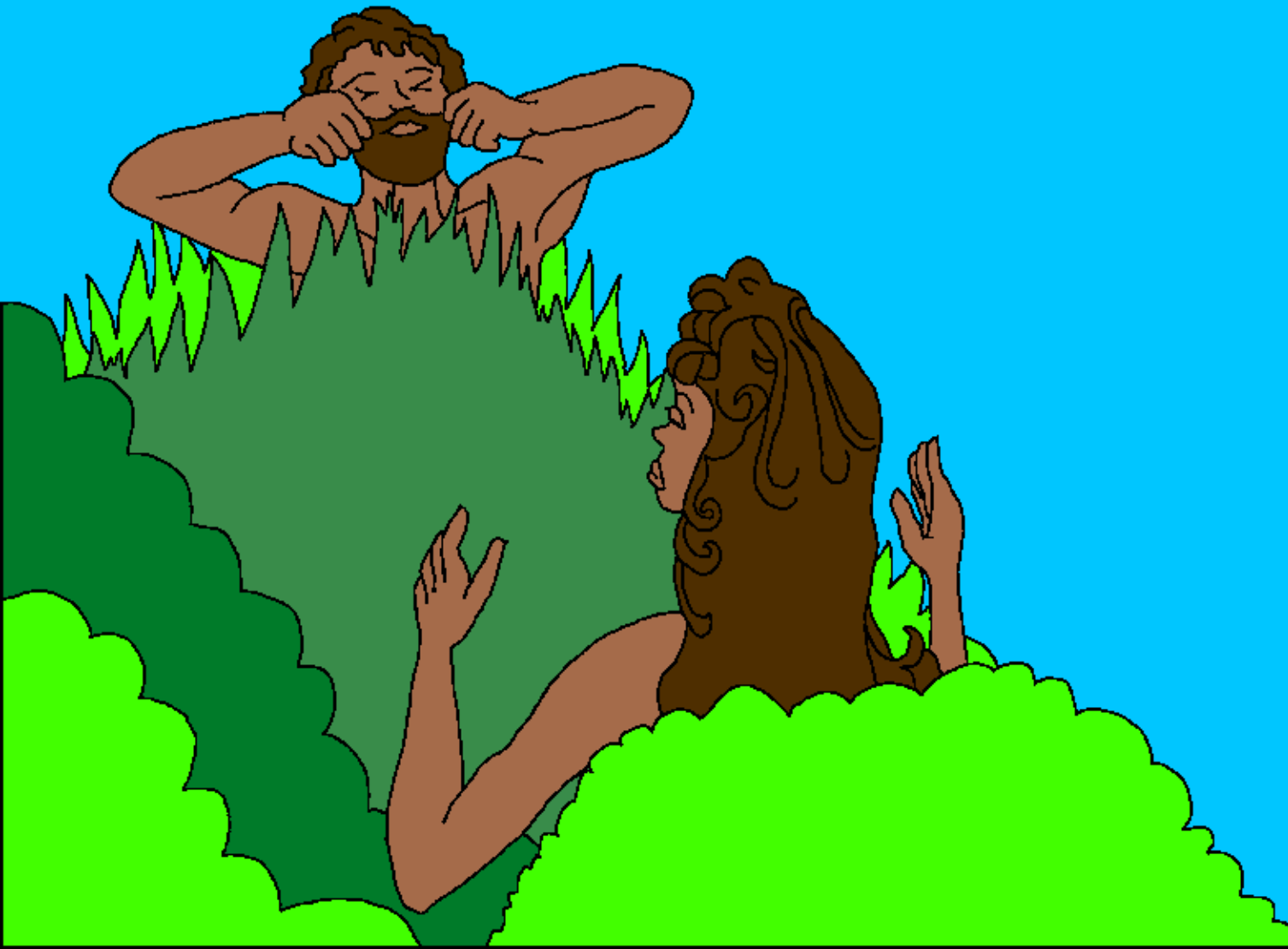
Mlungu wayiche
ni yijuni niyinyama
yosope kwa Adamu,
Adamu wayitile mena
wosopeyene.



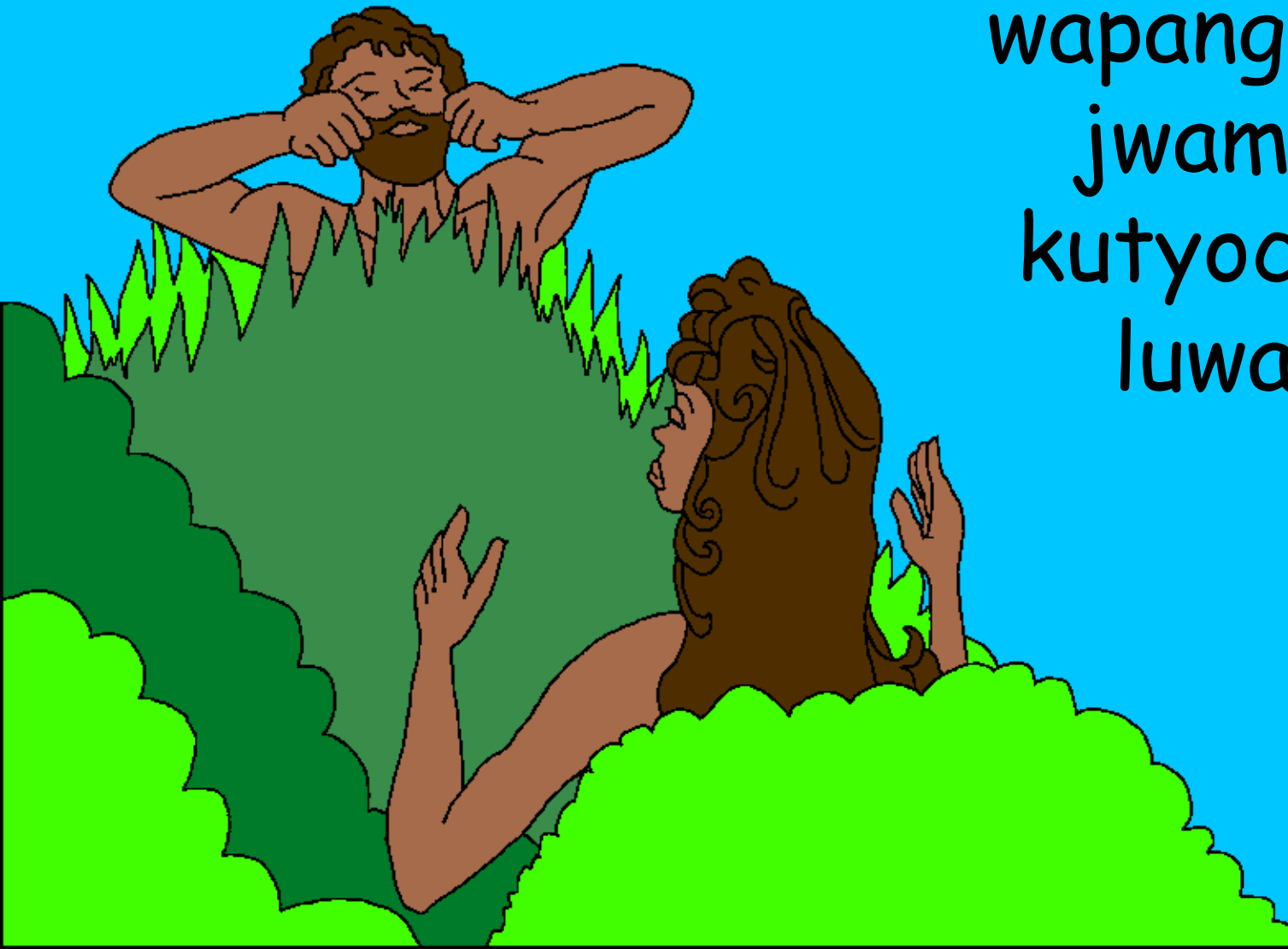
Akwendela kuti waliji wakalamuka
pakutenda yalakweyo.
Nambo payijuni ni yinyama
yosopeyo paliji pangali
jwakwendela kuwa
mjakwe Adamu.



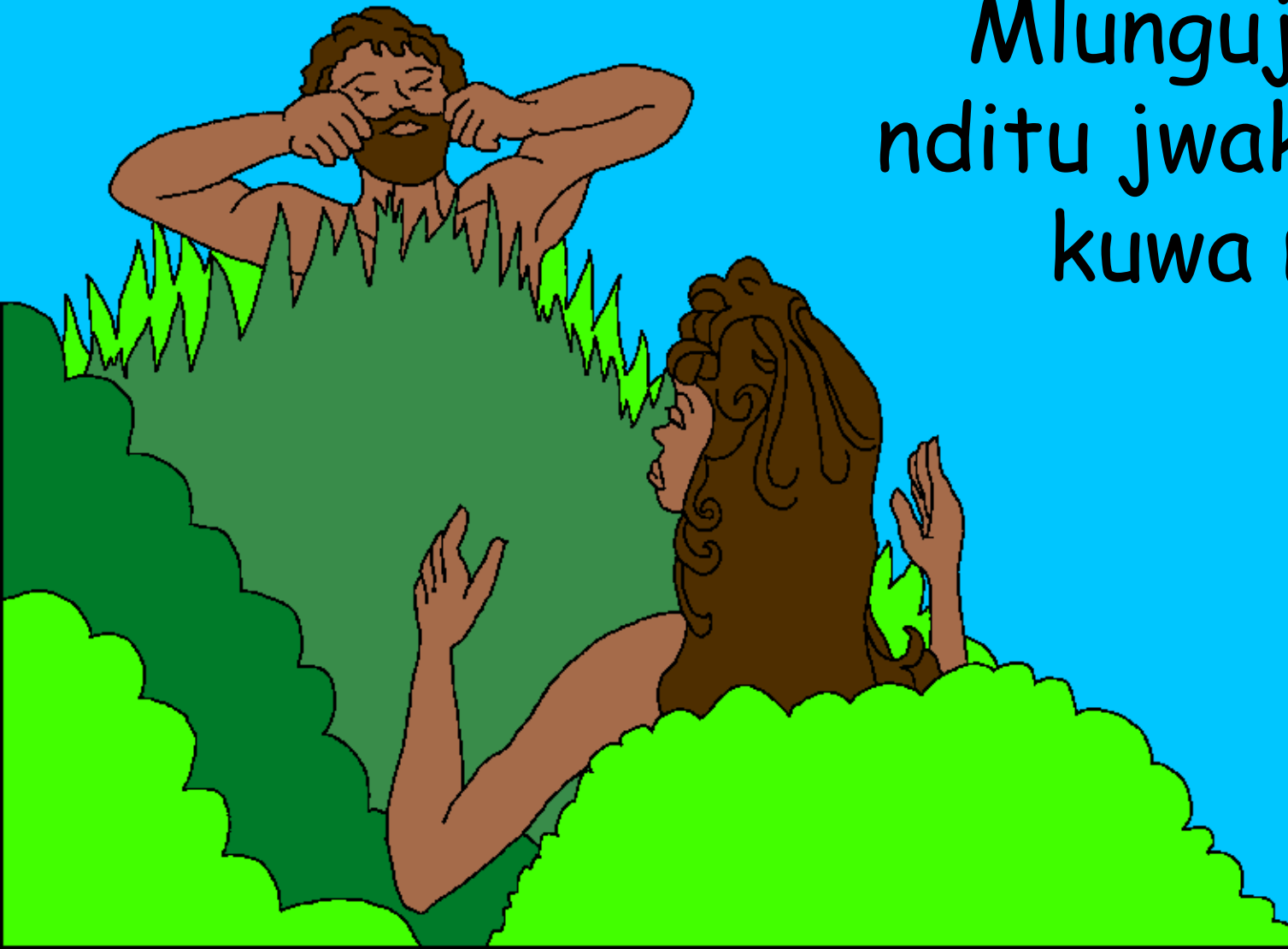
Mlungu wamgoneche Adamu
ligono, lyakuwa nalo.



Ali atyosisye luwalati lumu lwamundu
jwamlugonoju, Mlungu
wapanganyisye
jwamkongwe
kutyochela ku
luwalati lwa
Adamu.



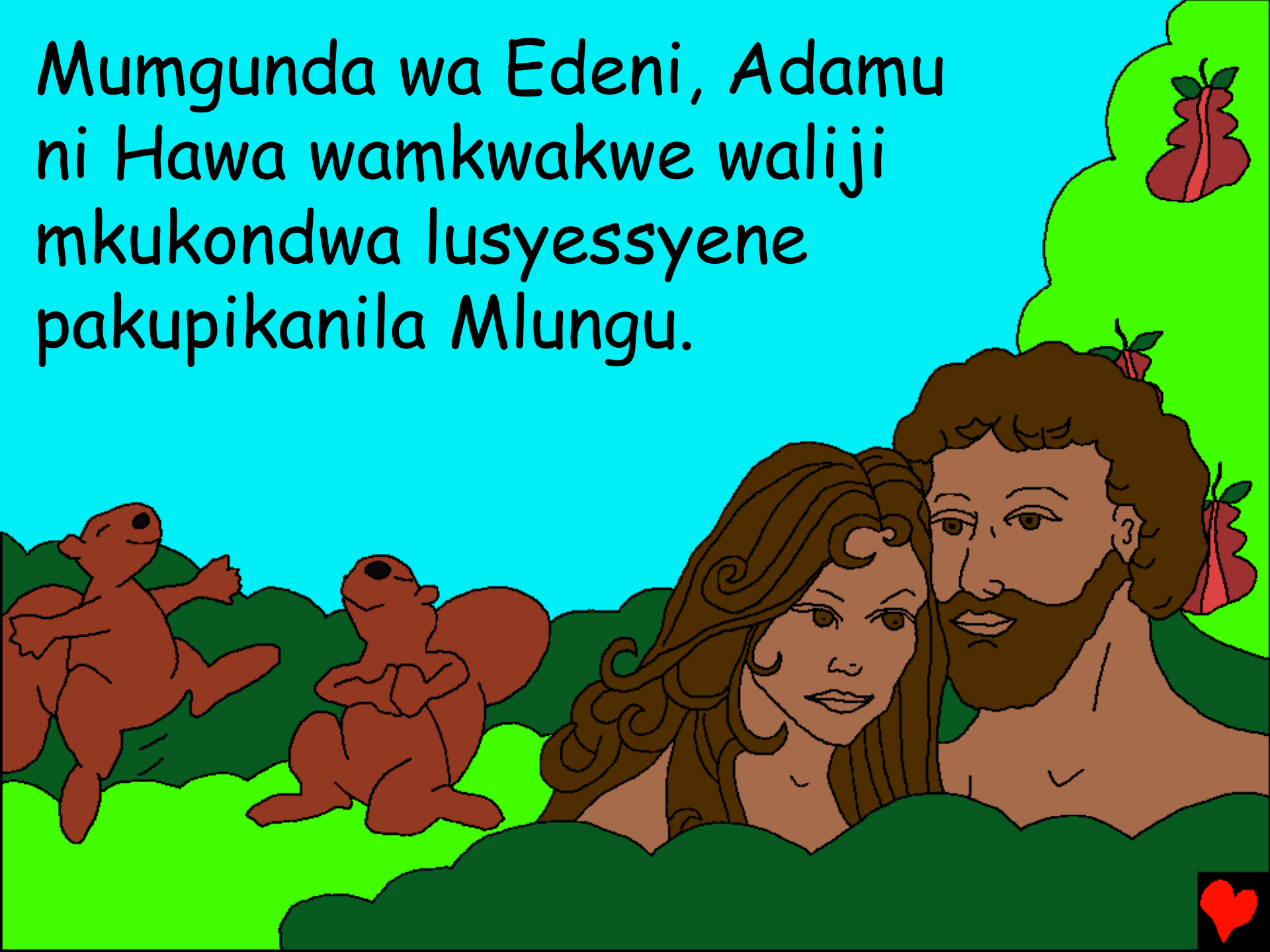
Jwamkongwe
juwapanganisye
Mlunguju waliji
nditu jwakwenela
kuwa mjakwe
Adamu.



Mlungu wapanganyisye
yosopeyene mmasiku
msano nalimo. Yoyo Mlungu
walijaliwe lisiku lya msano
nikawili ni kuwa lisiku
lya ku pumula.



Mumgunda wa Edeni, Adamu
ni Hawa wamkwakwe waliji
mkukondwa lusyessyene
pakupikanila Mlungu.



Mlungu waliji Mbuje gwawo,
chisamalilo chawo ni mjawo.



Apo Mlungu ali apanganyisye yosope

Ndano jakutyochela M'malowe ga Mlungu,
Bayibulo,

jikusimanikwa mu

Ndandililo 1-2

"Chipata cha malowe gawochikusapeleka
lilanguka." Sabuli 119:130



Pambesi



Ngani sya mbayibulo si sikutusalila ya Mlungu
jwetu jwakusimonjesya juwatupanganyisyewe soni
jwakusaka kuti mmwe mummanyeye.

Mlungu akumanyilila kuti tutesile yakusakala
yakusatendaga sambi. Chilango chasambi ni
chiwa, nambo Mlungu akusa mnonyelaga kwakuti
watumisye mwanache gwakwe jumpepe, Yesu,
kukuwa pa msalaba nikupochela chilango ligongo
lyasambi syenu. Ni Yesu wajimwiche kuwawe
niwapite kumangwawo kwinani. Naga mkukulupilila
mwa Yesu nikumwenda jwalakwejo kuti
amkululuchile sambi syenu, tachitenda yalakweyo.
Tayiche kutama nomwe sambano nimwesonni
timchiwa mwajwalakwejo mpaka kalakala.



Naga mkukulupililaga kuti achi chili chakuwona,
wechetani ayi kwa Mlungu:Wakunonyelwa Yesu,
ngukulupilila kuti kwele ali Mlungu ni wawele
mundu kuti awile sambu syetu, soni sambano ali
chijumi. Chonde ayiche muwumi wangu
nikungululuchila sambu syangu kuti myoyo
mpaka ngole soni wumi wasambano, mkuti
lisiku line singawe niwalakwe kundawi syosope.
Angamuchisye kuti nakulupilileje wawo nikuwa
ni wawo mpela mwana gwawo. Ami.

Walanjeje Bayibulo nikuwecheta
ni Mlungu lisiku nilisiku! Yohane 3:16

