



Elisabet te yenken tem, lup ep yekwo let ep yekwo let ges wuri (6-pela) yim, God ere eteri kom tame Gebriel erne sene won ere Galili distrikke tetan kom Nasaretke yim. Yim, ere munguta wuri tene tuma wusoute yim. Ete ta tene eme tame womenem. Tame eri sig Josep. Ere kiyi temenem Keryen Devit eteri supa. Munguta teri sig Maria.



God eteri kom tame ere tene etep  
wom. Maria, ne mane akte. God ere  
nene noub nenem. Yuri ne yenken  
tete nenbe. Ne taureyenke  
warwite nenbe. Ne erne sig  
Jisas tete. Yuri ere keryen  
tete, tatame eme eterne  
etep wote. Ere Hevenke tetan  
God Eteri Yen. Etep wote. Kiyi  
Devit ere keryen temenemkap,  
yuri Jisas ere eteri yaku pette,  
ere keryen tete. Ere warege Jekop

eteri tame supa emne somsom  
panen site. Ere keryen som  
temente. Ere etep wom.



Maria te erne awosein etep wom. An  
yenken mapeke te? An tame mak  
narten. Ere tene awosein etep wom.  
Akei wos God eteri kulke tetan.  
God Eteri Wou ere nerenke  
yate. God eteri mure ere  
nene newote. Etepkap  
ne yenken tete. Yuri  
ne warwite yen eme  
erne etep wote.  
Ete yen ere  
yenbosubuwai. Ete

yen ere God  
Eteri Yen.  
Eme etep wote.



Ete yabel Maria te wos peten agetage te kowke yim, te Juda distrikke tetan kom nebule etek yim. Yim, te Sekaraia eteri akek wurin Elisabet tene pir wom. Pir wom, Elisabet teri sek temenem yen ere titowum.



Titowum, God Eteri Wou ere  
Elisabet tene gulelemenem, te  
Maria tene noubke etep wom.  
God ere nene noub kobo  
lam. Ere akeite ta emne  
etepkap beke nen. Neri  
sek tetan yen eter kir,  
God ere erne kir kobo  
late.



Jisas Kraiss eterne nawo te warwiyimkap, eri sike gwo. Eri nawo te Maria, eme tene Josep eterne womenem. Josep ere Maria tene mak panemenemke, eme lam, Maria te yenken tem. Yen ere God Eteri Wou eteri yen.



Tene womenem tame, Josep, ere tame yenbo. Ere metem, te yenken tem, ere akeite tatame emne beke wo. Ere papke abom. An tene beke kip pane, an tene mesginte. Sene ere etep abom. An tatame etemri bitimik etep tete, te sebera yate wurken. Etep abom, ere etepkap beke te, ere mo wom.



Josep ere som abobetem, ere nugsi tuknalam. Nugsi tuknalam, God eteri komri tame wuri ere erne yan terekwunen etep wom. Josep, ne Devit eteri tame supa. Ne Maria tene panete. Ne mane akte. Ne ek met. Ete yen, teri sek tetan yen, ere God Eteri Wouke newom yen. Te taureyen warwite nenbe.



Ere tatame emri wule yaper peten sepitte,  
ere tatame emne sene pette, eke ne eri sig Jisas  
tete. Etep wom. Josep ere nugsik  
tuknalamke, ere sene wayen sin God eri  
komri tame ere erne wom tuma ere  
etepke tobom. Ere ta tene panem.  
Panem, ere etetken beke tukna.



Berai. Te ete yen ek warwiyimke, yuri epe kir  
tuknam. Te taureyen warwiyim, eme erne sig tem.  
Tem sig Jisas.



Yuri Romri Keryen Sisar Ogastus ere wule wuri wom.  
Ere etep wom. Nogwape komri tatame emri sig nema  
pette. Tatame nogwape  
eme emri maima komke  
yim, eme emri  
sig newote yim.



Yim, Josep ere  
Devit eteri tame supa.



Kiyi Devit eteri nawo te erne Betlehemke warwiyim,  
eke Josep ere Galili distrikri kom Nasaret mesginin  
Judia distrikri kom  
Betlehemke yim.



Ere eteri ta Maria etetken epe etep yim, epe epri  
sig newote yim. Maria tene Josep eterne womenem,  
te bepou me ayi  
ayabetem, te yen lekan  
yenke temenem,  
eke epe etep



yim.



Yin Betlehemke  
temenem, Maria  
te yen etek  
warwiyim.



Te mase tobo yen, taureyenke warwiyim.  
Warwiyim, te erne matek leyen  
bulmakau etemri a abetem  
yubuk yewon rasem.



Tatame eme tuknabe ake eisau erne tame  
nogwape wurin pelawom, eke epe nenlawoyim,  
epe bulmakau etemri akek yin  
temenem, te yen  
etek warwiyim.



Sipsip lakerebetem tame eme Betlehem kom sag ep  
yekwo wurik temenem, neirke eme emri sipsip etek  
lakerebetem. Lakerebetem, Keryen  
God ere eteri kom tame

wuri erne  
won  
etemne yim.  
Won yim, eme  
tukap ✦

tobukem eme  
lam, eme  
kenake akem.



Akem, God eri kom tame ere emne etep wom. Kem  
mane akte. Metye. An kemne tuma yenbo wusoute  
yawo. Ari wote tuma tatame  
nogwape eme pap yenbo  
ten

metekwaste.  
Gwopte neir  
ta wuri te

Devit eteri komke  
yen warwiwo.  
Yuri ete yen ere  
kemne sene pette.



Eri sig Aneyen Kraais. Kem yin etepke late. Nawo te  
erne matek leiwo rasten. Ere bulmakau a abe yubuk  
tuknaten. Kem etep late, kem ari  
wobe tuma sene abon etep  
wote. Eri  
woye tuma  
e seken.



Etep womke, agetage God eri kom tame  
nogwapewai eme wuri eterken yan  
temenem, eme God erne tuma yenbo



wom, eme eri sig  
eisau wobetem.



Eme etep wobetem. God ere Hevenke tetan, ere yenbowai. Nowselke tetan tatame emne God ere emne kobo



labe, tatame eme  
noub site.  
Etep wom.



God eteri kom tame eme sipsip  
lakerebetem tame emne mesginin eme  
God eteri kom Hevenke sene yim. Yimke,  
sipsip lakerebetem tame eme etep wom.  
Nema ape yi.



Aneyen ere nemne woye wos nema  
Betlehem komke yin late. Etep won, eme  
agetage yin lam, Mariaken Josepken epe  
etek temenem. Yen ere bulmakau etemri  
a abe yubuk tuknamenem.



Tuknamenem, eme etep lan woran God  
eteri kom tame eter yan wom tuma eme  
tatame emne etepke wusoubetem.



Maria te Jisas erne  
Betlehem komke  
warwiyim. Betlehem  
kom e Judia  
distrikke  
tetan. Herot

eter ere apeilake temenem  
yabelke Maria te Jisas erne  
warwiyim. Warwiyim, yuri  
porereken tame eme yabel  
wayebe emiri tame, eme  
Jerusalem etek yam.



Yamke, eme etep  
wometem. Yen  
geibele wuri  
warwiyim, yuri ere  
Juda tatame  
etemri

keryen tete. Ere mak tetan?  
Nema yuke laye. Yu eri puspas  
nema iyalek laye. Nema yawo,  
nema eterne sukye woran gulke  
pate yawo. Etep wom.



Eme Herot erne etep  
womke, ere yabel waye  
emiri porereken tame  
emne wopeten emne  
tuma elen etep wolam.  
Makapke kem ete yu lam?  
Eme erne awosein womke,  
ere emne won Betlehemke  
yim.



Ere emne etep wom. Kem  
erne noub sopen yin late.  
Ete yen kem late, kem  
ane tuma wopeteyate.  
An kir yin erne gulke  
pate. Etep wom, ere  
emne tuma me  
yikwokwom.



Eme Apeilake Herot eri tuma meten yim. Emri kiyi  
lam yu, eme yabel wayebe emik lam, sene eme lam,  
yu ere taresin yin yen eter  
temenem ake mekinke yin tem.  
Eme akek yin wurin lam, yen  
ere nawo Mariaken epe etek  
temenem.



Lan eme gulke pan sukye woran, eme emri ayer peten  
ayerke yewomenem wos liken newom. Eme erne kelken  
bos yenbo yabe ei subukap wos,  
bosken kwar erne etep newom.  
Newon sene eme nugsi  
tuknalam, God ere emne etep  
wom.



Kem Herot ere tetan emi kem mane ete keluke sene  
yite. Etep womke, eme akeite keluke sene  
yin etemri komke yim.



Eme yimke, God eri komri  
tame ere yan Josep erne  
nugsik terekwunen etep wom.  
Herot ere yen pen sate  
wobe. Eke ne yenken  
nawoken epne panen  
kantri Isipke amen yite.  
Ne etek yin temente.  
Yuri an nene sene  
wotek, kem

sene yate.



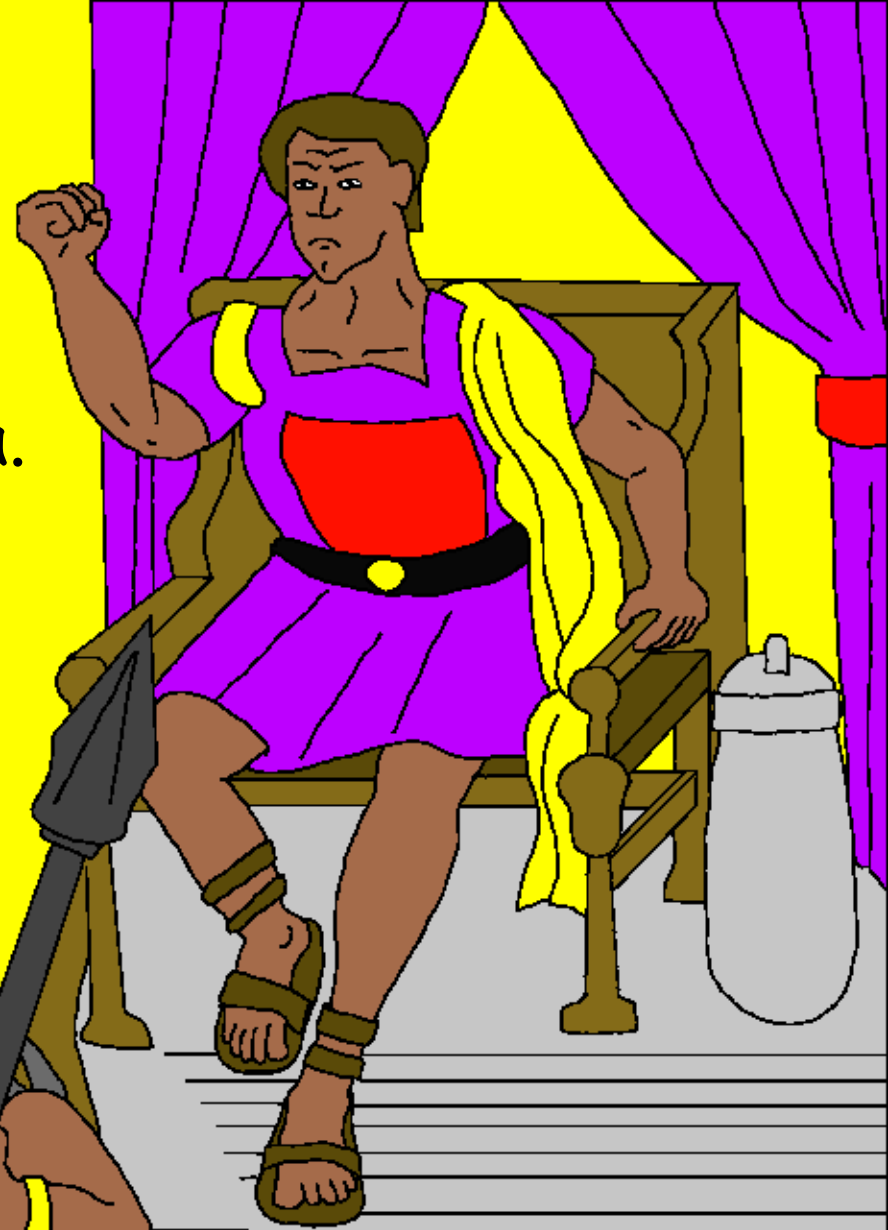
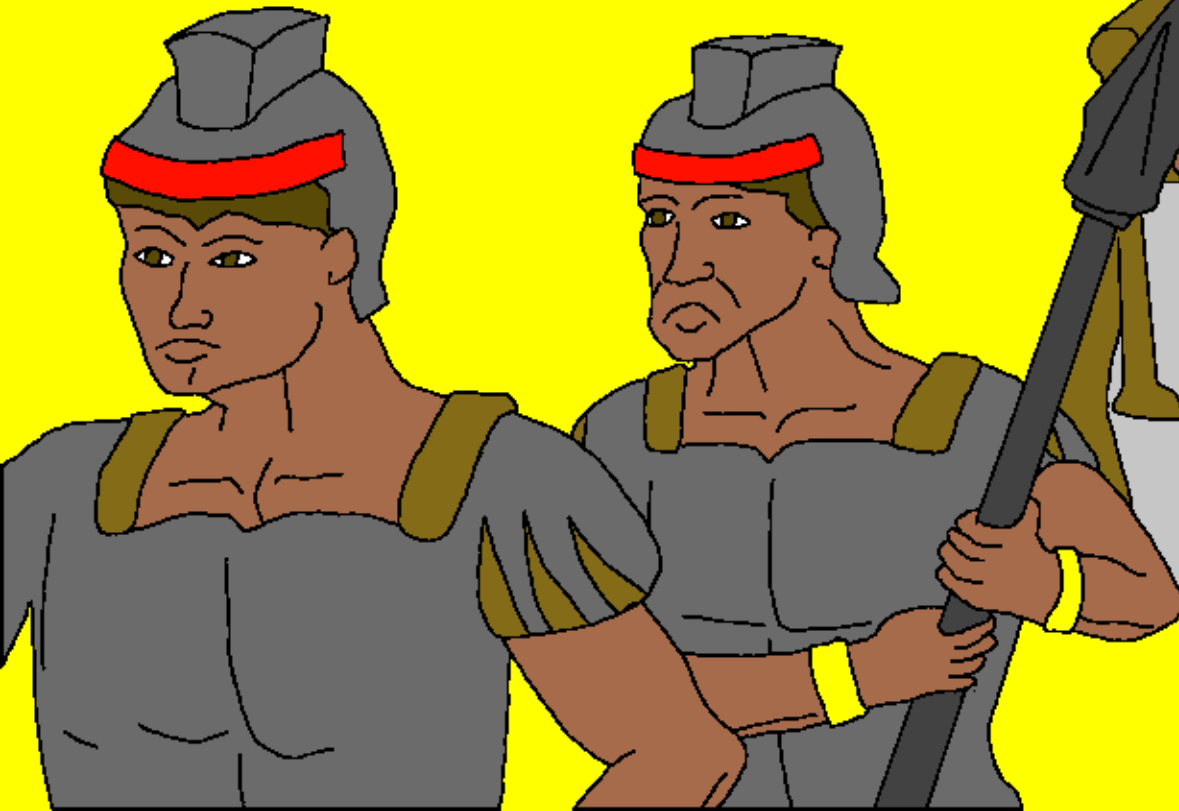
Etep womke, Josep ere wayen  
ere yentaken epne panen  
neirke berasen kantri Isipke  
yim. Yim, Josep ere Isipke  
temenem, Herot ere samke,  
eme sene yam. Etepkap,  
Keryen God eri tuma  
wusoubetem tame  
eteri tuma ere seken  
tem.



God ere erne wom, ere God  
eri wom tuma etep bas rasem.  
Ari taureyen ere kantri  
Isipke temente, an erne  
sene won yate. Etep bas  
rasem.



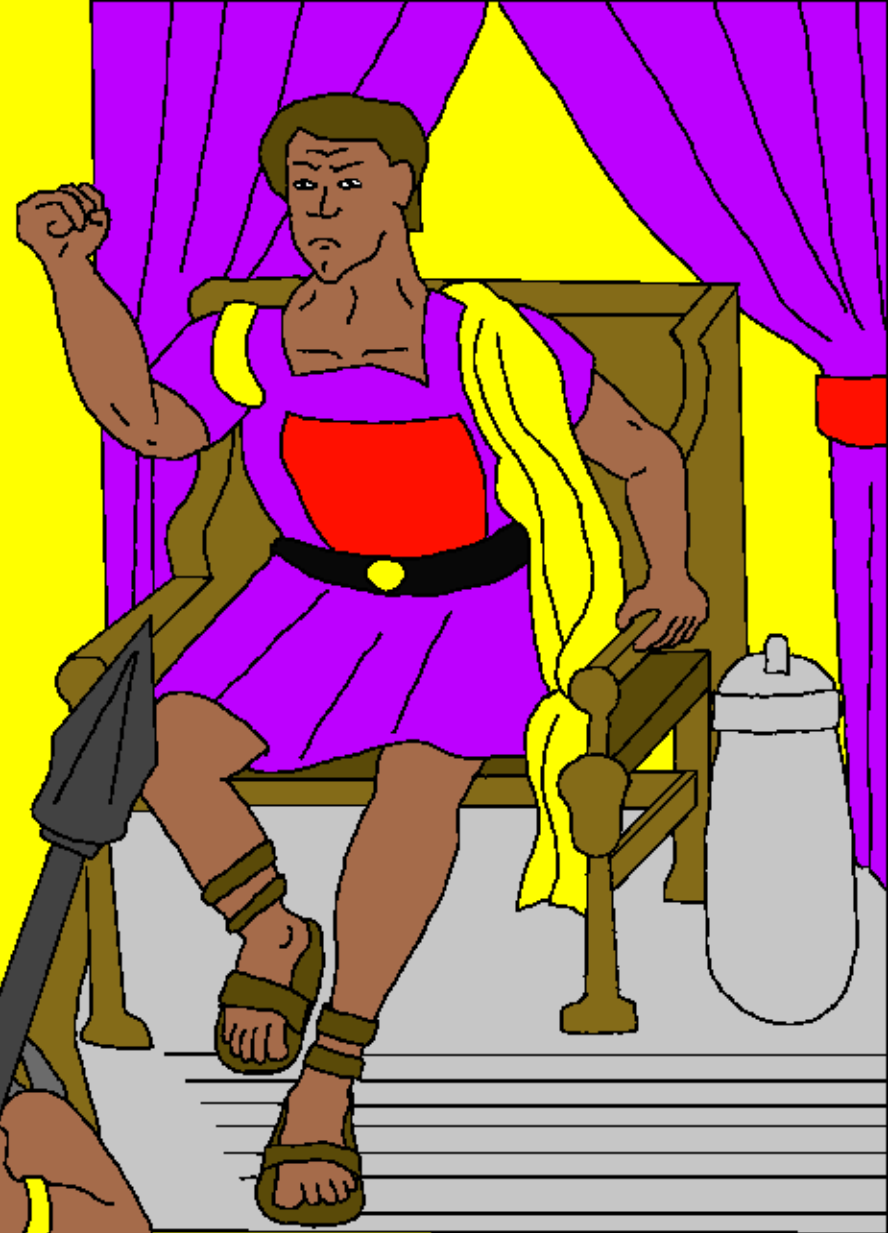
Herot ere metem, iyale  
yekwok yam porereken tame  
eme erne sene beke yin la.  
Ere meten, ere etep abom.  
Eme sene ane beke kip yan la.  
Eme arene me yikwokwom.



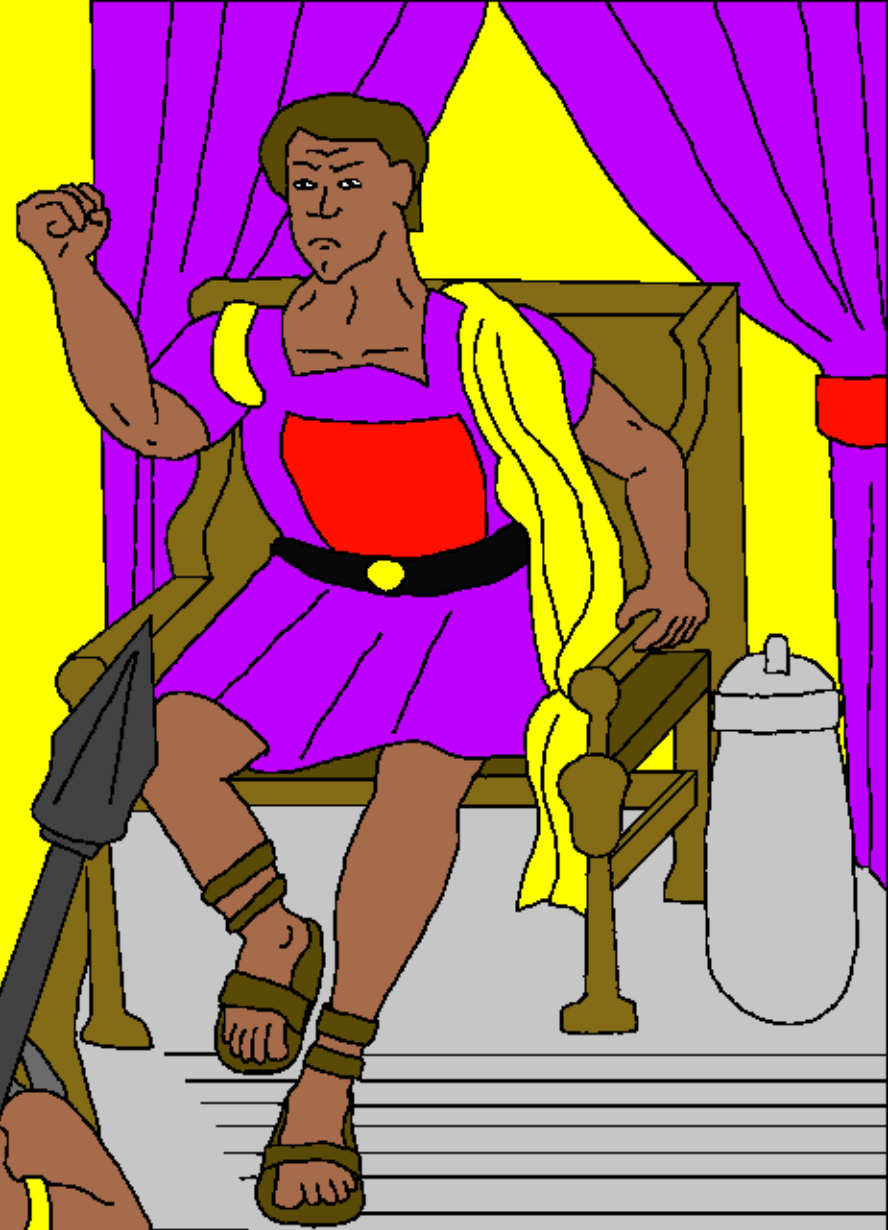
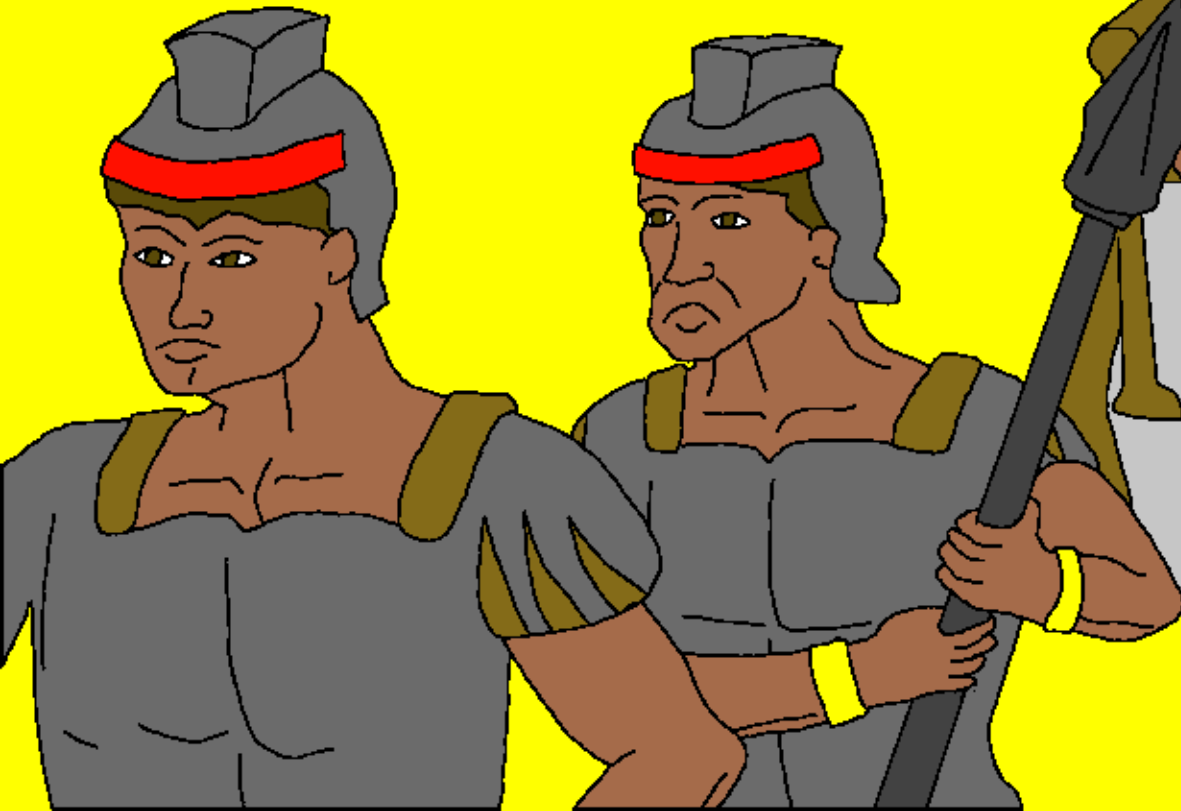
Etepike abon, ere pap wayen,  
ere tame kau emne won yim,  
Betlehem komken akeite  
mekinke tetan komken Rama  
komken emne etek won yim.


Yim, eme nabe pes tem  
taureyenken geibele

yenken  
emne  
pen  
saiwom.



Porereken tame eme Herot  
erne kiyi etep wom. Kiyi  
nema yu lan yam, nabe pes  
nema keluke yam. Etep wom.  
Eke eme nabe pes wom yen  
emne pen saiwom.



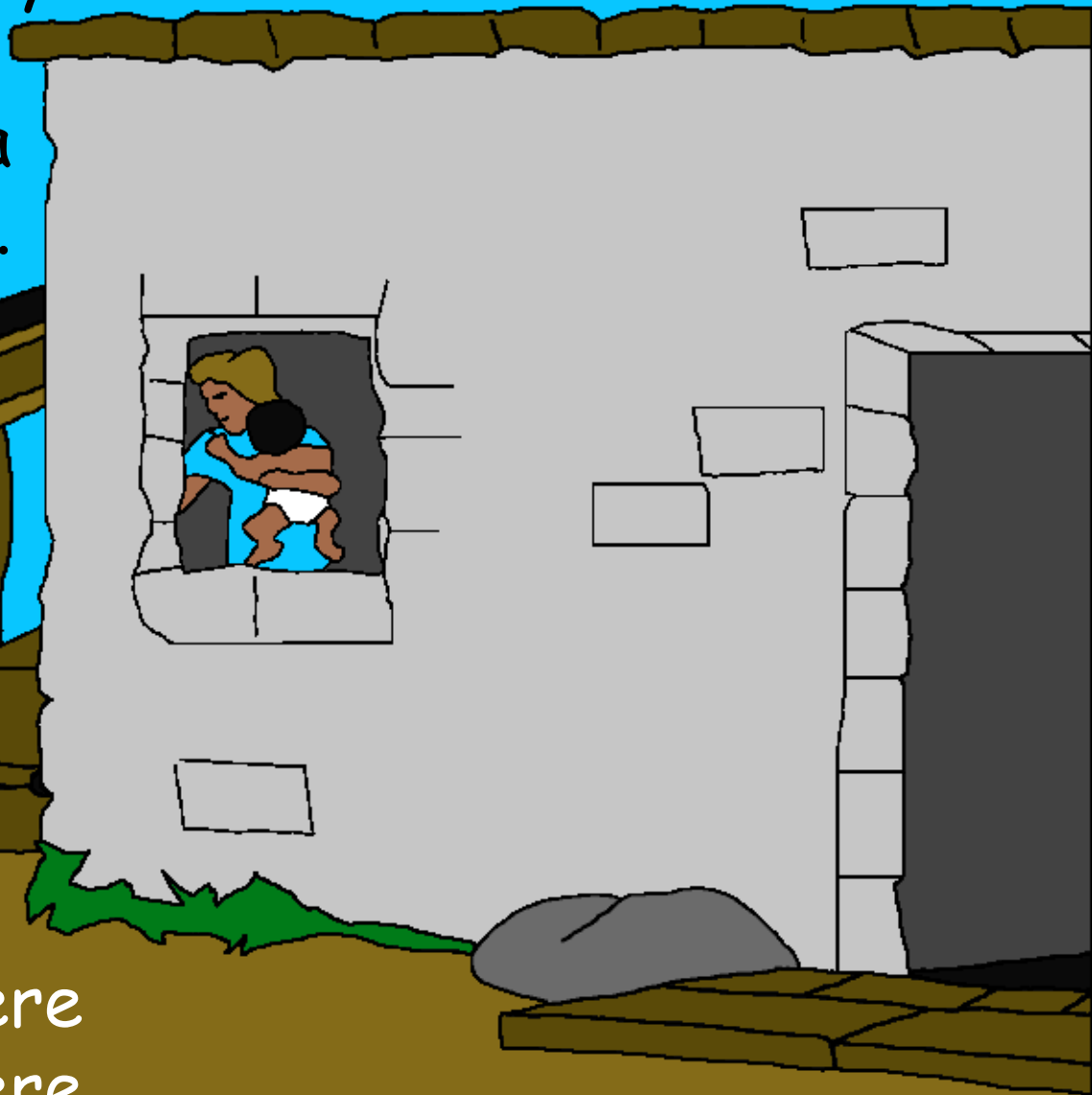


Yuri Herot ere samke,  
Josep ere kantri Isipke  
temenem, ere nugsi sene  
tuknalam, God eri komri  
tame ere erne etep wom.

Ne wayen neri  
yentaken panen kantri  
Israelke sene yite.  
Yen pen sabetem tame  
ere sam.



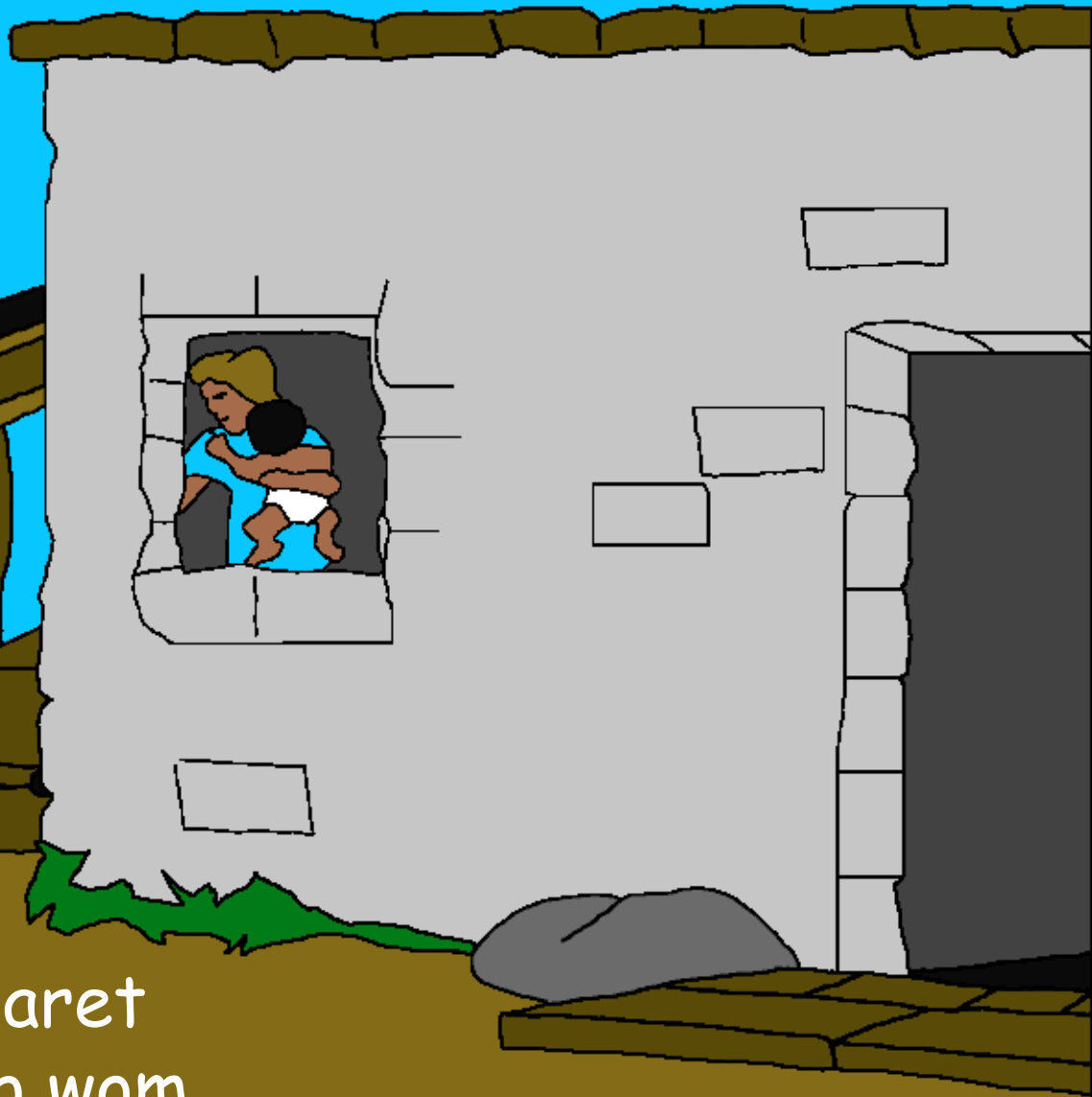
Ere metem, Herot eri yen  
Arkelaus ere a eri  
yaku petem, ere Judia  
distrikri apeilake tem.  
Etep metem, ere  
Judiak



tete mo wom, ere me  
akem. Me akem, God ere  
erne terekwunemke, ere  
Galili distrikke yim.



Yim, ere Nasaret komke  
yin tem. Etep tem,  
tuma wusoubetem  
tame emri kiwi wom  
tuma ere seken



tem. Ere etep wom.  
Tatame eme erne Nasaret  
komri tame wote. Etep wom.



God ere gwote nowselke tetan tatame  
emne pap noub yewom, ere Eteri Yen  
wurisubuwai erne won yam, ere gwote  
nowselri tatame emne kobo lan sam.  
Sam, tatame eme erne kenawaike  
abote, eme yaper beke kip  
te, eme som noub  
temente.



Rom 3:23 Metye. Tatame akei eme kir nenbe, eme wule yaper nenbe. God eter womkap eme beke nen, eme God eteri kom mapeke kip yi?

Rom 6:23 Wule yaper nenbe tatame emri tokwo etepkap. Eme me san yaper som temente nenbe. God erne kenawaike abobe tatame God ere emne wos yenbo bepou me newobe. Ete wos e gwopkap. Eme neremri Aneyen Jisas Kraiss eterken tetan, eme som noub temente nenbe.

Hibru 9:27 God ere etep wom. Tatame nogwape eme tewo wurik sate, sene an emne tuma namdete. Etep wom.

Efesus 2:8,9 Kem Kraiss erne kenawaike abobe, eke God ere kemne kobo lan kemne sene petem. Kem yaku wuri beke nen. God eteri porerek ere kemne sene petem. Tatame eme yaku wuri beke kere, eke eme sig maima eisau mapeke wote.



Rom 10:9,10 Metye. Kem keremri elemoike etep wote.  
Jisas ere Aneyen. Etep won kem keremri porerek  
kenawaike etep abote. Jisas ere sam, God ere erne wou  
sene newom, ere sele meike sene wayen yim. Kem etep  
won etep abote, God ere kemne peten eteri komke panen  
yite, kem noub temente nenbe. Tatame eme etemri  
selpapke kenawaike abobe, ete tatame emne God ere  
etep wobe. Kem areri tatame yenbo. Etep wobe. Tatame  
eme etep wobe. Jisas ere Aneyen. Etep wobe, God ere  
ete tatame emne peten eteri komke panen yite, eme  
noub temente nenbe.



Jon 3:16,17 God ere gwote nowselke tetan tatame emne pap noub yewom, ere Eteri Yen wurisubuwai erne won yam, ere gwote nowselri tatame emne kobo lan sam. Sam, tatame eme erne kenawaike abote, eme yaper beke kip te, eme som noub temente. God ere Eteri Yen erne won yam, ere tatame etemne tuma namde beke ya. Ere emne sene pette, eme som noub tete eke yam.

1 Jon 5:11-13 God ere wobe tuma seken ere gwo. God ere nemne sene pette, nema noub som temente. Eteri Yen eterke nema noub som temente. Eteri Yen eterken tetan tatame eme noub som temente nenbe. God Eteri Yen eterken beke te tatame eme noub som beke kip te. Kem God Eteri Yen erne kenawaike abobe tatame, kem noub som temente nenbe. Kem etep noub mette, eke an kemne etep bas rasbe.



# Matyu 1-2; Luk 1-2

Storyline by: Edward D. Hughes

Illustrated by: M. Maillot  
and Alastair Paterson

Adapted by: E. Frischbutter; Sarah S.

Yessan Mayo Yawua NT (yss) © 1996, Wycliffe Bible  
Translators, Inc. All rights reserved.

<https://www.bible.com/bible/1093/MAT.1>

©2025 Bible for Children, Inc.

[www.M1914.org](http://www.M1914.org)

[www.bibleforchildren.org](http://www.bibleforchildren.org)

