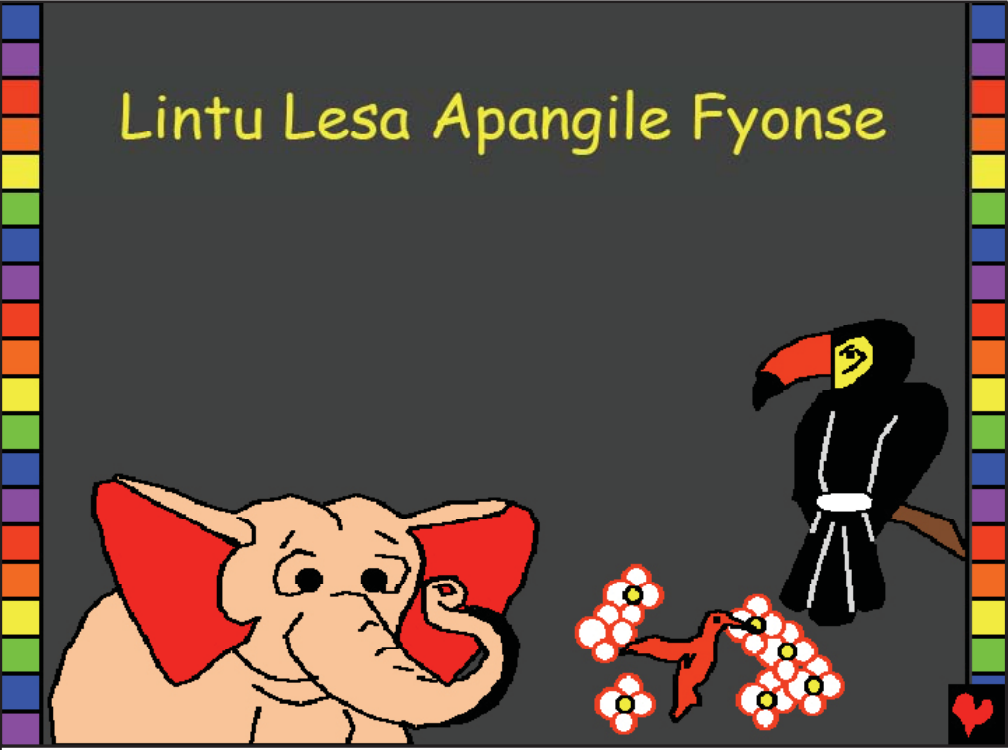




<p>Lintu Lesa Apangile Fyonse</p> <p>Ilyashi ukufumina mu cebo cakwa Lesa, Icipingo, isangwa mu Ukutendeka 1-2</p> <p>"Pakwingila pa cebo cenu cipela ulubuto." Amalumbo 119:130</p>			
		<p>Calilembwa na Edward Hughes Uwalangilishe Byron Unger; Lazarus</p> <p>Abapilibwile Phiri Williams Yasendwa na Bob Davies; Tammy S.</p> <p>Ilyashi 1 ya ishili 60</p> <p>M1914.org</p> <p>Bible for Children, PO Box 3, Winnipeg MB R3C 2G1 Canada</p> <p>Kupoke nsambu: Mwalikwata nsambu uku senda no ku printa ilyashi ili, cikulu mwikashitisha.</p>	
<p>Lesa alishiba twalicitwa ifintu ifibi, eflyo eta ulubembu. Ukupanikwa kwa lubembu ni mfwa.</p> <p>Lesa alitutemwa nganshi alitumine umwana wakwe eka, Yesu, ukufwila palupanda nokulipila ukupanikwa kwesu. Yesu alibuka nakabili alibwekela Kumulu! Eico Lesa kuti atwelela imembu shesu.</p> <p>Nga mulekabala ukufuma kumembu shenu, soseni ifi kuli Lesa: Mwe Lesa, nasubila Yesu afwilile ine kabili alimumi palilelo. Ingileni mumweo wandi no kwelela imembu shandi, ukuti mbe nobumi ubupya kabili nkabe nenu umuyayaya. Ngafweni ukwikalila imwe ngo mwana wenu. Amen. Yohane 3:16</p> <p>Belengeni icipingo no kulanda na Lesa cila bushikul</p>	<p>Bemba</p>	<p>Ninani watupangile? Icipingo, ishiwi lya kwa Lesa, ilanda ifyo abantu batendeki. Akale Lesa apangile umuntu wakubalilapo no kumwinika ishina lya kuti Adam.</p>  <p>1</p>	<p>Lesa abumbile Adam ukufuma kwi loba. Lintu Lesa aputilemo umweo muli Adam alisaba umumi. Aisangile mwibala ilyaleitwa Eden.</p>  <p>2</p>

Apo talapanga Adam, Lesa apangile icalo no kubikamo ifintu ifisuma nganshi. Panono panono Lesa abumbile impili, ne bemba, amaluba ne miti. Ifyuni ne nshimu, Ifisabi ifikulu, ne fikono. Mucishinka, Lesa apangile fyonse ifyabako- fyonse fye.



3

Mukutendeka elyo Lesa talati apange iciliconse takwali kantu ukupatulako Lesa. Takwali abantu, incende nangula ifintu fimbi. Takwali ulubuto nangula imfimi, takwali pamulu nangula panshi. Takwali mailo nangula ilelo kwalifye Lesa ekafye uushakwata ntendekelo. Lesa acitilepo fimo! Pakutendeka, Lesa abumbile imyulu ne sonde.



4

Kabili icalo tacakwete imibele iiliyonse. Kabili imfimi yali tebelele icalo conse. Lesa alisosele. "Nakube ulubuto."



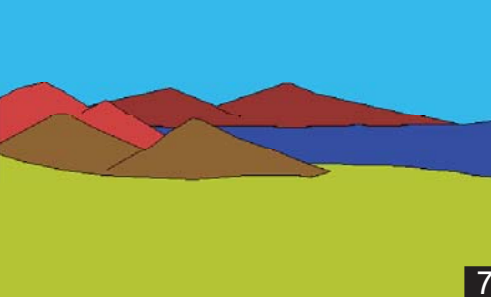
5

Kabili kwalisaba ulubuto. Lesa ainike ulubuto ukutila akasuba elyo imfimi atile ubushiku. Elyo kwalisaba icungulo no lucelo ubushiku bwakutendeka.



6

Pa bushiku bwacibili, Lesa abikile amenshi muli bemba. Pa bushiku bwacitatu, Lesa atile, "Nakumoneke umushili uwauma." Kabili calicitike.



7

Kabili Lesa aebele ukutla icani, amaluba ne miti fimoneke. Kabili fyalimoneke. Elyo kwaba icungulo nolucelo ukulenga inshiku ya citatu.



8

Elyo nomba Lesa apangile akasuba, umweshi ne ntanda ishingi ishakuti takwaba uungapenda. Elyo kwaba icungulo nolucelo ukulenga inshiku shine.



9

Ifilengwa na Lesa ifya mumenshi, amasabi, ifyuni efya konkelepo pa butantiko bwa kwa Lesa. Pabushiku bwalenga shisano apangile amasabi ayakalamba notunono, ifyuni ifikalamba notunono. Lesa apangile amasabi ayapusana-pusana no kuyabika mu menshi ukutla fileyangala mumenshi na mulwelele ye sonde lyonse. Elyo kwaba icungulo no lucelo ubushiku bwalenga shisano.



10

Ukufuma apo, Lesa alisosele nakabili. Atile, "Isonde nalipele ifilengwa ifyuni..." Inama ishapisana pusana shonse, utushishi na fimbi fyalimoneke. Ekwali insofu ishikulu na imoo. Ba kolwe, ing'wena ne imyambo nefyongoli. Inama ishapisana-pusana shonse ashipangile pali ubu bushiku Lesa. Kabili icungulo no lucelo ukulenga inshiku shisanu na bumo.



11

Lesa alicitile icintu cimbi pa bushiku kwalenga shisano na bumo. Icintu icaibela nganshi. Fyonse fyali ifya pekanishiwa pa muntu. Kwali ifyakulya mumabala, ne nama isha kumubombela.



12

Elyo Lesa atile, "Natupange umuntu mucipasho cesu. Mukuti alebaka fyonse ifili pesonde." EICO LESA ALI BUMBILE UMUNTU MUCIPASHO CAKWE; MUCIPASHO CAKWALESA ALI MUBUMBILE ENA ...



13

Lesa alilandile na Adam. "Lyeni ifyo mungatemwa mwibala. Lelo tekweshu ukulya kucimuti icilenga ukwishiba icisuma ne cibi. Ubushiku ukalyako ukafwa icine cine."



14

Kabili Imfumu Lesa atile, "Tecisuma ukuti umuntu abe eka. Nalapanga uwakumwafwilisha." Lesa aletele ifyuni fyonse ne nama kuli Adam. Adam alifipele amashina fyonse.



15

Afwile ali uwacenzela pakucita icintu ca musango uyu. Lelo pa fyuni ne finama fyonse tapali nelyo cimo icabanga Adam.



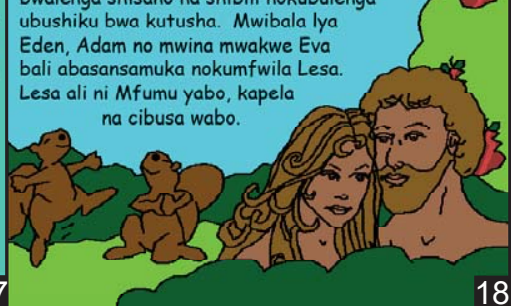
16

Lesa alilalike Adam utulo. Mu muntu uulele Lesa alibulamo ulubafu nokupanga umwanakashi, Mulubafu lwakwa Adam apangile umwanakashi. Lesa apangile ewalifye uwalinga ukwampama na Adam.



17

Lesa abumbile fyonse munshiku shisanu na bumo. Elyo Lesa alibupalile ubushiku bwalenga shisano na shibili nokubulenga ubushiku bwa kutusha. Mwibala lya Eden, Adam no mwina mwakwe Eva bali abasansamuka nokumfwila Lesa. Lesa ali ni Mfumu yabo, kapela na cibusa wabo.



18