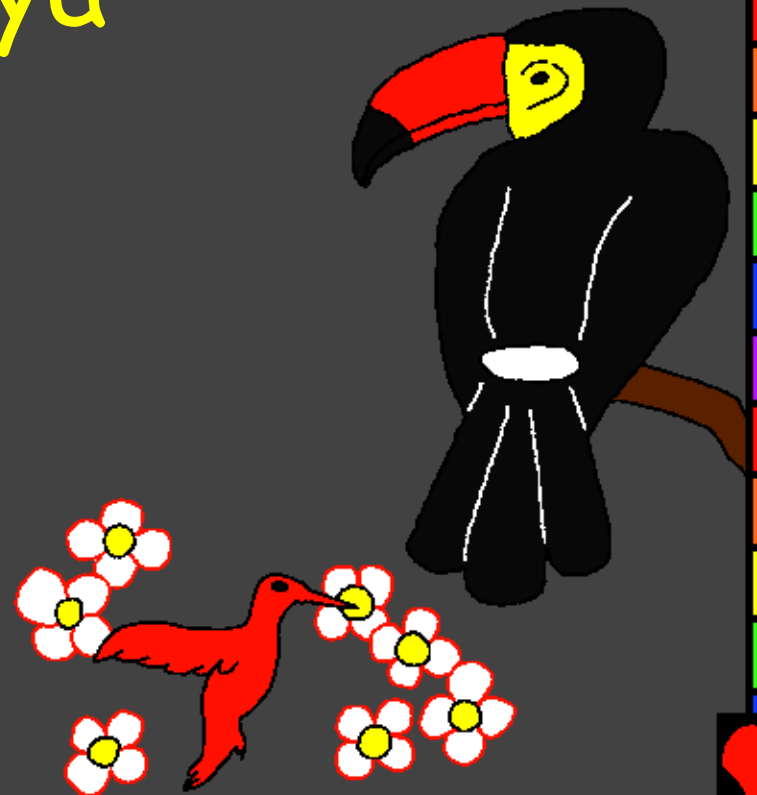
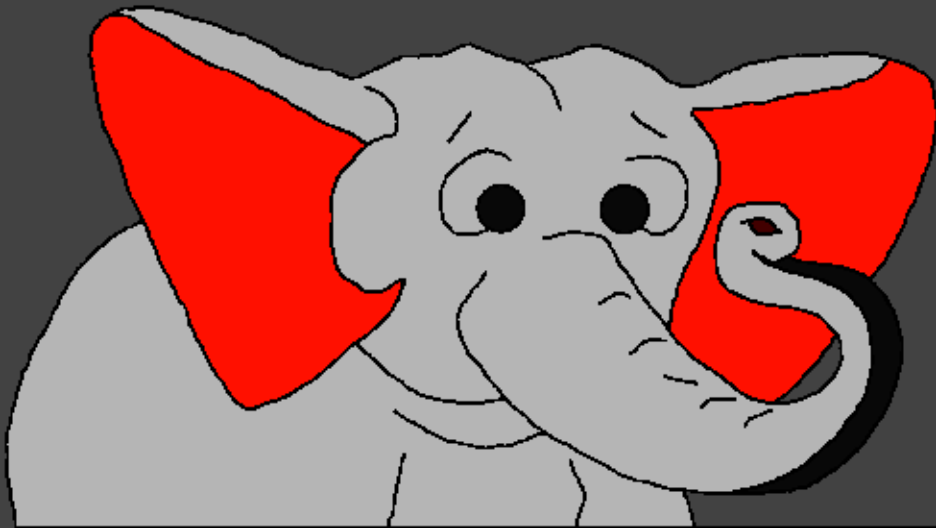


Littafi Abi nya
tnunceyi

Esa n Shekwoyi
Bei zhin Anya
vinya nyi



Aka yi: Edward Hughes

Awu yi: Byron Unger; Lazarus
Alastair Paterson

Ago yi: Bob Davies; Tammy S.

Agogna yi: www.christian-translation.com

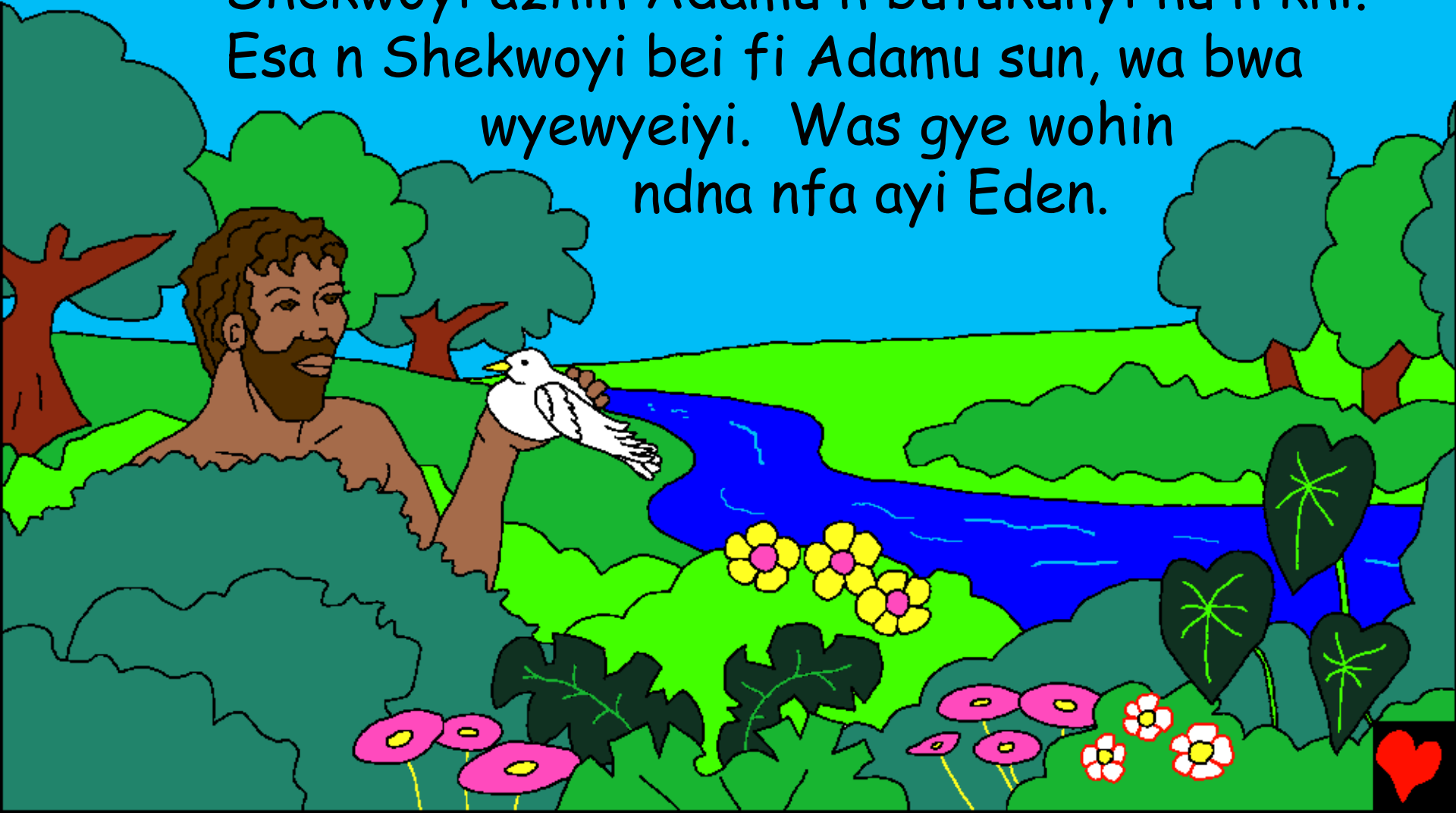
Aza nba zhinko: Bible for Children
www.M1914.org

©2021 Bible for Children, Inc.

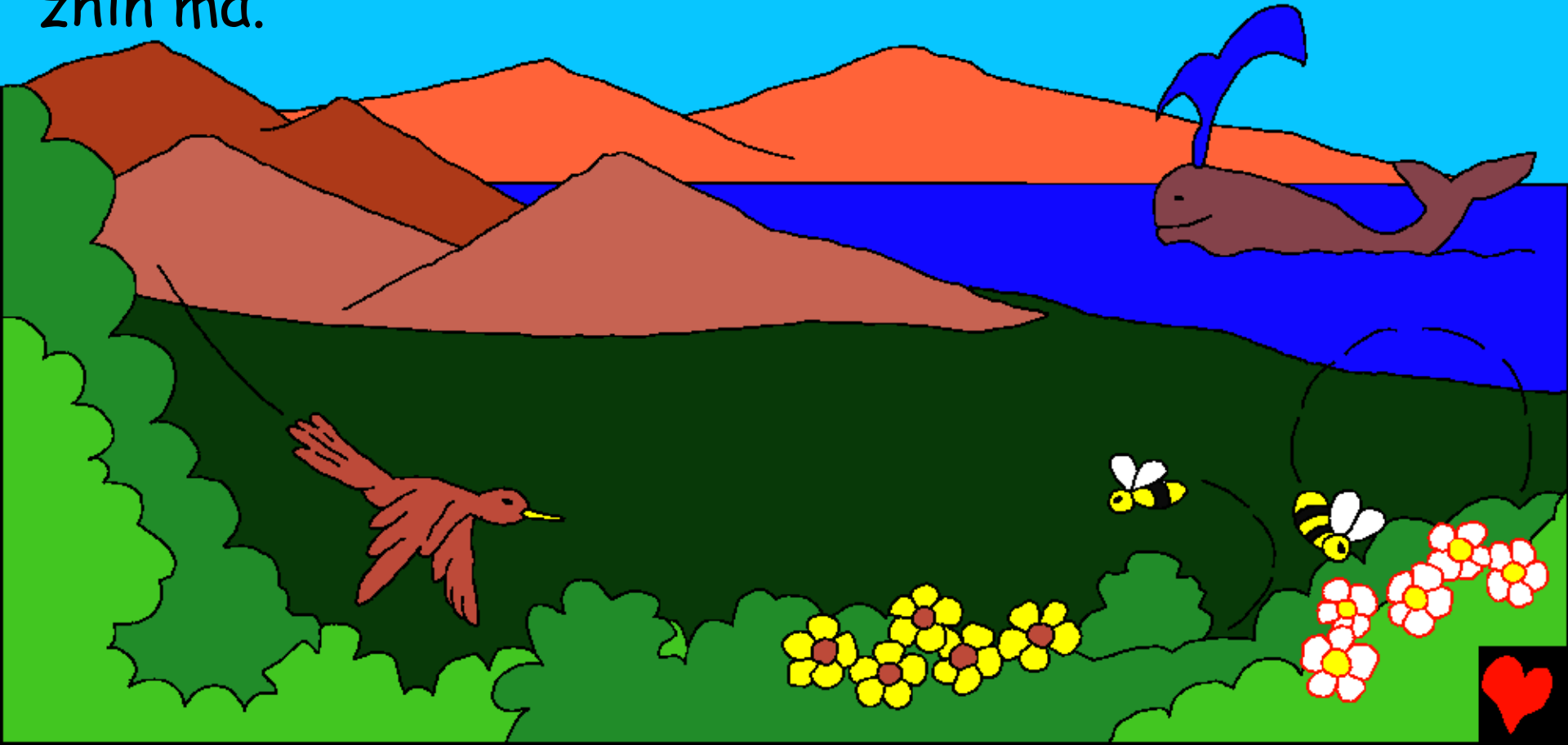
Dama: Ho yenchi lo ha kpan ko ha lu nabagyi ye,
ndeï nho to ye hakun nu.



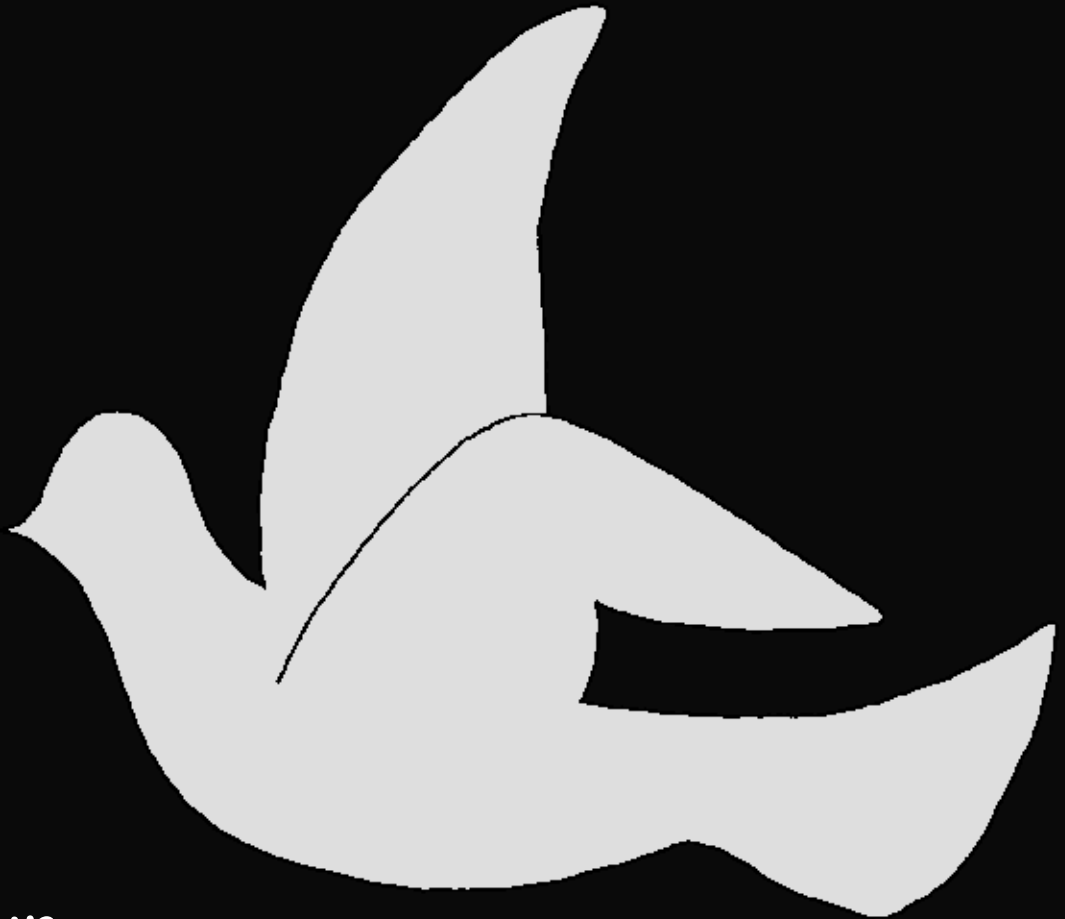
Nyi ka nu Bei zhin ya? Littafi, Shekwoyi Beda,
dayi shi zayinkochi Asaseba bei ya. Tunyi sapa,
Shekwoyi was zhin oza kmisunyi was tu wo ye Adamu.
Shekwoyi azhin Adamu n butukunyi nu n kni.
Esa n Shekwoyi bei fi Adamu sun, wa bwa
wyewyeiyi. Was gye wohin
ndna nfa ayi Eden.



Kafin Shekwoyi zhin Adamu, Wa zhin anyi manayi nnu na anya wowoyi. Pece-peceyi Shekwoyi Wa zhin a genyi-genyi bedo na abajeyi, amayi mayi manayi bedo na ashunwanyi, alu bedo na osuyi, abyan ayako bedo na akayi. Nlonu, anya vinya, Shekwoyi nu bei zhin ma.



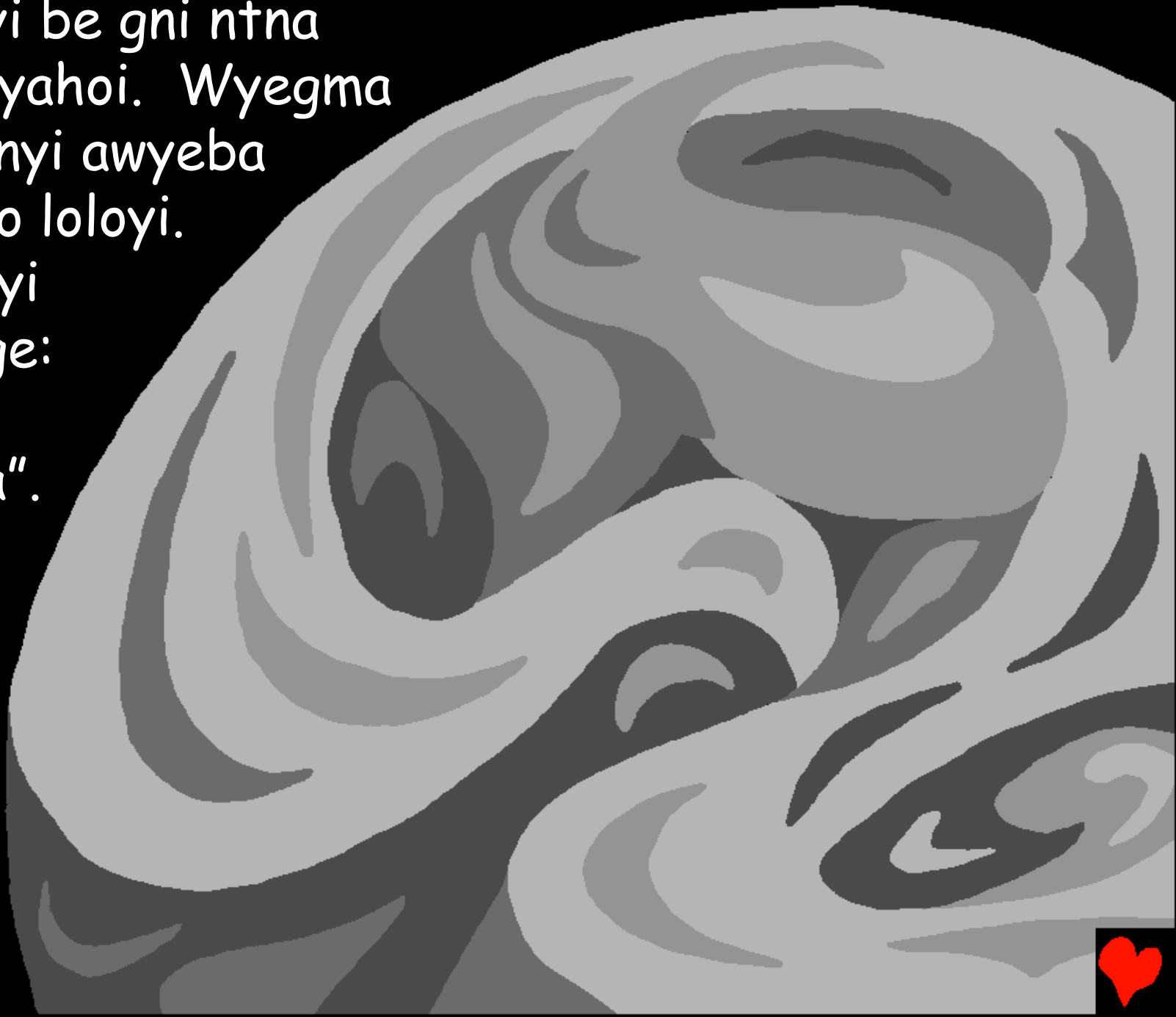
Nkmisunyi, Kafin
Shekwoyi zhin nyaho,
nyaho-nyahoi to be
nyin akpe Shekwoyi.
Aza to bei nyin ko
aban ko anyan. Ko
nyaho. Buzagna ton
bedo wyegma ton.
Eshe bedo nkni ton.
Nsu nkwaduya nyi
ton bedo nsuyi ton.
Shekwoyi nu bei bwasun
nwo to Nkmisunyi lon.
Shekwoyi Wa zhin.



Nkmisunyi, Shekwoyi Wa zhin
eshe bedo nkni nyi.



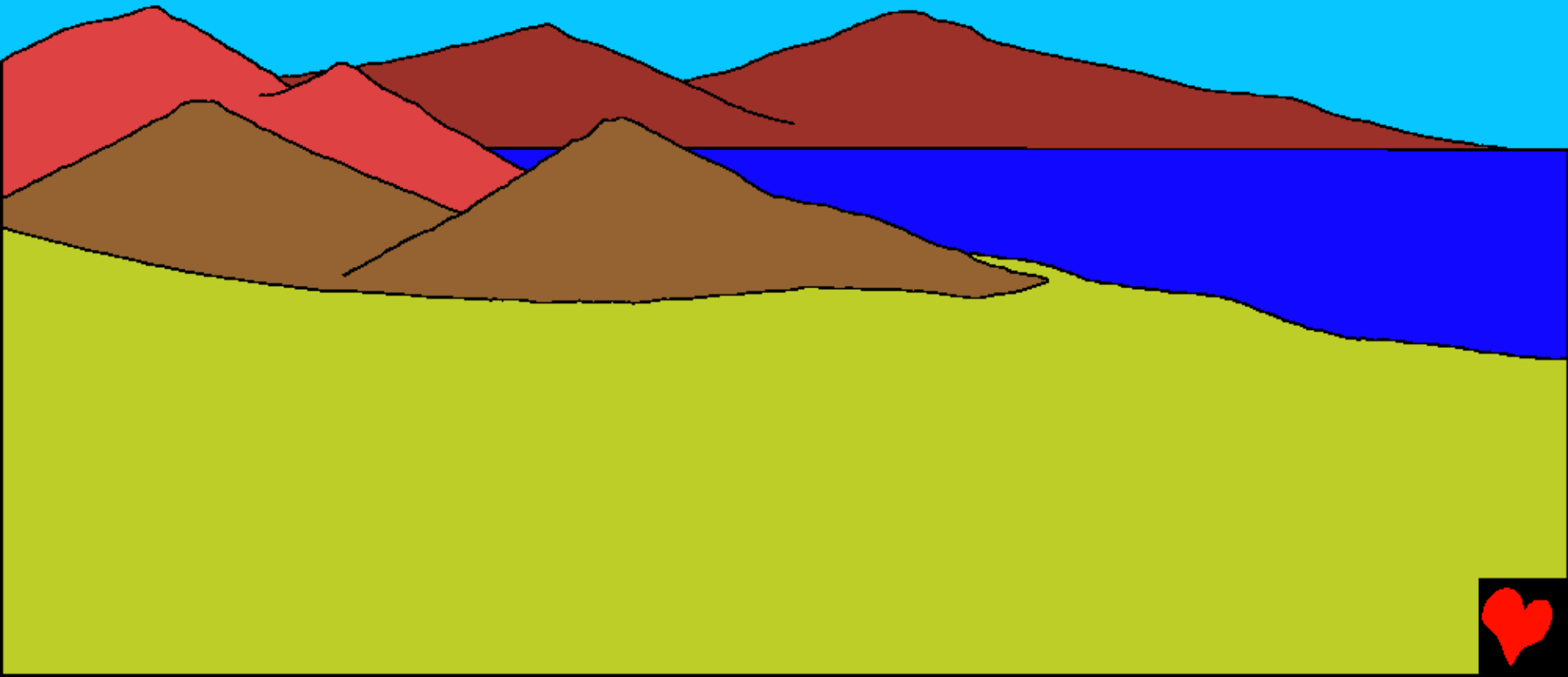
Okni nyi be gni ntna
nyaho-nyahoi. Wyegma
ku pui anyi awyeba
befo nko loloyi.
Shekwoyi
Wa da ge:
"Abwa
Buzagna".



Buzagna kwa be. Shekwoyi ayi ko buzagna Nyipei
bedo wyegma Was yiko suko. Weshe bedo nlabmiyi
Banu bei zhin Nyipei kmisunyi.



Nyipei bayi, Shekwoyi Wa be na anyway gbo-gbo
dna n Eshe sinta. Nyipei tayi, Shekwoyi Wa cige,
"Okni kawu ko zhin". Kwa zhin.



Shekwoyi njesun Wa ga gbe agbegbe bedo
na amamayi, agbegbe tukwo bedo na
ashunwanyì ba kunbe. Weshe
bedo nlabmiyi ba bei
zhin Nyipei tayi nu.



Shekwoyi Wa zhin Nyipei bedo
n pyayi, bedo na akpasuyi nza
tami was ba n. Weshe bedo n
labmiyi kwaze Nyipei kninyi nu.



Anya adna nya bedo
na abmayi n na aluyi
ba nu bei kpe n
Shekwoyi takaida it
up to up up up up
up up. Shekwoyi Wa
zhin obmay yako bedo
na abibiyi na aluyi
gbo-gbo banu anuwa
na anyi ncedo na
aluyi ba dagma nkni
bedo n eshe Abwa
weshe n labmiyi kwa
zhin Nyipei tnuyi.



Bayan ko, Shekwoyi if Wa jebe da. Wa cige,
"Aye Okni kwa be na nya awyewyeiyi." Anyfanya
gbo-gbo ba ze anya wyewyei. Abwa a dagba na
anya ajeyi. Akna nzhe bedo na awyiyi. Anyafa
nya gbo-gbo azhin ba nyipei yi.

Abwa weshe n labmiyi ba zhin nyipei tnayi.



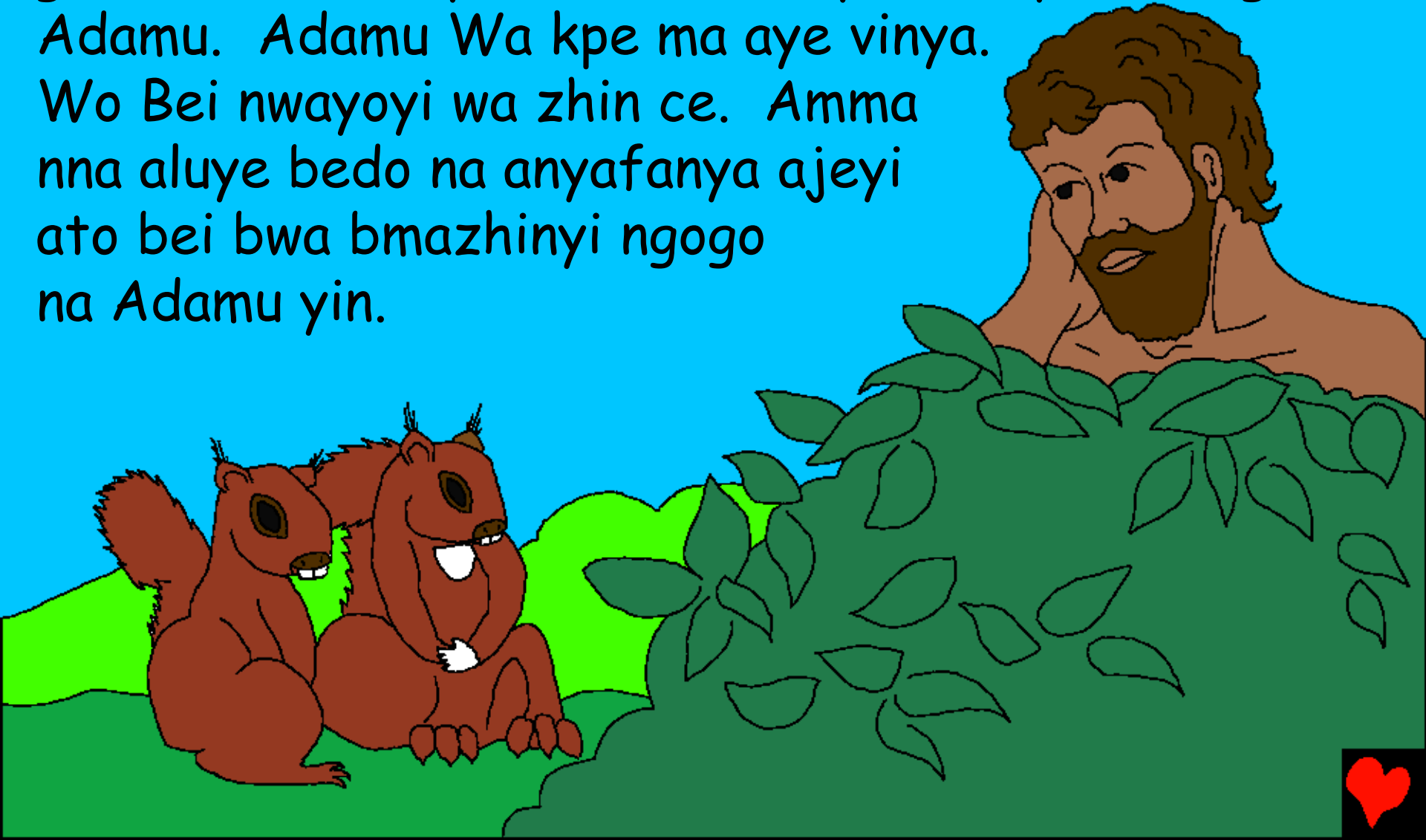
Shekwoyi Wa ku nyahozhin Nyipei tnanyi-nyaho
nkskayi ya. Nyaho-nyahoi bei zhin aba ga Zanugbayi.
Nyagyi Bei nyi n afa bedo anyafanyayi ba lo tnutnu
ga wo. Shekwoyi Wa cige, "Yi belo ya zhin
Zayinkochi nyi degbe. Wa
ze Dagayi tu n na anya
vinya na anyi". NLONU,
SHEKWOYI BEI ZHIN
ZAYINKOCHI
NWO DEGBE, N
SHEKWOYI DEGBE
WA ZHIN WO...



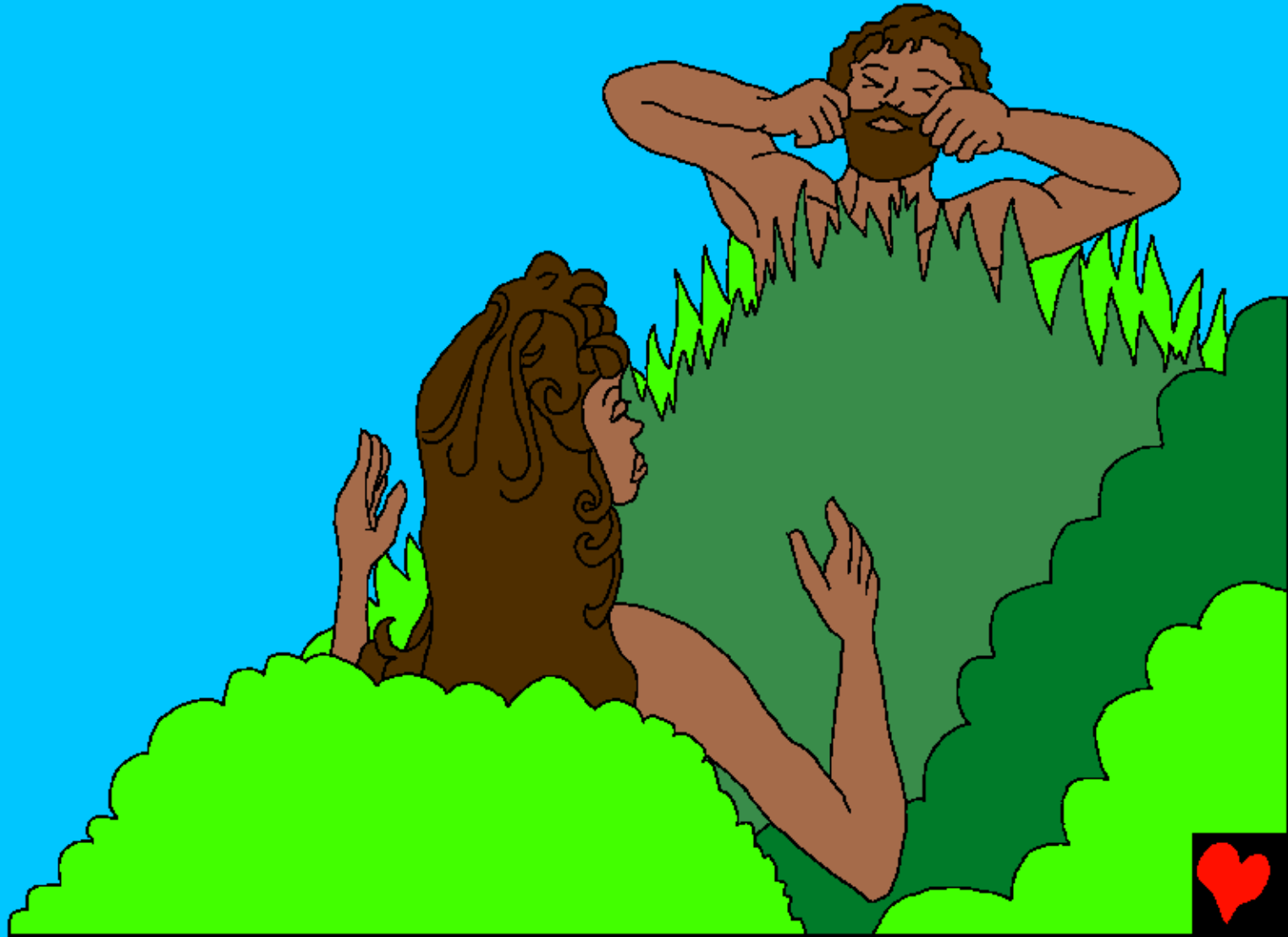
Shekwoyi Wa dabo
na Adamu. "Gyi
nyaho-nyahoi nho n
cepma dna n fa.
Amma to Gyi nu
shunwa beyekpe
manayi n nukwoyin.
N hagi nshunwa
ye hoba fi".



Dagayi Shekwoyi Wa cige, "Ko to bmayilo nge zanugbayi ba gni n wo gmanyin. Nba zhin bmazhin yi ga wo". Shekwoyi Wa be na aluyi ba anyafa he ga Adamu. Adamu Wa kpe ma aye vinya. Wo Bei nwayoyi wa zhin ce. Amma nna aluye bedo na anyafanya ajeyi ato bei bwa bmazhinyi ngogo na Adamu yin.



Shekwoyi Wa be Adamu ngyeyi, ogye nloloyi. Wa kni
zanugbayi bmayi bala, Shekwoyi Wa zhin Nyikoza n
Adamu bmayi bala.



Shekwoyi Wa zhin anya vinya dna Nyipei
tnayi. Nsayi Shekwoyi Wa tu Nyipei tnaba
kwa ze sunsu nyipei. Dna nfa Eden nya,
Adamu bedo n Hawawu yi owo nyiko ba be
ku agmada hinhin bwa ba ga Shekwoyi
biyaya. Shekwoyi nu bei zhin ba
DAGAYI, ba Nyagayi bedo
nba Nukoyi.



Esa n Shekwoyi Bei zhin Anya vinya nyi
Nabagyi nko gbin n Shekwoyi Beda, Littafi,
nko lo nu

Kmisunyi 1-2

"Aduba Oho Abeda nya ga buzagna."
Zabula 119:130



Kpasunyi



Littafi nabagyi dayi Shekwoyi nwa zhin Yi nwo ya kpe Wo ye.

Shekwoyi kpelo nge yiku abo nukoyi zhin,
nWoyi laifi. Tata laufi ye nya konu zhin efi, ama
Shekwoyi ye ho lo nmwa Wo tnu nwo Nugunyi, Yesu wo
fi tu nzundu wo gye azhin ntu nha alaifi bo. Yesu was jeze
be wyewyeiyi Was lo puwa nshemi! Nha ga gaiciya ga Yesu
ha nya Wo nge Wo ze ho alaifi. Wo ba zhin! Wo ma be wa
sase nho nsaiye, ohoi nce ho ba sase nWoi nyalo nya.

Nho la gaiciya ga nge deye zhin gaiciya nu, da deye ga
Shekwoyi: Yesu, mi ngaiciyayi ga nge Ho zhin Shekwoyinu,
hoi ze zayinkoci hoi fi ntu nmi alaifi bo, Hoi nwyewyeiyi
lo njesun. Sukusuku be mi asase ba ha ze emi alaifi,
nabai nba bwa wyewyei woiwoyi nsaiye, nyipeyi gmanyi
nbo kun sun nHoi nyalo nya. Bma mi zhin ma zhin Ho
biyaya ma sase ga Ho nge Oho bi. Amin.

Ba Littafi ha dabo n Shekwoyi fyegy-i-fyegy-i! Yohanna 3:1

