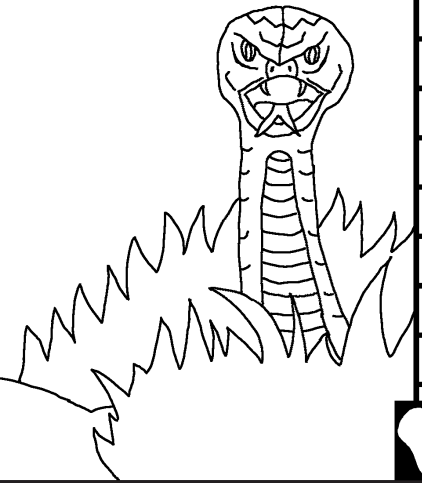


Biblia kwa bhana

Sasa

Mwanzo gwa huzuni gu kabinadamu



Jishijandikwa: Edward Hughes

Michoro na: Byron Unger; Lazarus
Alastair Paterson

Jishiposhelwa: M. Maillot; Tammy S.

Jishitafasiriwa na: www.christian-translation.com

Jishibhelekwa na: Bible for Children
www.M1914.org

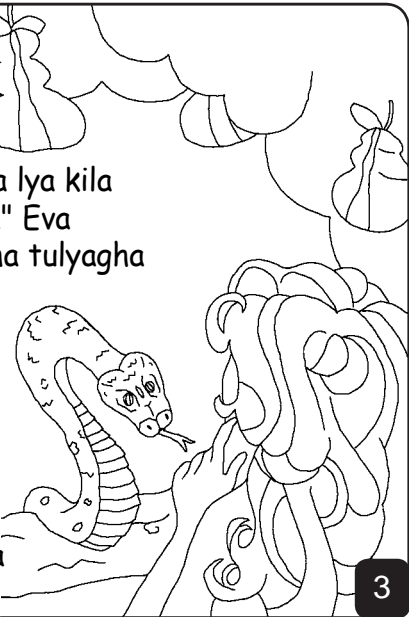
©2021 Bible for Children, Inc.

Leseno: Nchikwala haki ja nakili ngungulilo yeneyi
endapo mwangali lengo ja bhusha.

ASHIPANGANYA
BHANSHIKUUMBA KILA SHINDU!
Ashipanganya kubhang'eta mundu gwa
kwanza, Adamu bhanshinkuumpa
bustani ya Eden yeneyo nakagwe, Eva
Bhanshinkukolanga
nikwajwoghopa Ashipanganya
ni kufurahia
kupagwa kwake
mpaka lyuba
limo...



"Ashipanganya bhanshinkunulila na lye kukoposhela kila nkongo?" Lishetani ashikumuia Eva "ninaweza lya kila utunda ila ngabha limolila" Eva ashinkujangula "Mwanagha tulyagha au kwaya lilalila litunda, shituwe" Nkawanganga, Lishetani Lishinkubheleketa kwa nsisitizo. "Lishamanje tundu Ashipanganya" Eva akulyagha itunda lya pa nkongo. Ashinkupilikanila lishetani gwalile litunda.



3

Baada ja dharau ja amri ja Ashipanganya Eva alikunshawishi Adamu kulya nalakwe. Adamu akakombwele kubheleketa "Hapana ngaweza kwalebha Ashipanganya."



4



Baada ja Adamu na Eva kutenda mashambi bhakwibhonagha bhalinginji bhakonope. Bhakubhangaha maamba na kunibhunishda gha nkongo na kwiiyanga palitinji ili Ashipanganya bhanakubhabhonanga.

5

Shilo Ashipanganya bhashinkwiya bustani, bhashinkumumanya shatendilenje Adamu na Eva. Adamu ashinkungamba Eva, Eva ashinkungamba lishetani. Ashipaanganya gwalugwile "Lishetani lishilaniwa, jwandonya shepate uchungu mudda gwa kola. Adamu pabha shitenda Shambi, dunia jishilaniwa kwa miibha na michongoma.

Shinoleye kwa matukuta shalyashene sha kila shiku."



6

Ashipanganya bhashikwabhinganga Adamu na Eva koposhela ku bustani. Pabha bhashinkutendagha shambi bhakushoywangaga pa bhufalme gwa Ashipanganya.



7

Ashipanganya bhakwalayaga upanga gwa moto ili kwashoyanga, Ashipanganya bakwalayaga lipende jikaadamu na kaeva. Mwanajwabhonje jwa kwanza kaini paliji askari jwa bustani na jwa bhili Abeli paliji mchunga.



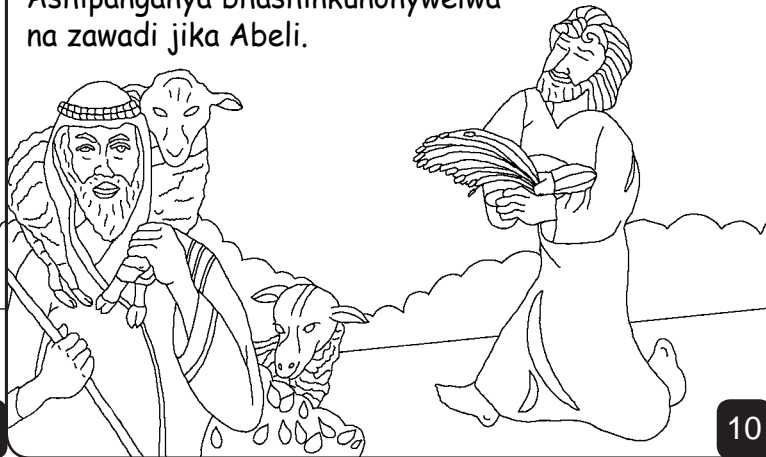
8

Baada ya muda familia jishinkupatikana Kati jika Adamu naka Eva. Mwanagwabhonji jwa kwanza Kaini paliji jwatunza bustani na jwabhili Abeli paliji nchungaji.



9

Lwubha limo Kaini ashinkupeleshela Ashipanganya mbogamboga naka Abeli akupelekagha ngondolo janakana kama zawadi. Ashipanganya bhashinkunonywelwa na zawadi jika Abeli.



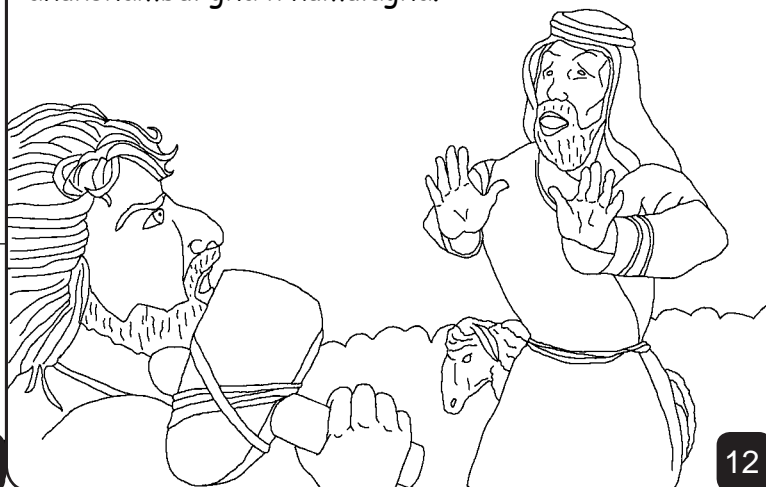
10

Ashipanganya bhangajipunga zawadi jika kaini akutumbalagha. Ashipanganya gwalugwile "Utendagha galigambone, buli shinkanwe?"



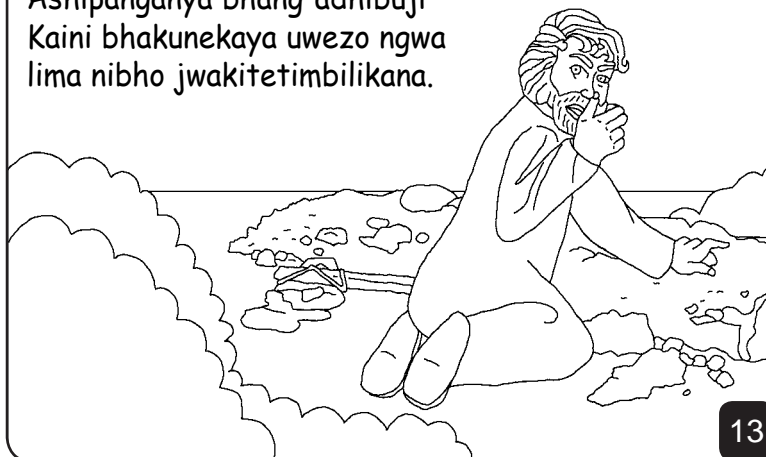
11

Njimo ika kaini yangamala lwubha limo ashikumvizia Abeli akunshambuligha nikumulagha.



12

Ashipanganya bhakubheleketagha na Kaini "kwalikwe mpwako Abeli?" "Kwali" Kaini ashikunamanama "kwani ne ngung'ang'alia Abeli?" Ashipanganya bhang'adhibuji Kaini bhakunekaya uwezo ngwa lima nibho jwakitetimbilikana.



13

Kaini akushobhega pabhufalme gwa Ashipanganya. Bhakulombanywagaga na kamwana jukaadamu na kaeva ili bhaundanje familia. Muda gwa ngupi ubhukulu kakaini na vitukuu bhakubhumbagaya shilambo.



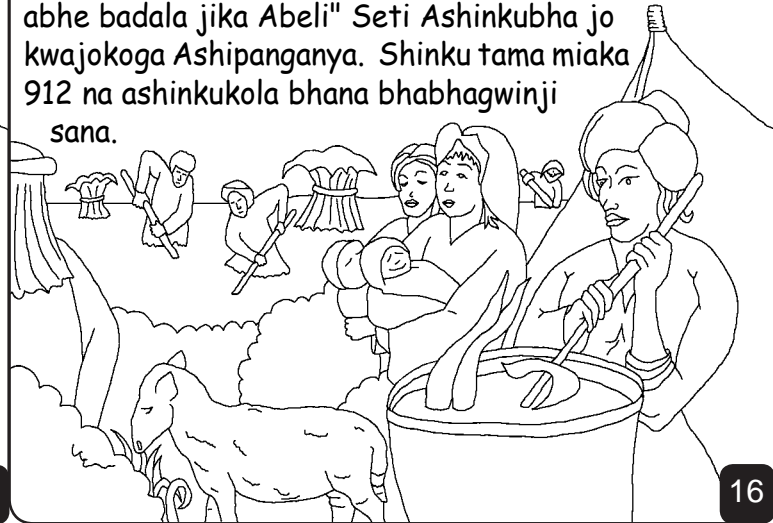
14

Baada ya muda familia jikaadamu na Kaeva jikubhagha jajikulangwa. Bhandu bhanshi kuntamanga muda gwa nehnhu sana tofauti na naino.



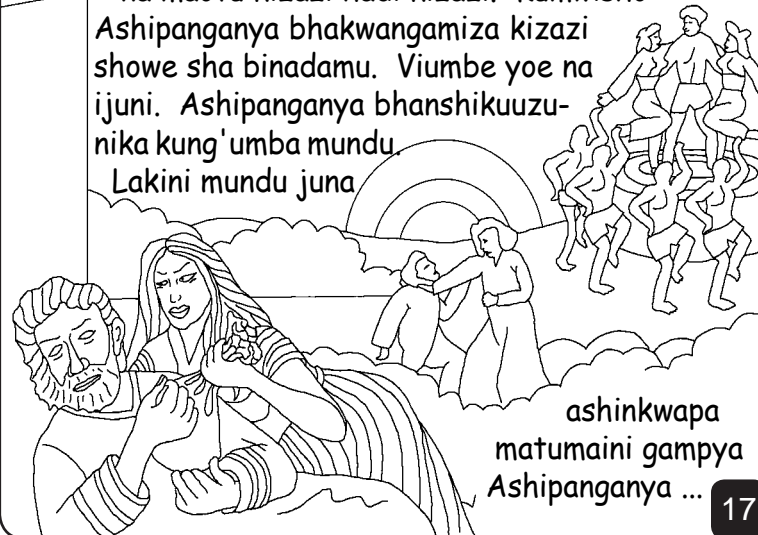
15

Mwanaghwabhonji Seti pabhelekwe, Eva ashikunkutay "Ashipanganya mumtende Seti abhe badala jika Abeli" Seti Ashinkubha jo kwajokoga Ashipanganya. Shinku tama miaka 912 na ashinkukola bhana bhabhagwinji sana.



16

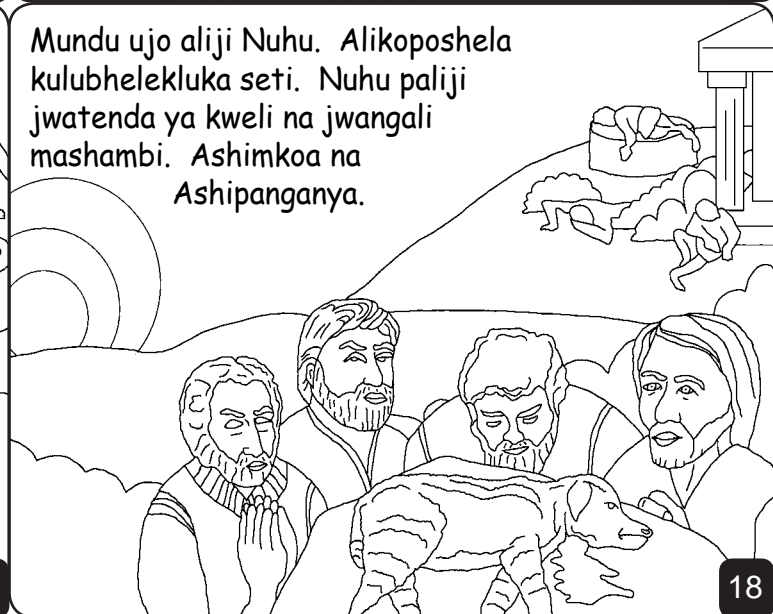
Katika dunia Bhandunje bhanshinkokolanga na maovu kizazi hadi kizazi. Kumwisho Ashipanganya bhakwangamiza kizazi showe sha binadamu. Viumbe yoe na ijuni. Ashipanganya bhanshikuuzu-nika kung'umba mundu Lakini mundu juna



ashinkwapa matumaini gampya Ashipanganya ...

17

Mundu ujo aliji Nuhu. Alikoposhela kulubhelekluka seti. Nuhu paliji jwatenda ya kweli na jwangali mashambi. Ashimkoa na Ashipanganya.



18

Na kabhili ashinkwabhafundishaga ashibhanagwe bhatatu gwajogopa Ashipanganya. Alafu Ashipanganya bhanshikupanga kumtumila Nuhu katika njia ja maaajabu na jajikape.



19

Mwanzo gwa huzuni gu kabinadamu
Ngungukilo kutoka Ashipanganya, Biblia

Jinapatikana katika

Mwanzo 3-6

"Malobhe genu kutupa mwanga."
Zaburi 119: 130

20



Mwisho

2

60

21

Biblia jinataya malobhe gashi Ashipanganya,
ambaye bhaahikutuumba twamanye.

Ashipanganya bhaahikutumanya tunatenda Mambo gha shambi,
Nshahara gwa shambi ni kuwaa, Lakini Ashipanganya
bhanakutupinga Sana Bhashikumtuma mwana gwabho jwajika
Yesu kuwaa pa nshalaba kwa ajili ya shambi jako. Yesu
ashinkuyuka kwenda ku mbinguni! Mwanaga kuamini kukaa Yesu
na kunjuga nsamaha kwa ajili ya shambi shenu Ashipanganya
shibha nsamehe, shibhajie kutanamwe nkati jenu na
shintenanamenabho milele.

Mwanaga nkamini kwamba kwamini yenei ni kweli, ntaye
neyi kwa Shipanganya: Mwanaga nkamini kwamba,
Mwashipanganya na nchinkwaa pa Nsalaba kwa ajili ya
shambi shangu na Nzamehe shambi ili ngole maisha gampya
na lyubhalimo mmenamwe milele. Ndendeninjogope na ndame
ndu mwana gwenu. Amii.

Shoma Biblia na mmelekete na Ashipanganya kila siku!
Yohana 3:16

22